

Datasheet for ABIN2855471

**anti-IL-10RA antibody**[Go to Product page](#)**2** Images

## Overview

Quantity:	100 µL
Target:	IL-10RA (IL10RA)
Reactivity:	Human
Host:	Rabbit
Clonality:	Polyclonal
Conjugate:	This IL-10RA antibody is un-conjugated
Application:	Western Blotting (WB), Immunohistochemistry (Paraffin-embedded Sections) (IHC (p))

## Product Details

Immunogen:	Recombinant protein encompassing a sequence within the center region of human IL10 Receptor alpha. The exact sequence is proprietary.
Isotype:	IgG
Cross-Reactivity:	Human, Mouse
Characteristics:	Rabbit Polyclonal antibody to IL10 Receptor alpha (interleukin 10 receptor, alpha) IL10 Receptor alpha antibody
Purification:	Purified by antigen-affinity chromatography.

## Target Details

Target:	IL-10RA (IL10RA)
Alternative Name:	interleukin 10 receptor subunit alpha ( <a href="#">IL10RA Products</a> )

## Target Details

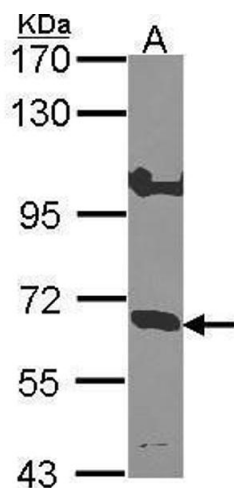
Background:	<p>The protein encoded by this gene is a receptor for interleukin 10. This protein is structurally related to interferon receptors. It has been shown to mediate the immunosuppressive signal of interleukin 10, and thus inhibits the synthesis of proinflammatory cytokines. This receptor is reported to promote survival of progenitor myeloid cells through the insulin receptor substrate-2/PI 3-kinase/AKT pathway. Activation of this receptor leads to tyrosine phosphorylation of JAK1 and TYK2 kinases. Two transcript variants, one protein-coding and the other not protein-coding, have been found for this gene.</p> <p>Cellular Localization: Membrane, Single-pass type I membrane protein</p>
Molecular Weight:	63 kDa
Gene ID:	3587
UniProt:	<a href="#">Q13651</a>
Pathways:	<a href="#">Growth Factor Binding</a>

## Application Details

Application Notes:	WB: 1:500-1:3000. IHC-P: 1:100-1:1000. Optimal dilutions/concentrations should be determined by the researcher. Not tested in other applications.
Comment:	Validation:Orthogonal, Overexpression
Restrictions:	For Research Use only

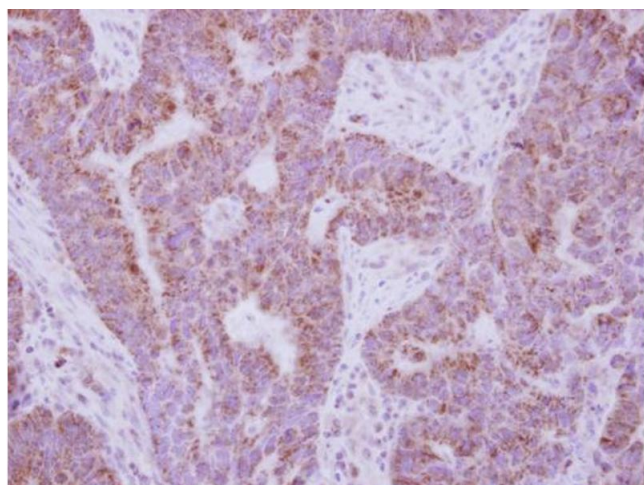
## Handling

Format:	Liquid
Concentration:	0.85 mg/mL
Buffer:	1XPBS ( pH 7), 20 % Glycerol, 0.025 % ProClin 300
Preservative:	ProClin
Precaution of Use:	This product contains ProClin: a POISONOUS AND HAZARDOUS SUBSTANCE which should be handled by trained staff only.
Storage:	4 °C,-20 °C
Storage Comment:	Store as concentrated solution. Centrifuge briefly prior to opening vial. For short-term storage (1-2 weeks), store at 4°C. For long-term storage, aliquot and store at -20°C or below. Avoid multiple freeze-thaw cycles.



#### Western Blotting

**Image 1.** WB Image Sample (30 ug of whole cell lysate) A: Hep G2 , 7.5% SDS PAGE IL-10R alpha antibody antibody diluted at 1:1000



#### Immunohistochemistry

**Image 2.** IHC-P Image Immunohistochemical analysis of paraffin-embedded human colon carcinoma, using IL10 Receptor alpha, antibody at 1:250 dilution.