



[Go to Product page](#)

Datasheet for ABIN2855472

anti-PNPLA4 antibody

2 Images

Overview

Quantity:	100 µL
Target:	PNPLA4
Reactivity:	Human
Host:	Rabbit
Clonality:	Polyclonal
Conjugate:	This PNPLA4 antibody is un-conjugated
Application:	Western Blotting (WB), Immunohistochemistry (Paraffin-embedded Sections) (IHC (p))

Product Details

Immunogen:	Recombinant protein encompassing a sequence within the center region of human GS2. The exact sequence is proprietary.
Isotype:	IgG
Cross-Reactivity:	Human
Characteristics:	Rabbit Polyclonal antibody to GS2 (patatin-like phospholipase domain containing 4) GS2 antibody
Purification:	Purified by antigen-affinity chromatography.

Target Details

Target:	PNPLA4
Alternative Name:	patatin like phospholipase domain containing 4 (PNPLA4 Products)

Target Details

Background: This gene encodes a member of the patatin-like family of phospholipases. The encoded enzyme has both triacylglycerol lipase and transacylase activities and may be involved in adipocyte triglyceride homeostasis. Alternate splicing results in multiple transcript variants. A pseudogene of this gene is found on chromosome Y.

Molecular Weight: 28 kDa

Gene ID: 8228

UniProt: [P41247](#)

Application Details

Application Notes: WB: 1:500-1:3000. IHC-P: 1:100-1:1000. Optimal dilutions/concentrations should be determined by the researcher. Not tested in other applications.

Comment: Positive Control: H1299

Restrictions: For Research Use only

Handling

Format: Liquid

Concentration: 0.98 mg/mL

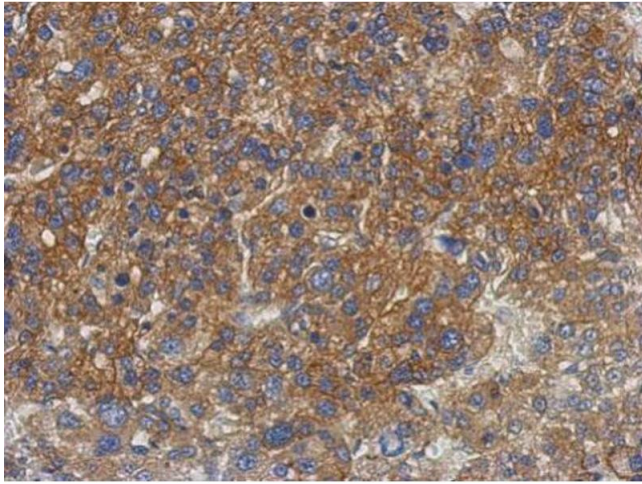
Buffer: 0.1M Tris-Glycine (pH 7), 20 % Glycerol, 0.01 % Thimerosal

Preservative: Thimerosal (Merthiolate)

Precaution of Use: This product contains Thimerosal (Merthiolate): a POISONOUS AND HAZARDOUS SUBSTANCE which should be handled by trained staff only.

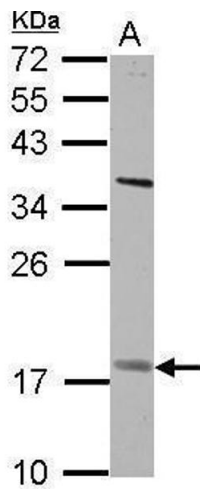
Storage: 4 °C,-20 °C

Storage Comment: Store as concentrated solution. Centrifuge briefly prior to opening vial. For short-term storage (1-2 weeks), store at 4°C. For long-term storage, aliquot and store at -20°C or below. Avoid multiple freeze-thaw cycles.



Immunohistochemistry

Image 1. IHC-P Image Immunohistochemical analysis of paraffin-embedded human hepatoma, using GS2, antibody at 1:500 dilution.



Western Blotting

Image 2. WB Image Sample (30 ug of whole cell lysate) A: H1299 12% SDS PAGE antibody diluted at 1:500