

Datasheet for ABIN2855474
anti-PLA2G1B antibody (Center)[Go to Product page](#)

1 Image

Overview

Quantity:	100 µL
Target:	PLA2G1B
Binding Specificity:	Center
Reactivity:	Human
Host:	Rabbit
Clonality:	Polyclonal
Conjugate:	This PLA2G1B antibody is un-conjugated
Application:	Western Blotting (WB)

Product Details

Immunogen:	Recombinant protein encompassing a sequence within the center region of human PLA2G1B. The exact sequence is proprietary.
Isotype:	IgG
Cross-Reactivity:	Mouse (Murine), Dog (Canine), Pig (Porcine), Rat (Rattus)
Cross-Reactivity (Details):	Mouse (80 %), Dog (88 %), Pig (83 %), Rat (80 %)
Characteristics:	Rabbit Polyclonal antibody to PLA2G1B (phospholipase A2, group IB (pancreas)) PLA2G1B antibody [N1C3]
Purification:	Purified by antigen-affinity chromatography.

Target Details

Target:	PLA2G1B
Alternative Name:	PLA2G1B (PLA2G1B Products)
Background:	<p>Phospholipase A2 (EC 3.1.1.4) catalyzes the release of fatty acids from glycerol-3-phosphocholines. The best known varieties are the digestive enzymes secreted as zymogens by the pancreas of mammals. Sequences of pancreatic PLA2 enzymes from a variety of mammals have been reported. One striking feature of these enzymes is their close homology to venom phospholipases of snakes. Other forms of PLA2 have been isolated from brain, liver, lung, spleen, intestine, macrophages, leukocytes, erythrocytes, inflammatory exudates, chondrocytes, and platelets (Seilhamer et al., 1986 [PubMed 3028739]) .[supplied by OMIM]</p> <p>Cellular Localization: Secreted</p>
Molecular Weight:	16 kDa
Gene ID:	5319
Pathways:	Inositol Metabolic Process , VEGF Signaling

Application Details

Application Notes:	<p>Suggested dilution Reference Western blot 1:500-1:3000* Not tested in other applications.</p> <p>*Optimal dilutions/concentrations should be determined by the researcher.Suggested dilutionReferenceWestern blot1:500-1:3000*</p>
Comment:	Positive Control: A549 , HeLa
Restrictions:	For Research Use only

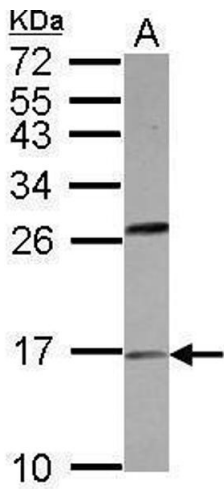
Handling

Format:	Liquid
Concentration:	0.74 mg/mL
Buffer:	0.1M Tris, 0.1M Glycine, 20 % Glycerol (pH 7). 0.01 % Thimerosal was added as a preservative.
Preservative:	Thimerosal (Merthiolate)
Precaution of Use:	This product contains Thimerosal (Merthiolate): a POISONOUS AND HAZARDOUS SUBSTANCE which should be handled by trained staff only.
Storage:	-20 °C

Handling

Storage Comment: Keep as concentrated solution. Aliquot and store at -20°C or below. Avoid multiple freeze-thaw cycles.

Images



Western Blotting

Image 1. WB Image Sample (30 ug of whole cell lysate) A:
HeLa 15% SDS PAGE antibody diluted at 1:500