



[Go to Product page](#)

Datasheet for ABIN2855476  
**anti-CYP4B1 antibody (Center)**

1 Image

Overview

Quantity:	100 µL
Target:	CYP4B1
Binding Specificity:	Center
Reactivity:	Human
Host:	Rabbit
Clonality:	Polyclonal
Conjugate:	This CYP4B1 antibody is un-conjugated
Application:	Western Blotting (WB)

Product Details

Immunogen:	Recombinant protein encompassing a sequence within the center region of human CYP4B1. The exact sequence is proprietary.
Isotype:	IgG
Cross-Reactivity:	Mouse (Murine), Rabbit, Rat (Rattus), Cow (Bovine)
Cross-Reactivity (Details):	Mouse (87 %), Rabbit (85 %), Rat (88 %), Bovine (83 %)
Characteristics:	Rabbit Polyclonal antibody to CYP4B1 (cytochrome P450, family 4, subfamily B, polypeptide 1) CYP4B1 antibody
Purification:	Purified by antigen-affinity chromatography.

## Target Details

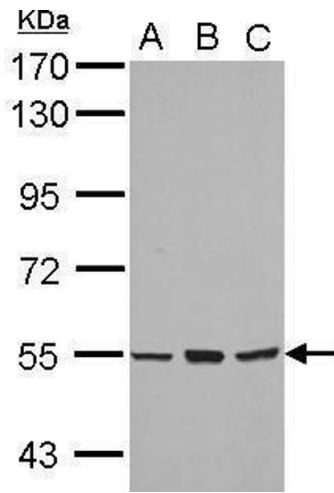
Target:	CYP4B1
Alternative Name:	CYP4B1 ( <a href="#">CYP4B1 Products</a> )
Background:	<p>This gene encodes a member of the cytochrome P450 superfamily of enzymes. The cytochrome P450 proteins are monooxygenases which catalyze many reactions involved in drug metabolism and synthesis of cholesterol, steroids and other lipids. This protein localizes to the endoplasmic reticulum. In rodents, the homologous protein has been shown to metabolize certain carcinogens, however, the specific function of the human protein has not been determined. Two transcript variants encoding slightly different isoforms have been found for this gene.</p> <p>Cellular Localization: Endoplasmic reticulum membrane , Microsome membrane</p>
Molecular Weight:	59 kDa
Gene ID:	1580

## Application Details

Application Notes:	<p>Suggested dilution Reference Western blot 1:1000-1:10000* Not tested in other applications. *Optimal dilutions/concentrations should be determined by the researcher.Suggested dilutionReferenceWestern blot1:1000-1:10000*</p>
Comment:	Positive Control: A549 , H1299 , MCF-7
Restrictions:	For Research Use only

## Handling

Format:	Liquid
Concentration:	1 mg/mL
Buffer:	1XPBS, 1 % BSA, 20 % Glycerol ( pH 7). 0.01 % Thimerosal was added as a preservative.
Preservative:	Thimerosal (Merthiolate)
Precaution of Use:	This product contains Thimerosal (Merthiolate): a POISONOUS AND HAZARDOUS SUBSTANCE which should be handled by trained staff only.
Storage:	-20 °C
Storage Comment:	Keep as concentrated solution. Aliquot and store at -20°C or below. Avoid multiple freeze-thaw cycles.



### Western Blotting

**Image 1.** WB Image Sample (30 ug of whole cell lysate) A: A549 B: H1299 C: MCF-7 7.5% SDS PAGE antibody diluted at 1:5000