

Datasheet for ABIN2855477

anti-Keratin 2 antibody**3** Images[Go to Product page](#)

Overview

Quantity:	100 µL
Target:	Keratin 2 (KRT2)
Reactivity:	Human
Host:	Rabbit
Clonality:	Polyclonal
Conjugate:	This Keratin 2 antibody is un-conjugated
Application:	Western Blotting (WB), Immunocytochemistry (ICC), Immunofluorescence (IF), Immunohistochemistry (Paraffin-embedded Sections) (IHC (p))

Product Details

Immunogen:	Recombinant protein encompassing a sequence within the center region of human Cytokeratin 2. The exact sequence is proprietary.
Isotype:	IgG
Cross-Reactivity:	Dog, Human
Characteristics:	Rabbit Polyclonal antibody to Cytokeratin 2 (keratin 2) Cytokeratin 2 antibody [N2C2], Internal
Purification:	Purified by antigen-affinity chromatography.

Target Details

Target:	Keratin 2 (KRT2)
Alternative Name:	keratin 2 (KRT2 Products)

Target Details

Background: The protein encoded by this gene is a member of the keratin gene family. The type II cytokeratins consist of basic or neutral proteins which are arranged in pairs of heterotypic keratin chains coexpressed during differentiation of simple and stratified epithelial tissues. This type II cytokeratin is expressed largely in the upper spinous layer of epidermal keratinocytes and mutations in this gene have been associated with bullous congenital ichthyosiform erythroderma. The type II cytokeratins are clustered in a region of chromosome 12q12-q13.

Molecular Weight: 65 kDa

Gene ID: 3849

UniProt: [P35908](#)

Application Details

Application Notes: WB: 1:500-1:3000. ICC/IF: 1:100-1:1000. IHC-P: 1:100-1:1000. Optimal dilutions/concentrations should be determined by the researcher. Not tested in other applications.

Comment: Positive Control: A431

Restrictions: For Research Use only

Handling

Format: Liquid

Concentration: 0.67 mg/mL

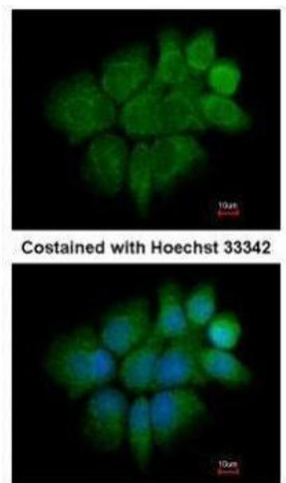
Buffer: 0.1M Tris-Glycine (pH 7), 10 % Glycerol, 0.01 % Thimerosal

Preservative: Thimerosal (Merthiolate)

Precaution of Use: This product contains Thimerosal (Merthiolate): a POISONOUS AND HAZARDOUS SUBSTANCE which should be handled by trained staff only.

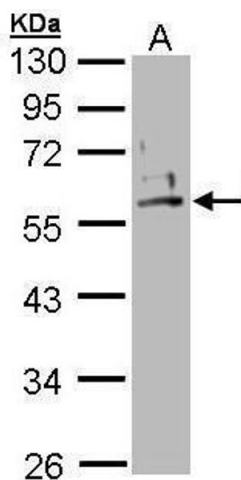
Storage: 4 °C, -20 °C

Storage Comment: Store as concentrated solution. Centrifuge briefly prior to opening vial. For short-term storage (1-2 weeks), store at 4°C. For long-term storage, aliquot and store at -20°C or below. Avoid multiple freeze-thaw cycles.



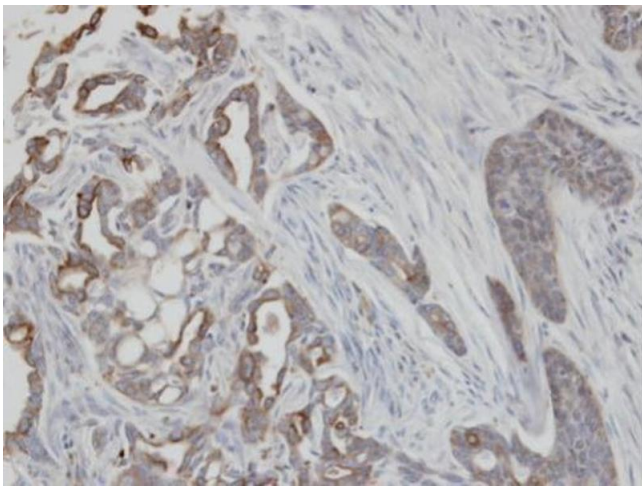
Immunofluorescence

Image 1. ICC/IF Image Immunofluorescence analysis of paraformaldehyde-fixed A431, using Cytokeratin 2, antibody at 1:200 dilution.



Western Blotting

Image 2. WB Image Sample (30 ug of whole cell lysate) A: A431 ,



Immunohistochemistry

Image 3. IHC-P Image Immunohistochemical analysis of paraffin-embedded H661 xenograft, using KRT2, antibody at 1:100 dilution.