

Datasheet for ABIN2855480

**anti-Biglycan antibody****2** Images[Go to Product page](#)

## Overview

Quantity:	100 µL
Target:	Biglycan (BGN)
Reactivity:	Human
Host:	Rabbit
Clonality:	Polyclonal
Conjugate:	This Biglycan antibody is un-conjugated
Application:	Western Blotting (WB), Immunohistochemistry (Paraffin-embedded Sections) (IHC (p))

## Product Details

Immunogen:	Recombinant protein encompassing a sequence within the center region of human Biglycan. The exact sequence is proprietary.
Isotype:	IgG
Cross-Reactivity:	Human
Characteristics:	Rabbit Polyclonal antibody to Biglycan (biglycan) Biglycan antibody
Purification:	Purified by antigen-affinity chromatography.

## Target Details

Target:	Biglycan (BGN)
Alternative Name:	biglycan ( <a href="#">BGN Products</a> )

## Target Details

**Background:** The protein encoded by this gene is a small cellular or pericellular matrix proteoglycan that is closely related in structure to two other small proteoglycans, decorin and fibromodulin. The encoded protein and decorin are thought to be the result of a gene duplication. Decorin contains one attached glycosaminoglycan chain, while this protein probably contains two chains. For this reason, this protein is called biglycan. This protein is thought to function in connective tissue metabolism by binding to collagen fibrils and transferring growth factor-beta. It may promote neuronal survival. This gene is a candidate gene for the Happle syndrome.

Cellular Localization: Secreted , extracellular space , extracellular matrix

**Molecular Weight:** 42 kDa

**Gene ID:** 633

**UniProt:** [P21810](#)

**Pathways:** [Glycosaminoglycan Metabolic Process](#)

## Application Details

**Application Notes:** WB: 1:500-1:3000. IHC-P: 1:100-1:1000. Optimal dilutions/concentrations should be determined by the researcher. Not tested in other applications.

**Comment:** Positive Control: 293T

**Restrictions:** For Research Use only

## Handling

**Format:** Liquid

**Concentration:** 0.27 mg/mL

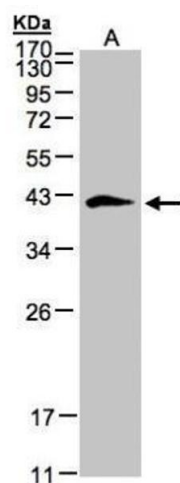
**Buffer:** 0.1M Tris-Glycine ( pH 7), 10 % Glycerol, 0.01 % Thimerosal

**Preservative:** Thimerosal (Merthiolate)

**Precaution of Use:** This product contains Thimerosal (Merthiolate): a POISONOUS AND HAZARDOUS SUBSTANCE which should be handled by trained staff only.

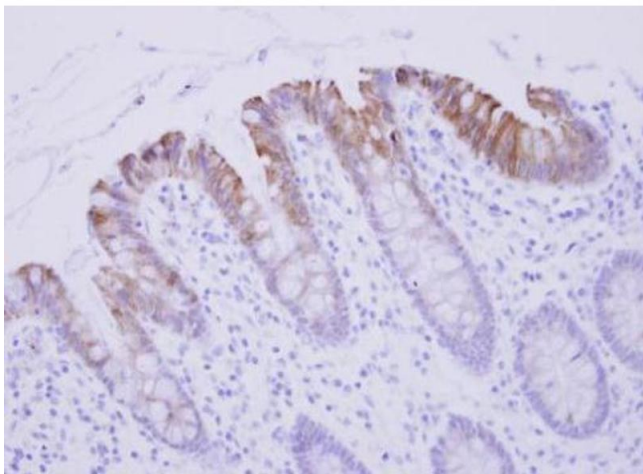
**Storage:** 4 °C, -20 °C

**Storage Comment:** Store as concentrated solution. Centrifuge briefly prior to opening vial. For short-term storage (1-2 weeks), store at 4°C. For long-term storage, aliquot and store at -20°C or below. Avoid multiple freeze-thaw cycles.



### Western Blotting

**Image 1.** WB Image Sample(30 ug whole cell lysate) A:293T  
12% SDS PAGE antibody diluted at 1:500



### Immunohistochemistry

**Image 2.** IHC-P Image Biglycan antibody detects BGN protein at cytosol on human Colon Epithelium by immunohistochemical analysis. Sample: Paraffin-embedded Colon Epithelium. Biglycan antibody , dilution: 1:250.