

Datasheet for ABIN2855483
anti-DDX6 antibody (Center)

3 Images

[Go to Product page](#)

Overview

Quantity:	100 µL
Target:	DDX6
Binding Specificity:	Center
Reactivity:	Human, Mouse
Host:	Rabbit
Clonality:	Polyclonal
Conjugate:	This DDX6 antibody is un-conjugated
Application:	Western Blotting (WB), Immunohistochemistry (Paraffin-embedded Sections) (IHC (p)), Immunofluorescence (IF), Immunocytochemistry (ICC)

Product Details

Immunogen:	Recombinant protein encompassing a sequence within the center region of human DDX6. The exact sequence is proprietary.
Isotype:	IgG
Cross-Reactivity:	Cow (Bovine)
Cross-Reactivity (Details):	Bovine (100 %)
Characteristics:	Rabbit Polyclonal antibody to DDX6 (DEAD (Asp-Glu-Ala-Asp) box polypeptide 6) DDX6 antibody
Purification:	Purified by antigen-affinity chromatography.

Target Details

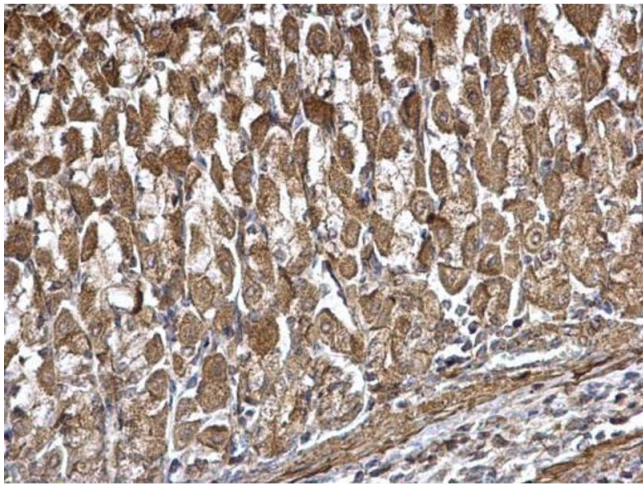
Target:	DDX6
Alternative Name:	DDX6 (DDX6 Products)
Background:	<p>This gene encodes a member of the DEAD box protein family. The protein is an RNA helicase found in P-bodies and stress granules, and functions in translation suppression and mRNA degradation. It is required for microRNA-induced gene silencing.</p> <p>Cellular Localization: Cytoplasm , P-body</p>
Molecular Weight:	54 kDa
Gene ID:	1656
Pathways:	Ribonucleoprotein Complex Subunit Organization

Application Details

Application Notes:	<p>Suggested dilution Reference ICC/IF 1:100-1:1000* IHC (Formalin-fixed paraffin-embedded sections) 1:100-1:1000* Western blot 1:500-1:3000* Not tested in other applications. *Optimal dilutions/concentrations should be determined by the researcher.Suggested dilutionReferenceICC/IF1:100-1:1000* IHC (Formalin-fixed paraffin-embedded sections)1:100-1:1000* Western blot1:500-1:3000*</p>
Comment:	Positive Control: HeLa
Restrictions:	For Research Use only

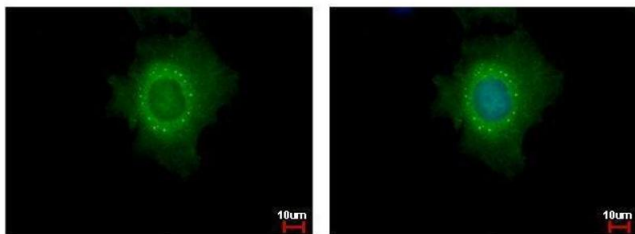
Handling

Format:	Liquid
Concentration:	0.708 mg/mL
Buffer:	1XPBS, 10 % Glycerol (pH 7). 0.01 % Thimerosal was added as a preservative.
Preservative:	Thimerosal (Merthiolate)
Precaution of Use:	This product contains Thimerosal (Merthiolate): a POISONOUS AND HAZARDOUS SUBSTANCE which should be handled by trained staff only.
Storage:	-20 °C
Storage Comment:	Keep as concentrated solution. Aliquot and store at -20°C or below. Avoid multiple freeze-thaw cycles.



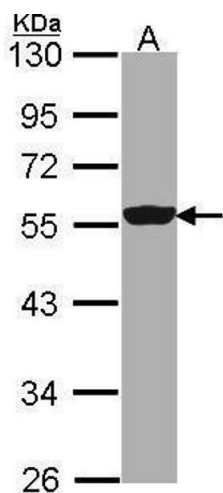
Immunohistochemistry

Image 1. IHC-P Image DDX6 antibody detects DDX6 protein at cytoplasm on mouse stomach by immunohistochemical analysis. Sample: Paraffin-embedded mouse stomach. DDX6 antibody , diluted at 1:500.



Immunofluorescence

Image 2. ICC/IF Image DDX6 antibody detects DDX6 protein at cytoplasm and P body by immunofluorescent analysis. Sample: HeLa cells were fixed in 4% paraformaldehyde at RT for 15 min. Green: DDX6 protein stained by DDX6 antibody , diluted at 1:500. Blue: Hoechst 33342 staining.



Western Blotting

Image 3. WB Image Sample (30 ug of whole cell lysate) A: HeLa 10% SDS PAGE DDX6 antibody antibody diluted at 1:1000