



Datasheet for ABIN2855485

## anti-ISL1 antibody



[Go to Product page](#)

### 3 Images

#### Overview

Quantity:	100 µL
Target:	ISL1
Reactivity:	Human
Host:	Rabbit
Clonality:	Polyclonal
Conjugate:	This ISL1 antibody is un-conjugated
Application:	Western Blotting (WB), Immunofluorescence (IF), Immunohistochemistry (Paraffin-embedded Sections) (IHC (p)), Immunocytochemistry (ICC), Immunohistochemistry (Frozen Sections) (IHC (fro)), Immunohistochemistry (Whole Mount) (IHC (wm))

#### Product Details

Immunogen:	Recombinant protein encompassing a sequence within the center region of human Islet 1. The exact sequence is proprietary.
Isotype:	IgG
Cross-Reactivity:	Human, Mouse, Rat, Zebrafish (Danio rerio)
Characteristics:	Rabbit Polyclonal antibody to Islet 1 (ISL LIM homeobox 1) Islet 1 antibody
Purification:	Purified by antigen-affinity chromatography.

#### Target Details

Target:	ISL1
---------	------

## Target Details

---

Alternative Name:	ISL LIM homeobox 1 ( <a href="#">ISL1 Products</a> )
Background:	<p>This gene encodes a member of the LIM/homeodomain family of transcription factors. The encoded protein binds to the enhancer region of the insulin gene, among others, and may play an important role in regulating insulin gene expression. The encoded protein is central to the development of pancreatic cell lineages and may also be required for motor neuron generation. Mutations in this gene have been associated with maturity-onset diabetes of the young.</p> <p>Cellular Localization: Nucleus</p>
Molecular Weight:	39 kDa
Gene ID:	3670
UniProt:	<a href="#">P61371</a>
Pathways:	<a href="#">Positive Regulation of Peptide Hormone Secretion</a> , <a href="#">Intracellular Steroid Hormone Receptor Signaling Pathway</a> , <a href="#">Peptide Hormone Metabolism</a> , <a href="#">Regulation of Intracellular Steroid Hormone Receptor Signaling</a> , <a href="#">Nuclear Hormone Receptor Binding</a> , <a href="#">Chromatin Binding</a>

## Application Details

---

Application Notes:	WB: 1:5000-1:20000. ICC/IF: 1:100-1:1000. IHC-P: 1:100-1:1000. IHC-Fr: 1:100-1:1000. Optimal dilutions/concentrations should be determined by the researcher. Not tested in other applications.
Comment:	Positive Control: PC-12 Validation: Orthogonal
Restrictions:	For Research Use only

## Handling

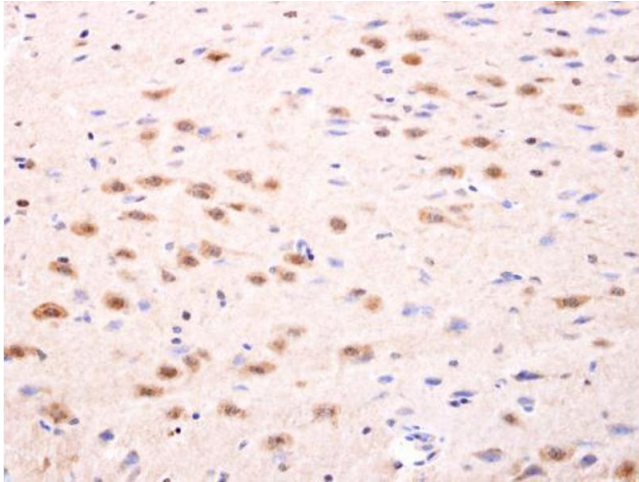
---

Format:	Liquid
Concentration:	0.55 mg/mL
Buffer:	1XPBS ( pH 7), 20 % Glycerol, 0.025 % ProClin 300
Preservative:	ProClin
Precaution of Use:	This product contains ProClin: a POISONOUS AND HAZARDOUS SUBSTANCE which should be handled by trained staff only.
Storage:	4 °C,-20 °C

## Handling

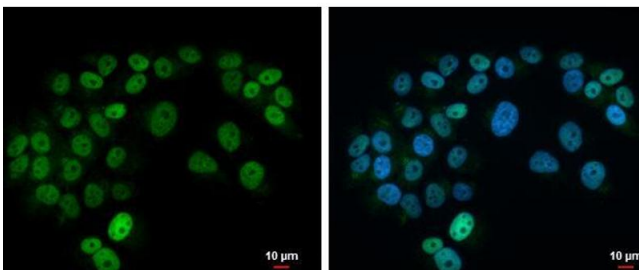
Storage Comment: Store as concentrated solution. Centrifuge briefly prior to opening vial. For short-term storage (1-2 weeks), store at 4°C. For long-term storage, aliquot and store at -20°C or below. Avoid multiple freeze-thaw cycles.

## Images



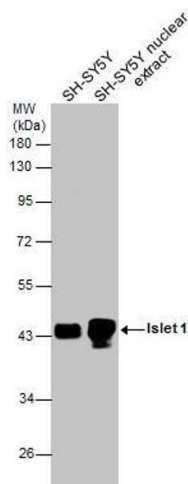
### Immunohistochemistry

**Image 1.** IHC-P Image Islet 1 antibody detects Islet 1 protein at nucleus on rat fore brain by immunohistochemical analysis. Sample: Paraffin-embedded rat fore brain. Islet 1 antibody , dilution: 1:100.



### Immunofluorescence

**Image 2.** ICC/IF Image Islet 1 antibody detects Islet 1 protein at nucleus by immunofluorescent analysis. Sample: SK-N-AS cells were fixed in 4% paraformaldehyde at RT for 15 min. Green: Islet 1 protein stained by Islet 1 antibody , diluted at 1:500. Blue: Hoechst 33342 staining. Scale bar = 10 µm.



### Western Blotting

**Image 3.** WB Image SH-SY5Y whole cell and nuclear extracts (30 µg) were separated by 10% SDS-PAGE, and the membrane was blotted with Islet 1 antibody , diluted at 1:10000.