

Datasheet for ABIN2855489  
**anti-IMPDH1 antibody (Center)**[Go to Product page](#)

## 1 Image

## Overview

Quantity:	100 µL
Target:	IMPDH1
Binding Specificity:	Center
Reactivity:	Human
Host:	Rabbit
Clonality:	Polyclonal
Conjugate:	This IMPDH1 antibody is un-conjugated
Application:	Western Blotting (WB)

## Product Details

Immunogen:	Recombinant protein encompassing a sequence within the center region of human IMPDH1. The exact sequence is proprietary.
Isotype:	IgG
Cross-Reactivity:	Mouse (Murine), Rat (Rattus), Xenopus laevis, Cow (Bovine), Xenopus tropicalis
Cross-Reactivity (Details):	Mouse (95 %), Rat (82 %), Xenopus laevis (88 %), Bovine (97 %), Xenopus tropicalis (89 %)
Characteristics:	Rabbit polyclonal antibody to IMP dehydrogenase 1 (IMP (inosine monophosphate) dehydrogenase 1) IMPDH1 antibody [N1C1]
Purification:	Purified by antigen-affinity chromatography.

## Target Details

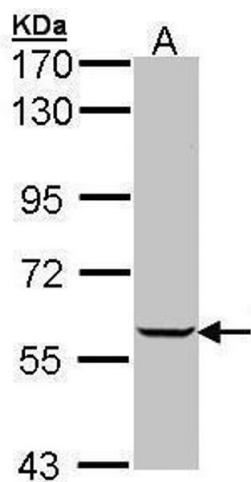
Target:	IMPDH1
Alternative Name:	IMP Dehydrogenase 1 ( <a href="#">IMPDH1 Products</a> )
Background:	The protein encoded by this gene acts as a homotetramer to regulate cell growth. The encoded protein is an enzyme that catalyzes the synthesis of xanthine monophosphate (XMP) from inosine-5'-monophosphate (IMP). This is the rate-limiting step in the de novo synthesis of guanine nucleotides. Defects in this gene are a cause of retinitis pigmentosa type 10 (RP10). Several transcript variants encoding different isoforms have been found for this gene.
Molecular Weight:	55 kDa
Gene ID:	3614
Pathways:	<a href="#">Ribonucleoside Biosynthetic Process</a>

## Application Details

Application Notes:	Suggested dilution Reference Western blot 1:500-1:3000* Not tested in other applications. *Optimal dilutions/concentrations should be determined by the researcher.Suggested dilutionReferenceWestern blot1:500-1:3000*
Comment:	Positive Control: 293T , A431 , H1299 , HeLa , HepG2 , Molt-4 , Raji
Restrictions:	For Research Use only

## Handling

Format:	Liquid
Concentration:	1 mg/mL
Buffer:	0.1M Tris, 0.1M Glycine, 10 % Glycerol ( pH 7). 0.01 % Thimerosal was added as a preservative.
Preservative:	Thimerosal (Merthiolate)
Precaution of Use:	This product contains Thimerosal (Merthiolate): a POISONOUS AND HAZARDOUS SUBSTANCE which should be handled by trained staff only.
Storage:	-20 °C
Storage Comment:	Keep as concentrated solution. Aliquot and store at -20°C or below. Avoid multiple freeze-thaw cycles.



Western Blotting

**Image 1.** WB Image Sample (30 ug of whole cell lysate) A:  
Raji 7.5% SDS PAGE antibody diluted at 1:1000