

Datasheet for ABIN2855490

anti-NEK4 antibody

3 Images

[Go to Product page](#)

Overview

Quantity:	100 µL
Target:	NEK4
Reactivity:	Human
Host:	Rabbit
Clonality:	Polyclonal
Conjugate:	This NEK4 antibody is un-conjugated
Application:	Western Blotting (WB), Immunohistochemistry (Paraffin-embedded Sections) (IHC (p)), Immunofluorescence (IF), Immunocytochemistry (ICC)

Product Details

Immunogen:	Recombinant protein encompassing a sequence within the center region of human NEK4. The exact sequence is proprietary.
Isotype:	IgG
Cross-Reactivity:	Human
Characteristics:	Rabbit Polyclonal antibody to NEK4 (NIMA (never in mitosis gene a)-related kinase 4) NEK4 antibody [N2C1], Internal
Purification:	Purified by antigen-affinity chromatography.

Target Details

Target:	NEK4
Alternative Name:	NIMA related kinase 4 (NEK4 Products)

Target Details

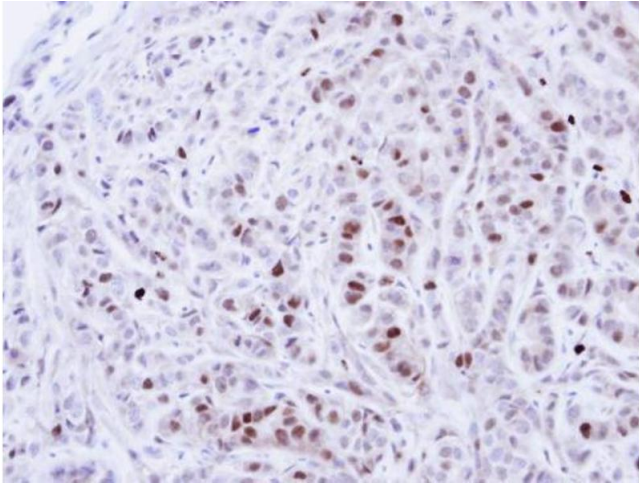
Background:	Cellular Localization: Nucleus
Molecular Weight:	95 kDa
Gene ID:	6787
UniProt:	P51957

Application Details

Application Notes:	WB: 1:500-1:3000. ICC/IF: 1:100-1:1000. IHC-P: 1:100-1:1000. Optimal dilutions/concentrations should be determined by the researcher. Not tested in other applications.
Comment:	Positive Control: A431 , H1299 , U87-MG , SK-N-SH , IMR32 , SK-N-AS
Restrictions:	For Research Use only

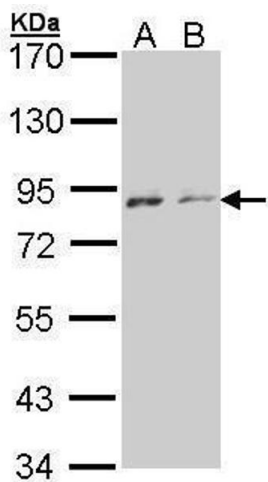
Handling

Format:	Liquid
Concentration:	0.37 mg/mL
Buffer:	0.1M Tris-Glycine (pH 7), 10 % Glycerol, 0.01 % Thimerosal
Preservative:	Thimerosal (Merthiolate)
Precaution of Use:	This product contains Thimerosal (Merthiolate): a POISONOUS AND HAZARDOUS SUBSTANCE which should be handled by trained staff only.
Storage:	4 °C,-20 °C
Storage Comment:	Store as concentrated solution. Centrifuge briefly prior to opening vial. For short-term storage (1-2 weeks), store at 4°C. For long-term storage, aliquot and store at -20°C or below. Avoid multiple freeze-thaw cycles.



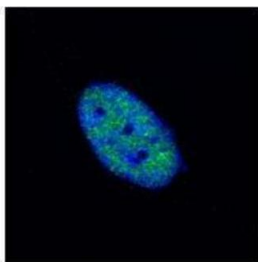
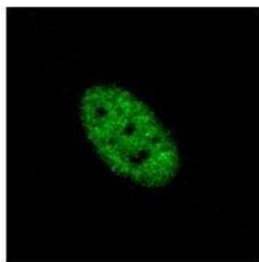
Immunohistochemistry

Image 1. IHC-P Image Immunohistochemical analysis of paraffin-embedded A549 Xenograft, using NEK4, antibody at 1:100 dilution.



Western Blotting

Image 2. WB Image Sample (30 ug of whole cell lysate) A: A431 , B: H1299 7.5% SDS PAGE antibody diluted at 1:1000



Immunofluorescence

Image 3. ICC/IF Image NEK4 antibody [N2C1], Internal detects NEK4 protein at nucleus by confocal immunofluorescent analysis. Sample: HeLa cells were fixed in ice-cold MeOH for 15 min. Green: NEK4 protein stained by NEK4 antibody [N2C1], Internal , diluted at 1:500. Blue: Hoechst 33343 staining. [Images captured by Olympus FV10i Confocal Laser Scanning Microscope]