

Datasheet for ABIN2855491
anti-GABPA antibody (N-Term)



[Go to Product page](#)

1 Image

Overview

| | |
|----------------------|--------------------------------------|
| Quantity: | 100 µL |
| Target: | GABPA |
| Binding Specificity: | N-Term |
| Reactivity: | Human |
| Host: | Rabbit |
| Clonality: | Polyclonal |
| Conjugate: | This GABPA antibody is un-conjugated |
| Application: | Western Blotting (WB) |

Product Details

| | |
|-----------------------------|---|
| Immunogen: | Recombinant protein encompassing a sequence within the N-terminus region of human GABPA. The exact sequence is proprietary. |
| Isotype: | IgG |
| Cross-Reactivity: | Mouse (Murine), Chicken, Rat (Rattus), Cow (Bovine), Xenopus tropicalis |
| Cross-Reactivity (Details): | Mouse (95 %), Chicken (87 %), Rat (96 %), Bovine (98 %), Xenopus tropicalis (86 %) |
| Characteristics: | Rabbit Polyclonal antibody to GABPA (GA binding protein transcription factor, alpha subunit 60 kDa) GABPA antibody |
| Purification: | Purified by antigen-affinity chromatography. |

Target Details

| | |
|-------------------|--|
| Target: | GABPA |
| Alternative Name: | GABPA (GABPA Products) |
| Background: | <p>This gene encodes one of three GA-binding protein transcription factor subunits which functions as a DNA-binding subunit. Since this subunit shares identity with a subunit encoding the nuclear respiratory factor 2 gene, it is likely involved in activation of cytochrome oxidase expression and nuclear control of mitochondrial function. This subunit also shares identity with a subunit constituting the transcription factor E4TF1, responsible for expression of the adenovirus E4 gene. Because of its chromosomal localization and ability to form heterodimers with other polypeptides, this gene may play a role in the Down Syndrome phenotype.</p> <p>Cellular Localization: Nucleus</p> |
| Molecular Weight: | 51 kDa |
| Gene ID: | 2551 |
| Pathways: | Myometrial Relaxation and Contraction |

Application Details

| | |
|--------------------|---|
| Application Notes: | <p>Suggested dilution Reference Western blot 1:500-1:3000* Not tested in other applications.</p> <p>*Optimal dilutions/concentrations should be determined by the researcher.Suggested dilutionReferenceWestern blot1:500-1:3000*</p> |
| Comment: | Positive Control: Raji , K562 |
| Restrictions: | For Research Use only |

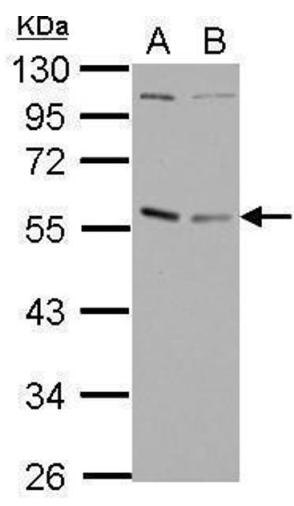
Handling

| | |
|--------------------|--|
| Format: | Liquid |
| Concentration: | 1.02 mg/mL |
| Buffer: | 0.1M Tris, 0.1M Glycine, 20 % Glycerol (pH 7). 0.01 % Thimerosal was added as a preservative. |
| Preservative: | Thimerosal (Merthiolate) |
| Precaution of Use: | This product contains Thimerosal (Merthiolate): a POISONOUS AND HAZARDOUS SUBSTANCE which should be handled by trained staff only. |
| Storage: | -20 °C |

Handling

Storage Comment: Keep as concentrated solution. Aliquot and store at -20°C or below. Avoid multiple freeze-thaw cycles.

Images



Western Blotting

Image 1. WB Image Sample (30 ug of whole cell lysate) A: Raji B: K562 10% SDS PAGE antibody diluted at 1:1000