

Datasheet for ABIN2855493
anti-AF9 antibody (Center)

3 Images

[Go to Product page](#)

Overview

Quantity:	100 µL
Target:	AF9 (MLLT3)
Binding Specificity:	Center
Reactivity:	Human
Host:	Rabbit
Clonality:	Polyclonal
Conjugate:	This AF9 antibody is un-conjugated
Application:	Western Blotting (WB), Immunohistochemistry (Paraffin-embedded Sections) (IHC (p)), Immunofluorescence (IF), Chromatin Immunoprecipitation (ChIP), Immunocytochemistry (ICC)

Product Details

Immunogen:	Recombinant protein encompassing a sequence within the center region of human AF9. The exact sequence is proprietary.
Isotype:	IgG
Characteristics:	Rabbit Polyclonal antibody to AF9 (myeloid/lymphoid or mixed-lineage leukemia (trithorax homolog, Drosophila), translocated to, 3) AF9 antibody
Purification:	Purified by antigen-affinity chromatography.

Target Details

Target:	AF9 (MLLT3)
---------	-------------

Target Details

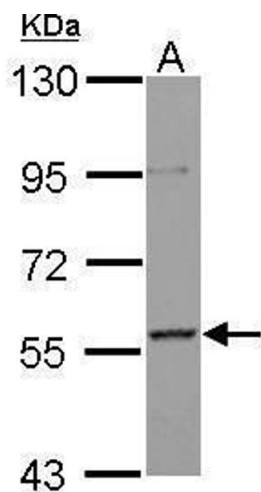
Alternative Name:	AF9 (MLLT3 Products)
Background:	Cellular Localization: Nucleus
Molecular Weight:	63 kDa
Gene ID:	4300

Application Details

Application Notes:	Suggested dilution Reference ChIP assay Assay-dependent dilution ICC/IF 1:100-1:1000* IHC (Formalin-fixed paraffin-embedded sections) 1:100-1:1000* Western blot 1:500-1:3000* Not tested in other applications. *Optimal dilutions/concentrations should be determined by the researcher.Suggested dilutionReferenceChIP assayAssay-dependent dilution ICC/IF1:100-1:1000* IHC (Formalin-fixed paraffin-embedded sections)1:100-1:1000* Western blot1:500-1:3000*
Comment:	Positive Control: THP-1 , *SEM-K2 ,
Restrictions:	For Research Use only

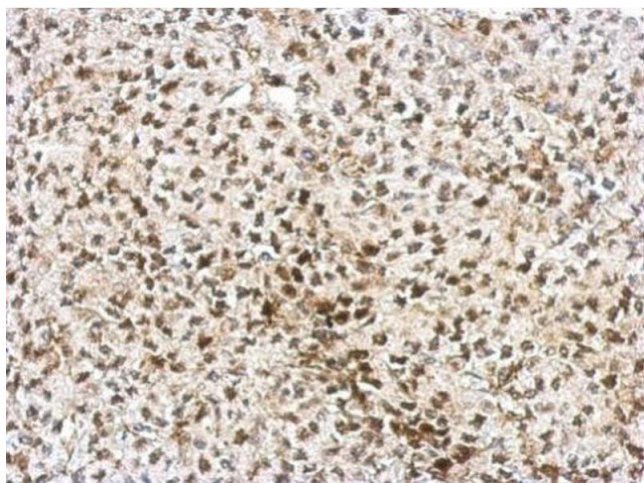
Handling

Format:	Liquid
Concentration:	0.99 mg/mL
Buffer:	1XPBS, 20 % Glycerol (pH 7). 0.01 % Thimerosal was added as a preservative.
Preservative:	Thimerosal (Merthiolate)
Precaution of Use:	This product contains Thimerosal (Merthiolate): a POISONOUS AND HAZARDOUS SUBSTANCE which should be handled by trained staff only.
Storage:	-20 °C
Storage Comment:	Keep as concentrated solution. Aliquot and store at -20°C or below. Avoid multiple freeze-thaw cycles.



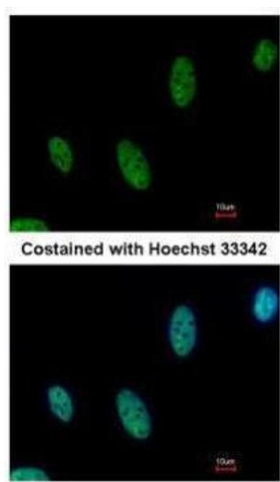
Western Blotting

Image 1. WB Image Sample (30 ug of whole cell lysate) A: THP-1 7.5% SDS PAGE antibody diluted at 1:1000



Immunohistochemistry

Image 2. IHC-P Image Immunohistochemical analysis of paraffin-embedded D54 xenograft, using AF9, antibody at 1:750 dilution.



Immunofluorescence

Image 3. ICC/IF Image Immunofluorescence analysis of paraformaldehyde-fixed HeLa, using AF9, antibody at 1:500 dilution.