

Datasheet for ABIN2855494
anti-ENPEP antibody (C-Term)[Go to Product page](#)

2 Images

Overview

Quantity:	100 µL
Target:	ENPEP
Binding Specificity:	C-Term
Reactivity:	Human
Host:	Rabbit
Clonality:	Polyclonal
Conjugate:	This ENPEP antibody is un-conjugated
Application:	Western Blotting (WB), Immunohistochemistry (Paraffin-embedded Sections) (IHC (p))

Product Details

Immunogen:	Recombinant protein encompassing a sequence within the C-terminus region of human Aminopeptidase A. The exact sequence is proprietary.
Isotype:	IgG
Cross-Reactivity:	Human, Mouse
Characteristics:	Rabbit Polyclonal antibody to Glutamyl aminopeptidase (glutamyl aminopeptidase (aminopeptidase A)) Glutamyl aminopeptidase antibody [C2C3], C-term
Purification:	Purified by antigen-affinity chromatography.

Target Details

Target:	ENPEP
---------	-------

Target Details

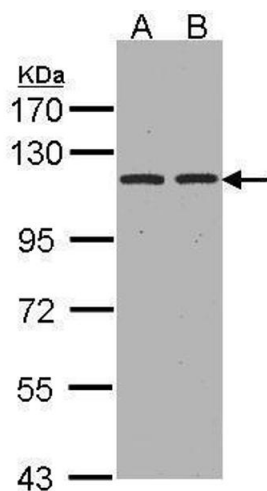
Alternative Name:	glutamyl aminopeptidase (ENPEP Products)
Background:	Appears to have a role in the catabolic pathway of the renin-angiotensin system. Probably plays a role in regulating growth and differentiation of early B-lineage cells.
	Cellular Localization: Membrane
Molecular Weight:	109 kDa
Gene ID:	2028
UniProt:	Q07075
Pathways:	Peptide Hormone Metabolism , Regulation of Systemic Arterial Blood Pressure by Hormones

Application Details

Application Notes:	WB: 1:500-1:3000. IHC-P: 1:100-1:1000. Optimal dilutions/concentrations should be determined by the researcher. Not tested in other applications.
Comment:	Positive Control: HeLaS3 , HepG2
Restrictions:	For Research Use only

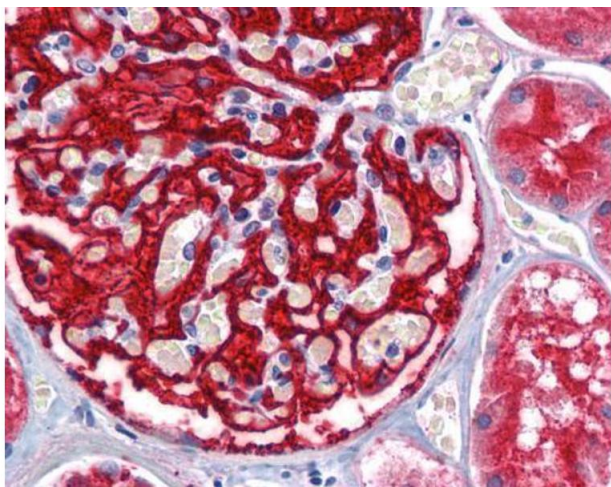
Handling

Format:	Liquid
Concentration:	1 mg/mL
Buffer:	0.1M Tris-Glycine (pH 7), 10 % Glycerol, 0.01 % Thimerosal
Preservative:	Thimerosal (Merthiolate)
Precaution of Use:	This product contains Thimerosal (Merthiolate): a POISONOUS AND HAZARDOUS SUBSTANCE which should be handled by trained staff only.
Storage:	4 °C, -20 °C
Storage Comment:	Store as concentrated solution. Centrifuge briefly prior to opening vial. For short-term storage (1-2 weeks), store at 4°C. For long-term storage, aliquot and store at -20°C or below. Avoid multiple freeze-thaw cycles.



Western Blotting

Image 1. WB Image Sample(30 ug whole cell lysate) A:Hep G2 , B:HeLa S3, 7.5% SDS PAGE antibody diluted at 1:1000



Immunohistochemistry

Image 2. IHC-P Image Immunohistochemical analysis of paraffin-embedded human Kidney, using Glutaryl aminopeptidase, antibody(10 µg/ml).