



[Go to Product page](#)

Datasheet for ABIN2855496

## anti-PDE4B antibody

### 1 Image

#### Overview

Quantity:	100 µL
Target:	PDE4B
Reactivity:	Human
Host:	Rabbit
Clonality:	Polyclonal
Conjugate:	This PDE4B antibody is un-conjugated
Application:	Immunofluorescence (IF), Immunocytochemistry (ICC)

#### Product Details

Immunogen:	Recombinant protein encompassing a sequence within the center region of human PDE4B. The exact sequence is proprietary.
Isotype:	IgG
Cross-Reactivity:	Human
Characteristics:	Rabbit Polyclonal antibody to PDE4B (phosphodiesterase 4B, cAMP-specific) PDE4B antibody
Purification:	Purified by antigen-affinity chromatography.

#### Target Details

Target:	PDE4B
Alternative Name:	phosphodiesterase 4B ( <a href="#">PDE4B Products</a> )

## Target Details

---

**Background:** This gene is a member of the type IV, cyclic AMP (cAMP)-specific, cyclic nucleotide phosphodiesterase (PDE) family. Cyclic nucleotides are important second messengers that regulate and mediate a number of cellular responses to extracellular signals, such as hormones, light, and neurotransmitters. The cyclic nucleotide phosphodiesterases (PDEs) regulate the cellular concentrations of cyclic nucleotides and thereby play a role in signal transduction. This gene encodes a protein that specifically hydrolyzes cAMP. Altered activity of this protein has been associated with schizophrenia and bipolar affective disorder. Alternate transcriptional splice variants, encoding different isoforms, have been characterized.

---

**Molecular Weight:** 83 kDa

---

**Gene ID:** 5142

---

**UniProt:** [Q07343](#)

---

**Pathways:** [Cellular Response to Molecule of Bacterial Origin](#), [cAMP Metabolic Process](#), [Myometrial Relaxation and Contraction](#)

## Application Details

---

**Application Notes:** ICC/IF: 1:100-1:1000. Optimal dilutions/concentrations should be determined by the researcher. Not tested in other applications.

---

**Restrictions:** For Research Use only

## Handling

---

**Format:** Liquid

---

**Concentration:** 1 mg/mL

---

**Buffer:** 1XPBS ( pH 7), 20 % Glycerol, 0.01 % Thimerosal

---

**Preservative:** Thimerosal (Merthiolate)

---

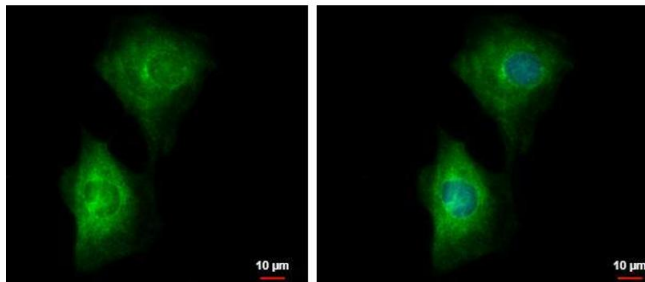
**Precaution of Use:** This product contains Thimerosal (Merthiolate): a POISONOUS AND HAZARDOUS SUBSTANCE which should be handled by trained staff only.

---

**Storage:** 4 °C, -20 °C

---

**Storage Comment:** Store as concentrated solution. Centrifuge briefly prior to opening vial. For short-term storage (1-2 weeks), store at 4°C. For long-term storage, aliquot and store at -20°C or below. Avoid multiple freeze-thaw cycles.



### Immunofluorescence

**Image 1.** ICC/IF Image PDE4B antibody detects PDE4B protein at cytoplasm by immunofluorescent analysis. Sample: SKNSH cells were fixed in 4% paraformaldehyde at RT for 15 min. Green: PDE4B protein stained by PDE4B antibody, diluted at 1:500. Blue: Hoechst 33342 staining.