

Datasheet for ABIN2855498
anti-PDE4B antibody (C-Term)



[Go to Product page](#)

2 Images

Overview

Quantity:	100 µL
Target:	PDE4B
Binding Specificity:	C-Term
Reactivity:	Human
Host:	Rabbit
Clonality:	Polyclonal
Conjugate:	This PDE4B antibody is un-conjugated
Application:	Western Blotting (WB)

Product Details

Immunogen:	Recombinant protein encompassing a sequence within the C-terminus region of human PDE4B. The exact sequence is proprietary.
Isotype:	IgG
Cross-Reactivity:	Human
Characteristics:	Rabbit Polyclonal antibody to PDE4B (phosphodiesterase 4B, cAMP-specific) PDE4B antibody
Purification:	Purified by antigen-affinity chromatography.

Target Details

Target:	PDE4B
---------	-------

Target Details

Alternative Name:	phosphodiesterase 4B (PDE4B Products)
Background:	This gene is a member of the type IV, cyclic AMP (cAMP)-specific, cyclic nucleotide phosphodiesterase (PDE) family. Cyclic nucleotides are important second messengers that regulate and mediate a number of cellular responses to extracellular signals, such as hormones, light, and neurotransmitters. The cyclic nucleotide phosphodiesterases (PDEs) regulate the cellular concentrations of cyclic nucleotides and thereby play a role in signal transduction. This gene encodes a protein that specifically hydrolyzes cAMP. Altered activity of this protein has been associated with schizophrenia and bipolar affective disorder. Alternate transcriptional splice variants, encoding different isoforms, have been characterized.
Molecular Weight:	83 kDa
Gene ID:	5142
UniProt:	Q07343
Pathways:	Cellular Response to Molecule of Bacterial Origin , cAMP Metabolic Process , Myometrial Relaxation and Contraction

Application Details

Application Notes:	WB: 1:500-1:3000. Optimal dilutions/concentrations should be determined by the researcher. Not tested in other applications.
Comment:	Positive Control: NT2D1 , PC-3 , HCT116
Restrictions:	For Research Use only

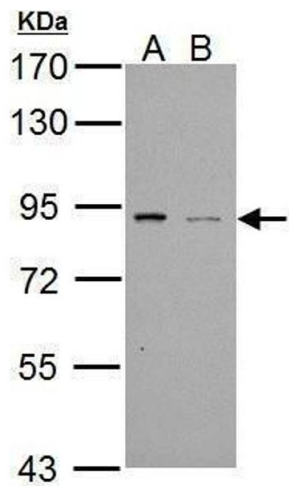
Handling

Format:	Liquid
Concentration:	0.72 mg/mL
Buffer:	1XPBS (pH 7), 10 % Glycerol, 0.01 % Thimerosal
Preservative:	Thimerosal (Merthiolate)
Precaution of Use:	This product contains Thimerosal (Merthiolate): a POISONOUS AND HAZARDOUS SUBSTANCE which should be handled by trained staff only.
Storage:	4 °C,-20 °C

Handling

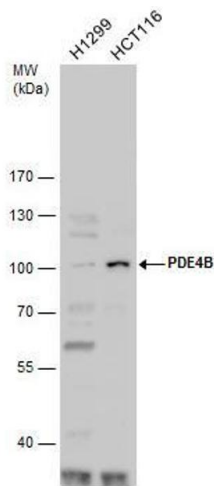
Storage Comment: Store as concentrated solution. Centrifuge briefly prior to opening vial. For short-term storage (1-2 weeks), store at 4°C. For long-term storage, aliquot and store at -20°C or below. Avoid multiple freeze-thaw cycles.

Images



Western Blotting

Image 1. WB Image Sample (30 ug of whole cell lysate) A: NT2D1 B: PC-3 7.5% SDS PAGE antibody diluted at 1:1000



Western Blotting

Image 2. WB Image PDE4B antibody detects PDE4B protein by western blot analysis. Whole cell extracts (30 µg) was separated by 7.5% SDS-PAGE, and the membrane was blotted with PDE4B antibody , diluted by 1:1000.