

Datasheet for ABIN2855499

anti-PTER antibody

3 Images

1 Publication

[Go to Product page](#)

Overview

Quantity:	100 µL
Target:	PTER
Reactivity:	Human
Host:	Rabbit
Clonality:	Polyclonal
Conjugate:	This PTER antibody is un-conjugated
Application:	Western Blotting (WB), Immunohistochemistry (Paraffin-embedded Sections) (IHC (p)), Immunocytochemistry (ICC), Immunofluorescence (IF)

Product Details

Immunogen:	Recombinant protein encompassing a sequence within the center region of human PTER. The exact sequence is proprietary.
Isotype:	IgG
Cross-Reactivity:	Human, Mouse
Characteristics:	Rabbit Polyclonal antibody to PTER (phosphotriesterase-related protein) PTER antibody
Purification:	Purified by antigen-affinity chromatography.

Target Details

Target:	PTER
Alternative Name:	phosphotriesterase related (PTER Products)

Target Details

Molecular Weight:	39 kDa
Gene ID:	9317
UniProt:	Q96BW5

Application Details

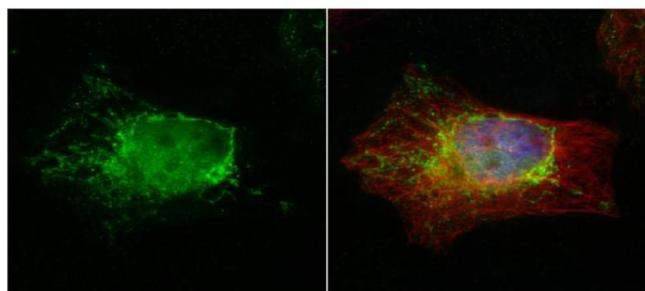
Application Notes:	WB: 1:500-1:3000. ICC/IF: 1:100-1:1000. IHC-P: 1:100-1:1000. Optimal dilutions/concentrations should be determined by the researcher. Not tested in other applications.
Comment:	Positive Control: A431
Restrictions:	For Research Use only

Handling

Format:	Liquid
Concentration:	0.96 mg/mL
Buffer:	0.1M Tris-Glycine (pH 7), 10 % Glycerol, 0.01 % Thimerosal
Preservative:	Thimerosal (Merthiolate)
Precaution of Use:	This product contains Thimerosal (Merthiolate): a POISONOUS AND HAZARDOUS SUBSTANCE which should be handled by trained staff only.
Storage:	4 °C,-20 °C
Storage Comment:	Store as concentrated solution. Centrifuge briefly prior to opening vial. For short-term storage (1-2 weeks), store at 4°C. For long-term storage, aliquot and store at -20°C or below. Avoid multiple freeze-thaw cycles.

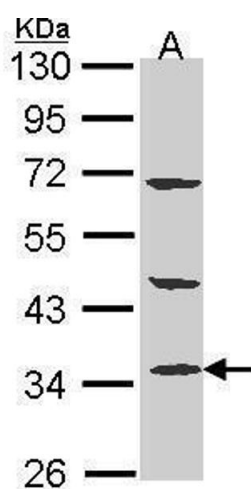
Publications

Product cited in:	Glaeser, Urban, Fenech, Voloshanenko, Kranz, Lari, Christianson, Boutros: "ERAD-dependent control of the Wnt secretory factor Evi." in: The EMBO journal , Vol. 37, Issue 4, (2018) (PubMed). Jain, Noordam, Hoshi, Vallania, Conrad: "Validating single-cell genomics for the study of renal development." in: Kidney international , Vol. 86, Issue 5, pp. 1049-55, (2015) (PubMed).
-------------------	---



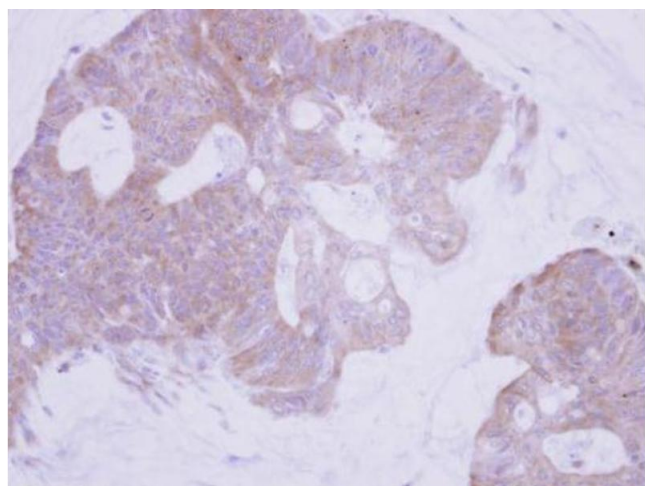
Immunofluorescence

Image 1. ICC/IF Image PTER antibody detects PTER protein at cytoplasm by immunofluorescent analysis. Sample: HeLa cells were fixed in 4% paraformaldehyde at RT for 15 min. Green: PTER protein stained by PTER antibody , diluted at 1:500. Red: alpha Tubulin, a cytoskeleton marker, stained by alpha Tubulin antibody [B-5-1-2] , diluted at 1:10000. Blue: Hoechst 33342 staining.



Western Blotting

Image 2. WB Image Sample (30 ug of whole cell lysate) A: A431 , 10% SDS PAGE antibody diluted at 1:1000



Immunohistochemistry

Image 3. IHC-P Image Immunohistochemical analysis of paraffin-embedded human colon carcinoma, using PTER, antibody at 1:500 dilution.