

Datasheet for ABIN2855500

anti-SHP1 antibody

6 Images

[Go to Product page](#)

Overview

Quantity:	100 µL
Target:	SHP1 (PTPN6)
Reactivity:	Human
Host:	Rabbit
Clonality:	Polyclonal
Conjugate:	This SHP1 antibody is un-conjugated
Application:	Western Blotting (WB), Immunohistochemistry (Paraffin-embedded Sections) (IHC (p)), Immunoprecipitation (IP), Immunohistochemistry (Frozen Sections) (IHC (fro))

Product Details

Immunogen:	Recombinant protein encompassing a sequence within the center region of human SHP1. The exact sequence is proprietary.
Isotype:	IgG
Cross-Reactivity:	Human, Mouse, Rat
Characteristics:	Rabbit Polyclonal antibody to SHP1 (protein tyrosine phosphatase, non-receptor type 6) SHP1 antibody
Purification:	Purified by antigen-affinity chromatography.

Target Details

Target:	SHP1 (PTPN6)
Alternative Name:	protein tyrosine phosphatase non-receptor type 6 (PTPN6 Products)

Target Details

Background:	<p>The protein encoded by this gene is a member of the protein tyrosine phosphatase (PTP) family. PTPs are known to be signaling molecules that regulate a variety of cellular processes including cell growth, differentiation, mitotic cycle, and oncogenic transformation. N-terminal part of this PTP contains two tandem Src homolog (SH2) domains, which act as protein phospho-tyrosine binding domains, and mediate the interaction of this PTP with its substrates. This PTP is expressed primarily in hematopoietic cells, and functions as an important regulator of multiple signaling pathways in hematopoietic cells. This PTP has been shown to interact with, and dephosphorylate a wide spectrum of phospho-proteins involved in hematopoietic cell signaling. Multiple alternatively spliced variants of this gene, which encode distinct isoforms, have been reported.</p> <p>Cellular Localization: Cytoplasm , Nucleus (By similarity)</p>
Molecular Weight:	68 kDa
Gene ID:	5777
UniProt:	P29350
Pathways:	JAK-STAT Signaling , TCR Signaling , TLR Signaling , Nuclear Receptor Transcription Pathway , Positive Regulation of Peptide Hormone Secretion , Steroid Hormone Mediated Signaling Pathway , Response to Growth Hormone Stimulus , Regulation of Leukocyte Mediated Immunity , CXCR4-mediated Signaling Events , Signaling Events mediated by VEGFR1 and VEGFR2 , BCR Signaling

Application Details

Application Notes:	WB: 1:500-1:3000. IHC-P: 1:100-1:1000. IP: 1:100-1:500. Optimal dilutions/concentrations should be determined by the researcher. Not tested in other applications.
Comment:	Positive Control: NIH-3T3 , NCIH929, Jurkat Validation: Comparison
Restrictions:	For Research Use only

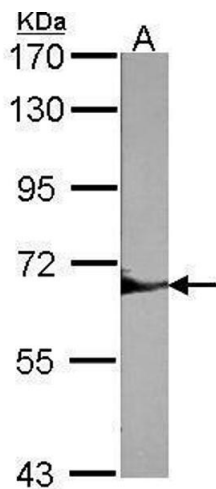
Handling

Format:	Liquid
Concentration:	1.34 mg/mL
Buffer:	1XPBS pH 7, 20 % Glycerol, 0.025 % ProClin 300

Handling

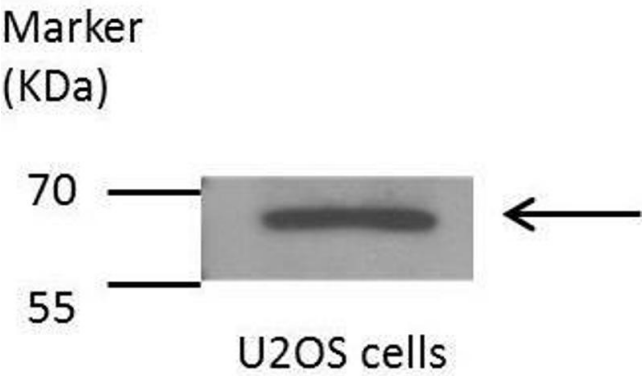
Preservative:	ProClin
Precaution of Use:	This product contains ProClin: a POISONOUS AND HAZARDOUS SUBSTANCE which should be handled by trained staff only.
Storage:	4 °C,-20 °C
Storage Comment:	Store as concentrated solution. Centrifuge briefly prior to opening vial. For short-term storage (1-2 weeks), store at 4°C. For long-term storage, aliquot and store at -20°C or below. Avoid multiple freeze-thaw cycles.

Images



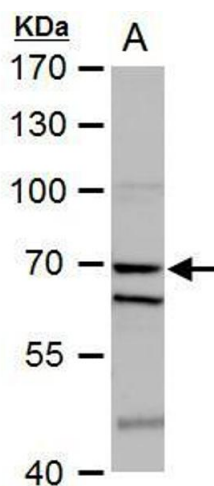
Western Blotting

Image 1. WB Image Sample (30 ug of whole cell lysate)
A:NIH-3T3 7.5% SDS PAGE antibody diluted at 1:1000



Western Blotting

Image 2. WB Image Sample(30 µg of whole cell lysate)
A:HeLaS3 B:Hep G2, 7.5% SDS PAGE antibody diluted at 1:500



Western Blotting

Image 3. WB Image SHP1 antibody detects SHP1 protein by western blot analysis. A. 50 µg rat liver extract 7.5 % SDS-PAGE SHP1 antibody , dilution: 1:1000

Please check the [product details page](#) for more images. Overall 6 images are available for ABIN2855500.