



Datasheet for ABIN2855501
anti-SHP1 antibody (Center)



[Go to Product page](#)

3 Images

Overview

Quantity:	100 µL
Target:	SHP1 (PTPN6)
Binding Specificity:	Center
Reactivity:	Human, Mouse
Host:	Rabbit
Clonality:	Polyclonal
Conjugate:	This SHP1 antibody is un-conjugated
Application:	Western Blotting (WB), Immunofluorescence (IF), Immunocytochemistry (ICC)

Product Details

Immunogen:	Recombinant protein encompassing a sequence within the center region of human SHP1. The exact sequence is proprietary.
Isotype:	IgG
Cross-Reactivity:	Rat (Rattus), Cow (Bovine)
Cross-Reactivity (Details):	Rat (92 %), Bovine (94 %)
Characteristics:	Rabbit Polyclonal antibody to SHP1 (protein tyrosine phosphatase, non-receptor type 6) SHP1 antibody
Purification:	Purified by antigen-affinity chromatography.

Target Details

Target: SHP1 (PTPN6)

Alternative Name: SHP1 ([PTPN6 Products](#))

Background: The protein encoded by this gene is a member of the protein tyrosine phosphatase (PTP) family. PTPs are known to be signaling molecules that regulate a variety of cellular processes including cell growth, differentiation, mitotic cycle, and oncogenic transformation. N-terminal part of this PTP contains two tandem Src homolog (SH2) domains, which act as protein phospho-tyrosine binding domains, and mediate the interaction of this PTP with its substrates. This PTP is expressed primarily in hematopoietic cells, and functions as an important regulator of multiple signaling pathways in hematopoietic cells. This PTP has been shown to interact with, and dephosphorylate a wide spectrum of phospho-proteins involved in hematopoietic cell signaling. Multiple alternatively spliced variants of this gene, which encode distinct isoforms, have been reported.

Molecular Weight: 68 kDa

Gene ID: 5777

Pathways: [JAK-STAT Signaling](#), [TCR Signaling](#), [TLR Signaling](#), [Nuclear Receptor Transcription Pathway](#), [Positive Regulation of Peptide Hormone Secretion](#), [Steroid Hormone Mediated Signaling Pathway](#), [Response to Growth Hormone Stimulus](#), [Regulation of Leukocyte Mediated Immunity](#), [CXCR4-mediated Signaling Events](#), [Signaling Events mediated by VEGFR1 and VEGFR2](#), [BCR Signaling](#)

Application Details

Application Notes: Suggested dilution Reference ICC/IF 1:100-1:1000* Western blot 1:500-1:3000* Not tested in other applications. *Optimal dilutions/concentrations should be determined by the researcher. Suggested dilution Reference ICC/IF 1:100-1:1000* Western blot 1:500-1:3000*

Comment: Positive Control: 293T , A431 , H1299 , HeLaS3 , NIH-3T3 , *U2OS

Restrictions: For Research Use only

Handling

Format: Liquid

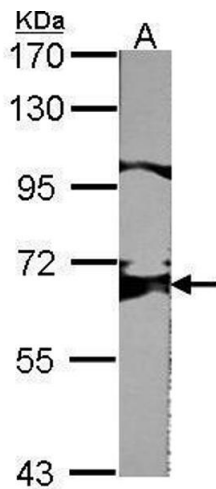
Concentration: 0.51 mg/mL

Buffer: 0.1M Tris, 0.1M Glycine, 10 % Glycerol (pH 7). 0.01 % Thimerosal was added as a preservative.

Handling

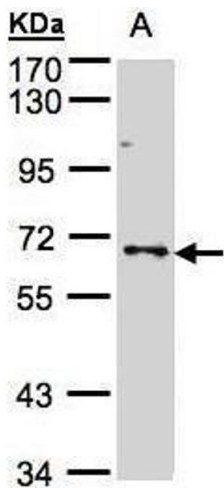
Preservative:	Thimerosal (Merthiolate)
Precaution of Use:	This product contains Thimerosal (Merthiolate): a POISONOUS AND HAZARDOUS SUBSTANCE which should be handled by trained staff only.
Storage:	-20 °C
Storage Comment:	Keep as concentrated solution. Aliquot and store at -20°C or below. Avoid multiple freeze-thaw cycles.

Images



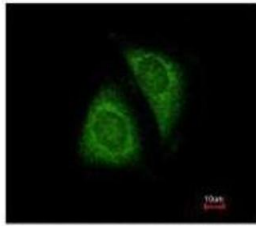
Western Blotting

Image 1. WB Image Sample (30 µg of whole cell lysate)
A:NIH-3T3 7.5% SDS PAGE antibody diluted at 1:1000

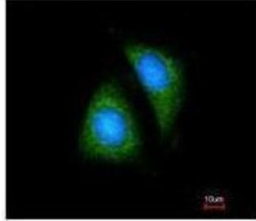


Western Blotting

Image 2. WB Image Sample(30 µg of whole cell lysate)
A:A431, 7.5% SDS PAGE antibody diluted at 1:500



Costained with Hoechst 33342



Immunofluorescence

Image 3. ICC/IF Image Immunofluorescence analysis of methanol-fixed HeLa, using SHP1, antibody at 1:200 dilution.