

Datasheet for ABIN2855503
anti-RFX3 antibody (Internal Region)[Go to Product page](#)

1 Image

Overview

| | |
|----------------------|-------------------------------------|
| Quantity: | 100 µL |
| Target: | RFX3 |
| Binding Specificity: | Internal Region |
| Reactivity: | Human |
| Host: | Rabbit |
| Clonality: | Polyclonal |
| Conjugate: | This RFX3 antibody is un-conjugated |
| Application: | Western Blotting (WB) |

Product Details

| | |
|-----------------------------|------------------------------------------------------------------------------------------------------------------------------------|
| Immunogen: | Recombinant protein encompassing a sequence within the center region of human RFX3. The exact sequence is proprietary. |
| Isotype: | IgG |
| Cross-Reactivity: | Mouse (Murine) |
| Cross-Reactivity (Details): | Mouse (100 %) |
| Characteristics: | Rabbit polyclonal antibody to RFX3 (regulatory factor X, 3 (influences HLA class II expression)) RFX3 antibody [N2C1], Internal |
| Purification: | Purified by antigen-affinity chromatography. |

Target Details

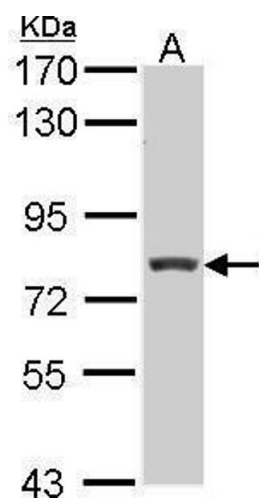
| | |
|-------------------|--------------------------------------------------------------------------------------------------------------------------------------------------------------------------------------------------------------------------------------------------------------------------------------------------------------------------------------------------------------------------------------------------------------------------------------------------------------------------------------------------------------------------------------------------------------------------------------------------------------|
| Target: | RFX3 |
| Alternative Name: | RFX3 (RFX3 Products) |
| Background: | <p>This gene is a member of the regulatory factor X gene family, which encodes transcription factors that contain a highly-conserved winged helix DNA binding domain. The protein encoded by this gene is structurally related to regulatory factors X1, X2, X4, and X5. It is a transcriptional activator that can bind DNA as a monomer or as a heterodimer with other RFX family members. Two transcript variants encoding different isoforms have been described for this gene, and at least one of the variants utilizes alternative polyadenylation signals.</p> <p>Cellular Localization: Nucleus</p> |
| Molecular Weight: | 84 kDa |
| Gene ID: | 5991 |

Application Details

| | |
|--------------------|---------------------------------------------------------------------------------------------------------------------------------------------------------------------------------------------------------------------------------------|
| Application Notes: | <p>Suggested dilution Reference Western blot 1:500-1:3000* Not tested in other applications.</p> <p>*Optimal dilutions/concentrations should be determined by the researcher.Suggested dilutionReferenceWestern blot1:500-1:3000*</p> |
| Comment: | Positive Control: A431 , HeLa , HepG2 , Molt-4 , Raji |
| Restrictions: | For Research Use only |

Handling

| | |
|--------------------|------------------------------------------------------------------------------------------------------------------------------------|
| Format: | Liquid |
| Concentration: | 0.3 mg/mL |
| Buffer: | 1XPBS, 10 % Glycerol (pH 7). 0.01 % Thimerosal was added as a preservative. |
| Preservative: | Thimerosal (Merthiolate) |
| Precaution of Use: | This product contains Thimerosal (Merthiolate): a POISONOUS AND HAZARDOUS SUBSTANCE which should be handled by trained staff only. |
| Storage: | -20 °C |
| Storage Comment: | Keep as concentrated solution. Aliquot and store at -20°C or below. Avoid multiple freeze-thaw cycles. |



Western Blotting

Image 1. WB Image Sample (30 ug of whole cell lysate) A:
Hep G2 , 7.5% SDS PAGE antibody diluted at 1:1000