

Datasheet for ABIN2855508  
**anti-DIAPH3 antibody (Center)**[Go to Product page](#)

## 1 Image

## Overview

Quantity:	100 µL
Target:	DIAPH3
Binding Specificity:	Center
Reactivity:	Human
Host:	Rabbit
Clonality:	Polyclonal
Conjugate:	This DIAPH3 antibody is un-conjugated
Application:	Immunohistochemistry (Paraffin-embedded Sections) (IHC (p))

## Product Details

Immunogen:	Recombinant protein encompassing a sequence within the center region of human DIAPH3. The exact sequence is proprietary.
Isotype:	IgG
Cross-Reactivity:	Cow (Bovine)
Cross-Reactivity (Details):	Bovine (90 %)
Characteristics:	Rabbit polyclonal antibody to DIAPH3 (diaphanous homolog 3 (Drosophila)) DIAPH3 antibody [C1C3]
Purification:	Purified by antigen-affinity chromatography.

## Target Details

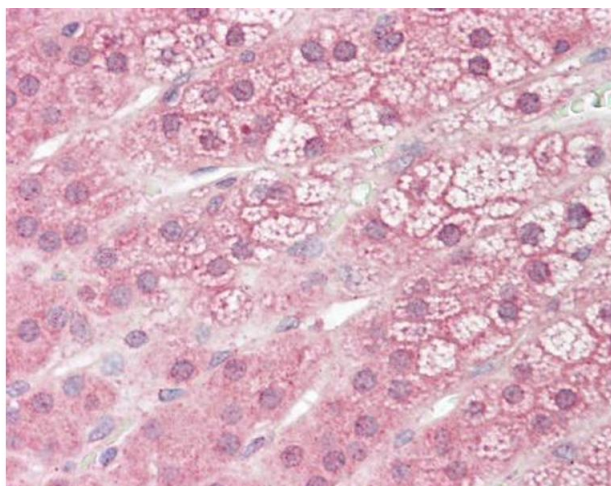
Target:	DIAPH3
Alternative Name:	DIAPH3 ( <a href="#">DIAPH3 Products</a> )
Background:	Binds to GTP-bound form of Rho and to profilin. Acts in a Rho-dependent manner to recruit profilin to the membrane, where it promotes actin polymerization. It is required for cytokinesis, stress fiber formation, and transcriptional activation of the serum response factor. DFR proteins couple Rho and Src tyrosine kinase during signaling and the regulation of actin dynamics.
Molecular Weight:	137 kDa
Gene ID:	81624

## Application Details

Application Notes:	Suggested dilution Reference IHC (Formalin-fixed paraffin-embedded sections) 1:100-1:1000* Not tested in other applications. *Optimal dilutions/concentrations should be determined by the researcher.Suggested dilutionReferenceIHC (Formalin-fixed paraffin-embedded sections)1:100-1:1000*
Comment:	Positive Control: Target recombinant protein
Restrictions:	For Research Use only

## Handling

Format:	Liquid
Concentration:	1 mg/mL
Buffer:	0.1M Tris, 0.1M Glycine, 10 % Glycerol ( pH 7). 0.01 % Thimerosal was added as a preservative.
Preservative:	Thimerosal (Merthiolate)
Precaution of Use:	This product contains Thimerosal (Merthiolate): a POISONOUS AND HAZARDOUS SUBSTANCE which should be handled by trained staff only.
Storage:	-20 °C
Storage Comment:	Keep as concentrated solution. Aliquot and store at -20°C or below. Avoid multiple freeze-thaw cycles.



#### Immunohistochemistry

**Image 1.** IHC-P Image DIAPH3 antibody [C1C3] detects DIAPH3 protein at cytoplasm on human placenta by immunohistochemical analysis. Sample: Paraffin-embedded placenta. DIAPH3 antibody [C1C3] , dilution: 1:100.