

Datasheet for ABIN2855509  
**anti-TAO Kinase 3 antibody**[Go to Product page](#)

## 3 Images

## Overview

Quantity:	100 µL
Target:	TAO Kinase 3 (TAOK3)
Reactivity:	Human
Host:	Rabbit
Clonality:	Polyclonal
Conjugate:	This TAO Kinase 3 antibody is un-conjugated
Application:	Western Blotting (WB), Immunohistochemistry (Paraffin-embedded Sections) (IHC (p)), Immunofluorescence (IF), Immunocytochemistry (ICC)

## Product Details

Immunogen:	Recombinant protein encompassing a sequence within the center region of human JIK. The exact sequence is proprietary.
Isotype:	IgG
Cross-Reactivity:	Human
Characteristics:	Rabbit Polyclonal antibody to JIK (TAO kinase 3) JIK antibody [N2C2], Internal
Purification:	Purified by antigen-affinity chromatography.

## Target Details

Target:	TAO Kinase 3 (TAOK3)
Alternative Name:	TAO kinase 3 ( <a href="#">TAOK3 Products</a> )

## Target Details

Background: Inhibits the basal activity of Jun kinase. Negatively regulated by epidermal growth factor (EGF).  
When overexpressed, may activate ERK1/ERK2 and JNK/SAPK.

Cellular Localization: Cytoplasm , Cell membrane, Peripheral membrane protein

Molecular Weight: 105 kDa

Gene ID: 51347

UniProt: [Q9H2K8](#)

## Application Details

Application Notes: WB: 1:500-1:3000. ICC/IF: 1:100-1:1000. IHC-P: 1:100-1:1000. Optimal dilutions/concentrations should be determined by the researcher. Not tested in other applications.

Comment: Positive Control: Raji

Restrictions: For Research Use only

## Handling

Format: Liquid

Concentration: 0.74 mg/mL

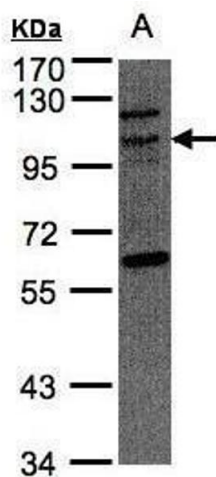
Buffer: 0.1M Tris-Glycine ( pH 7), 10 % Glycerol, 0.01 % Thimerosal

Preservative: Thimerosal (Merthiolate)

Precaution of Use: This product contains Thimerosal (Merthiolate): a POISONOUS AND HAZARDOUS SUBSTANCE which should be handled by trained staff only.

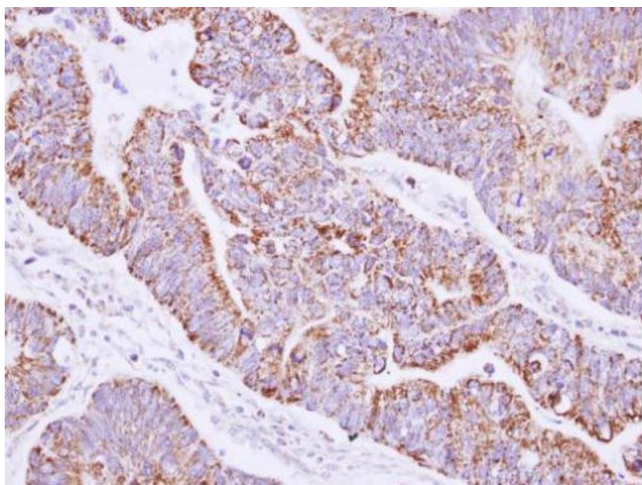
Storage: 4 °C, -20 °C

Storage Comment: Store as concentrated solution. Centrifuge briefly prior to opening vial. For short-term storage (1-2 weeks), store at 4°C. For long-term storage, aliquot and store at -20°C or below. Avoid multiple freeze-thaw cycles.



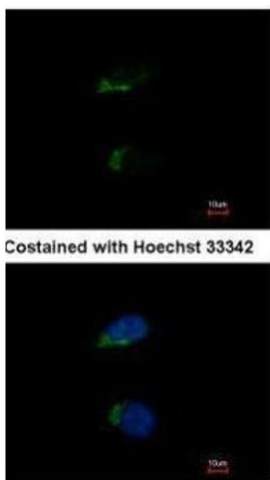
### Western Blotting

**Image 1.** WB Image Sample(30 µg of whole cell lysate)  
A:Raji, 7.5% SDS PAGE antibody diluted at 1:500



### Immunohistochemistry

**Image 2.** IHC-P Image Immunohistochemical analysis of paraffin-embedded human gastric cancer, using JIK, antibody at 1:100 dilution.



### Immunofluorescence

**Image 3.** ICC/IF Image Immunofluorescence analysis of methanol-fixed HeLa, using JIK, antibody at 1:500 dilution.