

Datasheet for ABIN2855513
anti-MCC antibody (Center)[Go to Product page](#)

2 Images

Overview

Quantity:	100 µL
Target:	MCC
Binding Specificity:	Center
Reactivity:	Human
Host:	Rabbit
Clonality:	Polyclonal
Conjugate:	This MCC antibody is un-conjugated
Application:	Western Blotting (WB), Immunohistochemistry (Paraffin-embedded Sections) (IHC (p))

Product Details

Immunogen:	Recombinant protein encompassing a sequence within the center region of human MCC. The exact sequence is proprietary.
Isotype:	IgG
Cross-Reactivity:	Mouse (Murine), Rat (Rattus), Cow (Bovine), Xenopus tropicalis
Cross-Reactivity (Details):	Mouse (97 %), Rat (97 %), Bovine (96 %), Xenopus tropicalis (92 %)
Characteristics:	Rabbit Polyclonal antibody to MCC (mutated in colorectal cancers) MCC antibody [N1N3]
Purification:	Purified by antigen-affinity chromatography.

Target Details

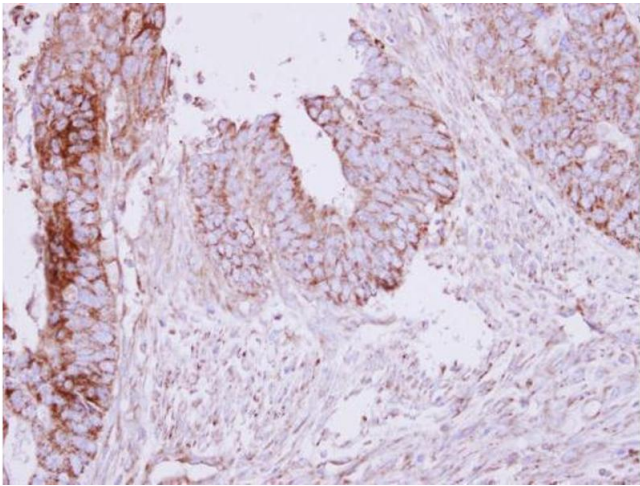
Target:	MCC
Alternative Name:	MCC (MCC Products)
Background:	This gene is a candidate colorectal tumor suppressor gene that is thought to negatively regulate cell cycle progression. The orthologous gene in the mouse expresses a phosphoprotein associated with the plasma membrane and membrane organelles, and overexpression of the mouse protein inhibits entry into S phase. Multiple transcript variants encoding different isoforms have been found for this gene.
Molecular Weight:	93 kDa
Gene ID:	4163

Application Details

Application Notes:	Suggested dilution Reference IHC (Formalin-fixed paraffin-embedded sections) 1:100-1:1000* Western blot 1:500-1:3000* Not tested in other applications. *Optimal dilutions/concentrations should be determined by the researcher. Suggested dilution Reference IHC (Formalin-fixed paraffin-embedded sections) 1:100-1:1000* Western blot 1:500-1:3000*
Comment:	Positive Control: IMR32 , U87-MG
Restrictions:	For Research Use only

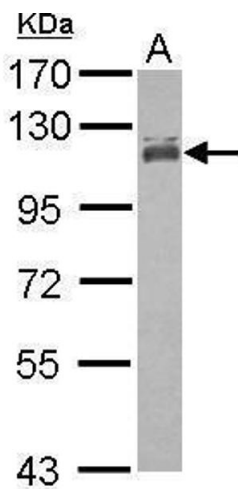
Handling

Format:	Liquid
Concentration:	1 mg/mL
Buffer:	1XPBS, 1 % BSA, 20 % Glycerol (pH 7). 0.01 % Thimerosal was added as a preservative.
Preservative:	Thimerosal (Merthiolate)
Precaution of Use:	This product contains Thimerosal (Merthiolate): a POISONOUS AND HAZARDOUS SUBSTANCE which should be handled by trained staff only.
Storage:	-20 °C
Storage Comment:	Keep as concentrated solution. Aliquot and store at -20°C or below. Avoid multiple freeze-thaw cycles.



Immunohistochemistry

Image 1. IHC-P Image Immunohistochemical analysis of paraffin-embedded human colon carcinoma, using MCC, antibody at 1:250 dilution.



Western Blotting

Image 2. WB Image Sample (30 ug of whole cell lysate) A: IMR32 7.5% SDS PAGE antibody diluted at 1:1000