

Datasheet for ABIN2855521
anti-MYL3/CMLC1 antibody[Go to Product page](#)

2 Images

Overview

Quantity:	100 µL
Target:	MYL3/CMLC1 (MYL3)
Reactivity:	Human
Host:	Rabbit
Clonality:	Polyclonal
Conjugate:	This MYL3/CMLC1 antibody is un-conjugated
Application:	Western Blotting (WB)

Product Details

Immunogen:	Recombinant protein encompassing a sequence within the center region of human Myosin Light Chain 3. The exact sequence is proprietary.
Isotype:	IgG
Cross-Reactivity:	Human, Mouse
Characteristics:	Rabbit Polyclonal antibody to Myosin Light Chain 3 (myosin, light chain 3, alkali, ventricular, skeletal, slow) Myosin Light Chain 3 antibody [N1C3]
Purification:	Purified by antigen-affinity chromatography.

Target Details

Target:	MYL3/CMLC1 (MYL3)
Alternative Name:	myosin light chain 3 (MYL3 Products)

Target Details

Background: MYL3 encodes myosin light chain 3, an alkali light chain also referred to in the literature as both the ventricular isoform and the slow skeletal muscle isoform. Mutations in MYL3 have been identified as a cause of mid-left ventricular chamber type hypertrophic cardiomyopathy.

Molecular Weight: 22 kDa

Gene ID: 4634

UniProt: [P08590](#)

Application Details

Application Notes: WB: 1:1000-1:10000. Optimal dilutions/concentrations should be determined by the researcher. Not tested in other applications.

Comment: Positive Control: Mouse heart , Molt-4

Restrictions: For Research Use only

Handling

Format: Liquid

Concentration: 0.52 mg/mL

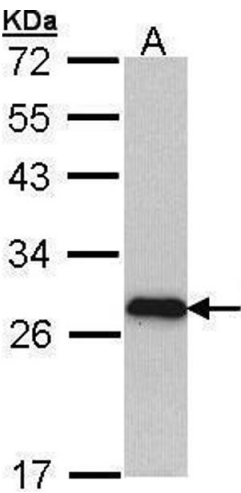
Buffer: 0.1M Tris-Glycine (pH 7), 10 % Glycerol, 0.01 % Thimerosal

Preservative: Thimerosal (Merthiolate)

Precaution of Use: This product contains Thimerosal (Merthiolate): a POISONOUS AND HAZARDOUS SUBSTANCE which should be handled by trained staff only.

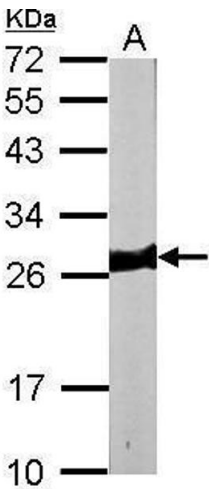
Storage: 4 °C,-20 °C

Storage Comment: Store as concentrated solution. Centrifuge briefly prior to opening vial. For short-term storage (1-2 weeks), store at 4°C. For long-term storage, aliquot and store at -20°C or below. Avoid multiple freeze-thaw cycles.



Western Blotting

Image 1. WB Image Sample (30 ug of whole cell lysate) A:
Molt-4 , 12% SDS PAGE antibody diluted at 1:1000



Western Blotting

Image 2. WB Image Sample (50 ug of whole cell lysate) A:
mouse heart 12% SDS PAGE antibody diluted at 1:10000