

Datasheet for ABIN2855524

**anti-NCF1 antibody**

3 Images

[Go to Product page](#)

## Overview

Quantity:	100 µL
Target:	NCF1
Reactivity:	Human
Host:	Rabbit
Clonality:	Polyclonal
Conjugate:	This NCF1 antibody is un-conjugated
Application:	Western Blotting (WB), Immunofluorescence (IF), Immunohistochemistry (Paraffin-embedded Sections) (IHC (p)), Immunocytochemistry (ICC)

## Product Details

Immunogen:	Recombinant protein encompassing a sequence within the center region of human NCF1. The exact sequence is proprietary.
Isotype:	IgG
Cross-Reactivity:	Human
Characteristics:	Rabbit Polyclonal antibody to NCF1 (neutrophil cytosolic factor 1) NCF1 antibody
Purification:	Purified by antigen-affinity chromatography.

## Target Details

Target:	NCF1
Alternative Name:	neutrophil cytosolic factor 1 ( <a href="#">NCF1 Products</a> )

## Target Details

**Background:** The protein encoded by this gene is a 47 kDa cytosolic subunit of neutrophil NADPH oxidase. This oxidase is a multicomponent enzyme that is activated to produce superoxide anion. Mutations in this gene have been associated with chronic granulomatous disease.

Cellular Localization: Cytoplasm

**Molecular Weight:** 45 kDa

**Gene ID:** 653361

**UniProt:** [P14598](#)

**Pathways:** [PI3K-Akt Signaling](#)

## Application Details

**Application Notes:** WB: 1:1000-1:10000. ICC/IF: 1:100-1:1000. IHC-P: 1:100-1:1000. Optimal dilutions/concentrations should be determined by the researcher. Not tested in other applications.

**Comment:** Positive Control: Raji

**Restrictions:** For Research Use only

## Handling

**Format:** Liquid

**Concentration:** 1 mg/mL

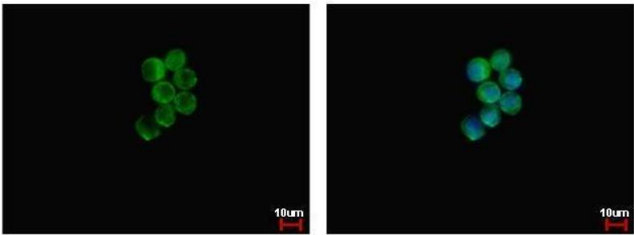
**Buffer:** 1XPBS ( pH 7), 1 % BSA, 20 % Glycerol, 0.01 % Thimerosal

**Preservative:** Thimerosal (Merthiolate)

**Precaution of Use:** This product contains Thimerosal (Merthiolate): a POISONOUS AND HAZARDOUS SUBSTANCE which should be handled by trained staff only.

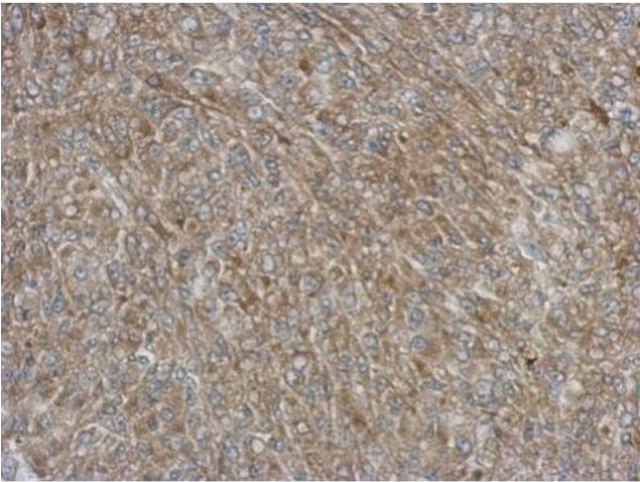
**Storage:** 4 °C, -20 °C

**Storage Comment:** Store as concentrated solution. Centrifuge briefly prior to opening vial. For short-term storage (1-2 weeks), store at 4°C. For long-term storage, aliquot and store at -20°C or below. Avoid multiple freeze-thaw cycles.



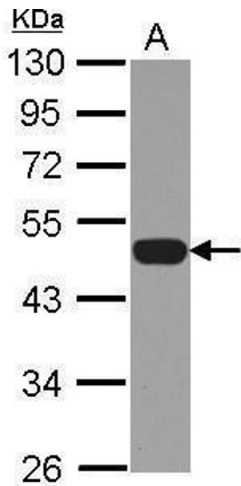
### Immunofluorescence

**Image 1.** ICC/IF Image NCF1 antibody detects NCF1 protein at cytoplasm by immunofluorescent analysis. Sample: Raji cells were fixed in 4% paraformaldehyde at RT for 15 min. Green: NCF1 protein stained by NCF1 antibody , diluted at 1:500. Blue: Hoechst 33342 staining.



### Immunohistochemistry

**Image 2.** IHC-P Image Immunohistochemical analysis of paraffin-embedded Hela xenograft, using NCF1, antibody at 1:500 dilution.



### Western Blotting

**Image 3.** WB Image Sample (30 ug of whole cell lysate) A: Raji 10% SDS PAGE antibody diluted at 1:5000