

Datasheet for ABIN2855530  
**anti-COL1A2 antibody (C-Term)**[Go to Product page](#)

## 2 Images

## Overview

Quantity:	100 µL
Target:	COL1A2
Binding Specificity:	C-Term
Reactivity:	Human
Host:	Rabbit
Clonality:	Polyclonal
Conjugate:	This COL1A2 antibody is un-conjugated
Application:	Western Blotting (WB), Immunofluorescence (IF), Immunocytochemistry (ICC)

## Product Details

Immunogen:	Recombinant protein encompassing a sequence within the C-terminus region of human COL1A2. The exact sequence is proprietary.
Isotype:	IgG
Cross-Reactivity:	Human, Mouse, Zebrafish (Danio rerio)
Characteristics:	Rabbit Polyclonal antibody to COL1A2 (collagen, type I, alpha 2) COL1A2 antibody [C2C3], C-term
Purification:	Purified by antigen-affinity chromatography.
Grade:	KO Validated

## Target Details

Target:	COL1A2
Alternative Name:	collagen type I alpha 2 chain ( <a href="#">COL1A2 Products</a> )
Background:	<p>This gene encodes the pro-alpha2 chain of type I collagen whose triple helix comprises two alpha1 chains and one alpha2 chain. Type I is a fibril-forming collagen found in most connective tissues and is abundant in bone, cornea, dermis and tendon. Mutations in this gene are associated with osteogenesis imperfecta types I-IV, Ehlers-Danlos syndrome type VIIB, recessive Ehlers-Danlos syndrome Classical type, idiopathic osteoporosis, and atypical Marfan syndrome. Symptoms associated with mutations in this gene, however, tend to be less severe than mutations in the gene for the alpha1 chain of type I collagen (COL1A1) reflecting the different role of alpha2 chains in matrix integrity. Three transcripts, resulting from the use of alternate polyadenylation signals, have been identified for this gene. [provided by R. Dalglish]</p> <p>Cellular Localization: Secreted , extracellular space , extracellular matrix</p>
Molecular Weight:	129 kDa
Gene ID:	1278
UniProt:	<a href="#">P08123</a>

## Application Details

Application Notes:	WB: 1:1000-1:10000. ICC/IF: 1:100-1:1000. Optimal dilutions/concentrations should be determined by the researcher. Not tested in other applications.
Comment:	Validation: KO/KD, Orthogonal, Overexpression
Restrictions:	For Research Use only

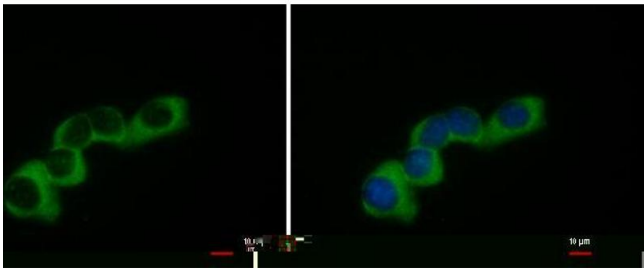
## Handling

Format:	Liquid
Concentration:	2.61 mg/mL
Buffer:	1XPBS pH 7, 20 % Glycerol, 0.025 % ProClin 300
Preservative:	ProClin
Precaution of Use:	This product contains ProClin: a POISONOUS AND HAZARDOUS SUBSTANCE which should be handled by trained staff only.
Storage:	4 °C,-20 °C

Handling

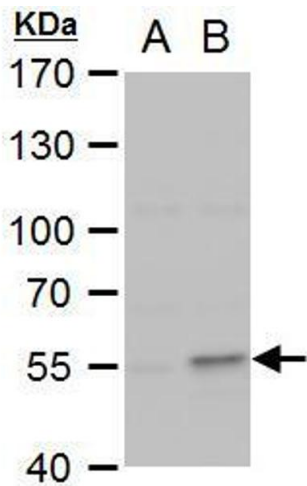
Storage Comment: Store as concentrated solution. Centrifuge briefly prior to opening vial. For short-term storage (1-2 weeks), store at 4°C. For long-term storage, aliquot and store at -20°C or below. Avoid multiple freeze-thaw cycles.

Validation report #104383 for Cleavage Under Targets and Release Using Nuclease (CUT&RUN)



Immunofluorescence

**Image 1.** ICC/IF Image COL1A2 antibody [C2C3], C-term detects COL1A2 protein at cytoplasm by immunofluorescent analysis. Sample: NIH-3T3 cells were fixed in ice-cold MeOH for 5 min. Green: COL1A2 protein stained by COL1A2 antibody [C2C3], C-term , diluted at 1:500. Blue: Hoechst 33342 staining.



Western Blotting

**Image 2.** WB Image COL1A2 antibody [C2C3], C-term detects COL1A2 protein by western blot analysis. A. 30 µg 293T whole cell extract B. 30 µg whole cell extract of GFP-human COL1A2-transfected 293T cells (partial) 10 % SDS-PAGE COL1A2 antibody [C2C3], C-term , dilution: 1:5000