

Datasheet for ABIN2855536  
**anti-SERPINH1 antibody (Internal Region)**

## 5 Images

[Go to Product page](#)

## Overview

Quantity:	100 µL
Target:	SERPINH1
Binding Specificity:	Internal Region
Reactivity:	Human, Mouse
Host:	Rabbit
Clonality:	Polyclonal
Conjugate:	This SERPINH1 antibody is un-conjugated
Application:	Western Blotting (WB), Immunohistochemistry (Paraffin-embedded Sections) (IHC (p))

## Product Details

Immunogen:	Recombinant protein encompassing a sequence within the center region of human HSP47. The exact sequence is proprietary.
Isotype:	IgG
Cross-Reactivity:	Chimpanzee, Rhesus Monkey
Cross-Reactivity (Details):	Rhesus Monkey (100 %), Chimpanzee (100 %)
Characteristics:	Rabbit Polyclonal antibody to HSP47 (serpin peptidase inhibitor, clade H (heat shock protein 47), member 1, (collagen binding protein 1)) HSP47 antibody [N2C2], Internal
Purification:	Purified by antigen-affinity chromatography.

## Target Details

Target:	SERPINH1
Alternative Name:	HSP47 ( <a href="#">SERPINH1 Products</a> )
Target Type:	Viral Protein
Background:	<p>This gene encodes a member of the serpin superfamily of serine proteinase inhibitors. Its expression is induced by heat shock. The protein localizes to the endoplasmic reticulum lumen and binds collagen, thus it is thought to be a molecular chaperone involved in the maturation of collagen molecules. Autoantibodies to this protein have been found in patients with rheumatoid arthritis.</p> <p>Cellular Localization: Endoplasmic reticulum lumen</p>
Molecular Weight:	46 kDa
Gene ID:	871

## Application Details

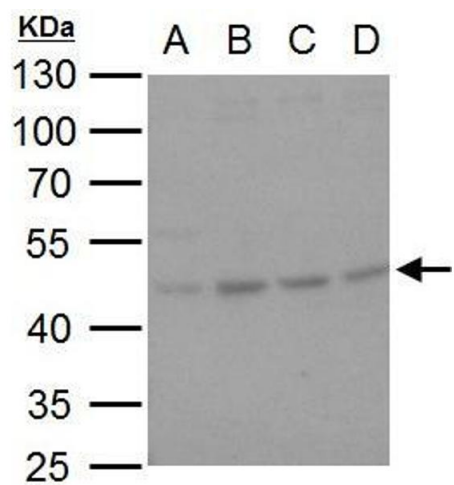
Application Notes:	<p>Suggested dilution Reference IHC (Formalin-fixed paraffin-embedded sections) 1:100-1:1000* Western blot 1:500-1:3000* Not tested in other applications. *Optimal dilutions/concentrations should be determined by the researcher. Suggested dilution Reference IHC (Formalin-fixed paraffin-embedded sections) 1:100-1:1000* Western blot 1:500-1:3000*</p>
Comment:	Positive Control: NIH-3T3 , A431 , HeLa , HepG2 , U87-MG , SK-N-SH , IMR32 , SK-N-AS
Restrictions:	For Research Use only

## Handling

Format:	Liquid
Concentration:	0.37 mg/mL
Buffer:	0.1M Tris, 0.1M Glycine, 20 % Glycerol ( pH 7). 0.01 % Thimerosal was added as a preservative.
Preservative:	Thimerosal (Merthiolate)
Precaution of Use:	This product contains Thimerosal (Merthiolate): a POISONOUS AND HAZARDOUS SUBSTANCE which should be handled by trained staff only.
Storage:	-20 °C
Storage Comment:	Keep as concentrated solution. Aliquot and store at -20°C or below. Avoid multiple freeze-thaw

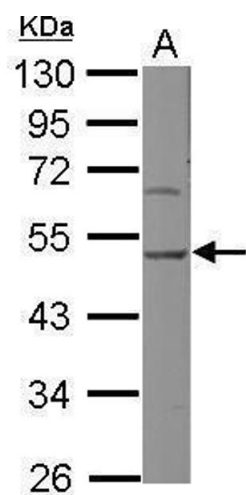
cycles.

Images



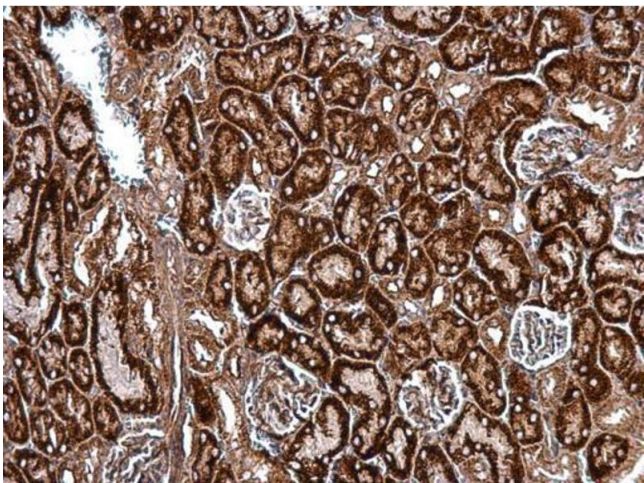
**Western Blotting**

**Image 1.** WB Image HSP47 antibody [N2C2], Internal detects HSP47 protein by western blot analysis. A. 30 µg U87-MG whole cell lysate/extract B. 30 µg SK-N-SH whole cell lysate/extract C. 30 µg IMR32 whole cell lysate/extract D. 30 µg SK-N-AS whole cell lysate/extract 10 % SDS-PAGE HSP47 antibody [N2C2], Internal , dilution: 1:500



**Western Blotting**

**Image 2.** WB Image Sample (30 ug of whole cell lysate) A: NIH-3T3 10% SDS PAGE antibody diluted at 1:500



**Immunohistochemistry**

**Image 3.** IHC-P Image HSP47 antibody [N2C2], Internal detects HSP47 protein at cytosol on mouse kidney by immunohistochemical analysis. Sample: Paraffin-embedded mouse kidney. HSP47 antibody [N2C2], Internal , dilution: 1:500.

Please check the [product details page](#) for more images. Overall 5 images are available for ABIN2855536.