

Datasheet for ABIN2855537

anti-KIF2C antibody**2** Images[Go to Product page](#)

Overview

Quantity:	100 µL
Target:	KIF2C
Reactivity:	Human
Host:	Rabbit
Clonality:	Polyclonal
Conjugate:	This KIF2C antibody is un-conjugated
Application:	Western Blotting (WB), Immunofluorescence (IF), Immunocytochemistry (ICC)

Product Details

Immunogen:	Recombinant protein encompassing a sequence within the center region of human MCAK. The exact sequence is proprietary.
Isotype:	IgG
Cross-Reactivity:	Human
Characteristics:	Rabbit Polyclonal antibody to MCAK (kinesin family member 2C) MCAK antibody [N1N3]
Purification:	Purified by antigen-affinity chromatography.

Target Details

Target:	KIF2C
Alternative Name:	kinesin family member 2C (KIF2C Products)

Target Details

Background: The protein encoded by this gene is a member of kinesin-like protein family. Proteins of this family are microtubule-dependent molecular motors that transport organelles within cells and move chromosomes during cell division. This protein is important for anaphase chromosome segregation and may be required to coordinate the onset of sister centromere separation.

Cellular Localization: Cytoplasm , cytoskeleton (By similarity) , Nucleus (By similarity) , Centromere

Molecular Weight: 81 kDa

Gene ID: 11004

UniProt: [Q99661](#)

Pathways: [Microtubule Dynamics](#)

Application Details

Application Notes: WB: 1:500-1:3000. ICC/IF: 1:100-1:1000. Optimal dilutions/concentrations should be determined by the researcher. Not tested in other applications.

Comment: Positive Control: K562

Restrictions: For Research Use only

Handling

Format: Liquid

Concentration: 1 mg/mL

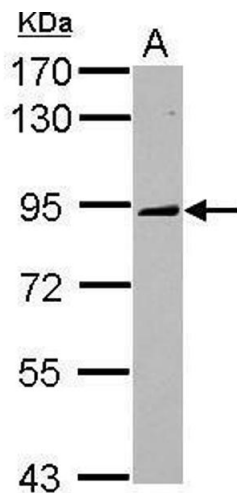
Buffer: 1XPBS (pH 7), 1 % BSA, 20 % Glycerol, 0.01 % Thimerosal

Preservative: Thimerosal (Merthiolate)

Precaution of Use: This product contains Thimerosal (Merthiolate): a POISONOUS AND HAZARDOUS SUBSTANCE which should be handled by trained staff only.

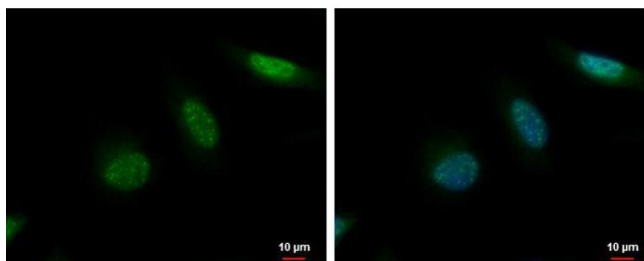
Storage: 4 °C,-20 °C

Storage Comment: Store as concentrated solution. Centrifuge briefly prior to opening vial. For short-term storage (1-2 weeks), store at 4°C. For long-term storage, aliquot and store at -20°C or below. Avoid multiple freeze-thaw cycles.



Western Blotting

Image 1. WB Image Sample (30 ug of whole cell lysate) A: K562 7.5% SDS PAGE antibody diluted at 1:1000



Immunofluorescence

Image 2. ICC/IF Image MCAK antibody [N1N3] detects MCAK protein at nucleus by immunofluorescent analysis. Sample: HeLa cells were fixed in 4% paraformaldehyde at RT for 15 min. Green: MCAK protein stained by MCAK antibody [N1N3] , diluted at 1:500. Blue: Hoechst 33342 staining.