

Datasheet for ABIN2855541

anti-ATIC antibody

3 Images

[Go to Product page](#)

Overview

Quantity:	100 µL
Target:	ATIC
Reactivity:	Human
Host:	Rabbit
Clonality:	Polyclonal
Conjugate:	This ATIC antibody is un-conjugated
Application:	Western Blotting (WB), Immunofluorescence (IF), Immunohistochemistry (Paraffin-embedded Sections) (IHC (p)), Immunocytochemistry (ICC)

Product Details

Immunogen:	Recombinant protein encompassing a sequence within the center region of human ATIC. The exact sequence is proprietary.
Isotype:	IgG
Cross-Reactivity:	Human
Characteristics:	Rabbit Polyclonal antibody to ATIC (5-aminoimidazole-4-carboxamide ribonucleotide formyltransferase/IMP cyclohydrolase) ATIC antibody
Purification:	Purified by antigen-affinity chromatography.

Target Details

Target:	ATIC
---------	------

Target Details

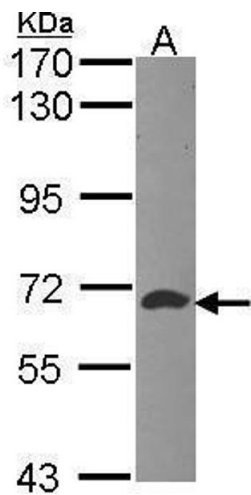
Alternative Name:	5-aminoimidazole-4-carboxamide ribonucleotide formyltransferase/IMP cyclohydrolase (ATIC Products)
Background:	This gene encodes a bifunctional protein that catalyzes the last two steps of the de novo purine biosynthetic pathway. The N-terminal domain has phosphoribosylaminoimidazolecarboxamide formyltransferase activity, and the C-terminal domain has IMP cyclohydrolase activity. A mutation in this gene results in AICA-ribosiduria.
Molecular Weight:	65 kDa
Gene ID:	471
UniProt:	P31939

Application Details

Application Notes:	WB: 1:500-1:3000. ICC/IF: 1:100-1:1000. IHC-P: 1:100-1:1000. Optimal dilutions/concentrations should be determined by the researcher. Not tested in other applications.
Comment:	Positive Control: HepG2
Restrictions:	For Research Use only

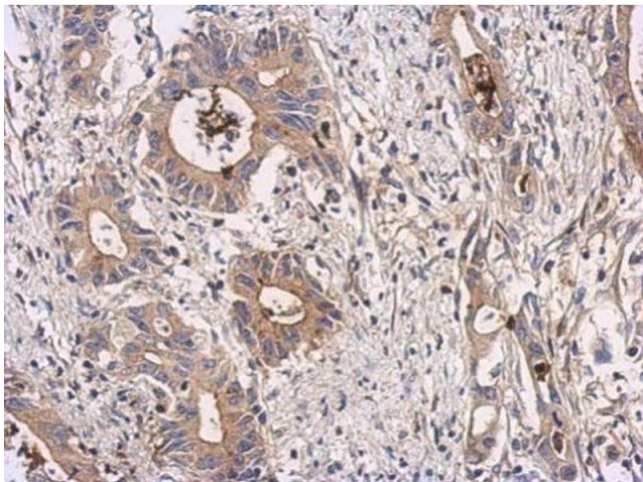
Handling

Format:	Liquid
Concentration:	0.54 mg/mL
Buffer:	0.1M Tris-Glycine (pH 7), 10 % Glycerol, 0.01 % Thimerosal
Preservative:	Thimerosal (Merthiolate)
Precaution of Use:	This product contains Thimerosal (Merthiolate): a POISONOUS AND HAZARDOUS SUBSTANCE which should be handled by trained staff only.
Storage:	4 °C,-20 °C
Storage Comment:	Store as concentrated solution. Centrifuge briefly prior to opening vial. For short-term storage (1-2 weeks), store at 4°C. For long-term storage, aliquot and store at -20°C or below. Avoid multiple freeze-thaw cycles.



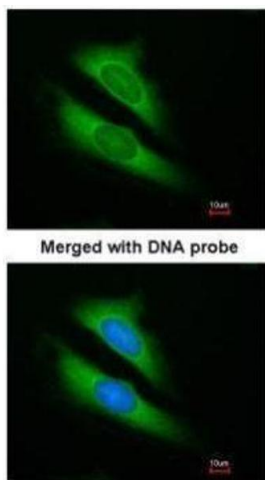
Western Blotting

Image 1. WB Image Sample (30 ug of whole cell lysate) A: Hep G2 , 7.5% SDS PAGE ATIC antibody antibody diluted at 1:1000



Immunohistochemistry

Image 2. IHC-P Image Immunohistochemical analysis of paraffin-embedded human colon carcinoma, using ATIC, antibody at 1:100 dilution.



Immunofluorescence

Image 3. ICC/IF Image Immunofluorescence analysis of paraformaldehyde-fixed HeLa, using ATIC, antibody at 1:200 dilution.