

Datasheet for ABIN2855543

**anti-Cyclin A antibody**

8 Images

5 Publications

[Go to Product page](#)

## Overview

Quantity:	100 µL
Target:	Cyclin A (CCNA2)
Reactivity:	Human
Host:	Rabbit
Clonality:	Polyclonal
Conjugate:	This Cyclin A antibody is un-conjugated
Application:	Western Blotting (WB), Immunofluorescence (IF), Immunohistochemistry (Paraffin-embedded Sections) (IHC (p)), Immunoprecipitation (IP), Immunocytochemistry (ICC)

## Product Details

Immunogen:	Recombinant protein encompassing a sequence within the center region of human Cyclin A2. The exact sequence is proprietary.
Isotype:	IgG
Specificity:	IP/MS validation was supported by references (PMID:30377384)
Cross-Reactivity:	Human, Mouse, Rat
Characteristics:	Rabbit Polyclonal antibody to Cyclin A2 (cyclin A2) Cyclin A2 antibody
Purification:	Purified by antigen-affinity chromatography.
Grade:	KO Validated

## Target Details

Target:	Cyclin A (CCNA2)
Alternative Name:	cyclin A2 ( <a href="#">CCNA2 Products</a> )
Background:	<p>The protein encoded by this gene belongs to the highly conserved cyclin family, whose members are characterized by a dramatic periodicity in protein abundance through the cell cycle. Cyclins function as regulators of CDK kinases. Different cyclins exhibit distinct expression and degradation patterns which contribute to the temporal coordination of each mitotic event. In contrast to cyclin A1, which is present only in germ cells, this cyclin is expressed in all tissues tested. This cyclin binds and activates CDC2 or CDK2 kinases, and thus promotes both cell cycle G1/S and G2/M transitions.</p> <p>Cellular Localization: Nucleus , Cytoplasm</p>
Molecular Weight:	49 kDa
Gene ID:	890
UniProt:	<a href="#">P20248</a>
Pathways:	<a href="#">PI3K-Akt Signaling</a> , <a href="#">Cell Division Cycle</a> , <a href="#">AMPK Signaling</a> , <a href="#">Mitotic G1-G1/S Phases</a> , <a href="#">DNA Replication</a> , <a href="#">M Phase</a> , <a href="#">Synthesis of DNA</a>

## Application Details

Application Notes:	WB: 1:500-1:3000. ICC/IF: 1:100-1:1000. IHC-P: 1:100-1:1000. IP: 1:100-1:500. Optimal dilutions/concentrations should be determined by the researcher. Not tested in other applications.
Comment:	<p>Positive Control: Neuro2A , PC-12 , IMR32 , SK-N-AS , HeLa(100 µg/ml Bleomycin treatment for 24 hr)</p> <p>Validation: IP/MS, KO/KD, Orthogonal, Overexpression</p>
Restrictions:	For Research Use only

## Handling

Format:	Liquid
Concentration:	0.73 mg/mL
Buffer:	1XPBS ( pH 7), 20 % Glycerol, 0.025 % ProClin 300
Preservative:	ProClin

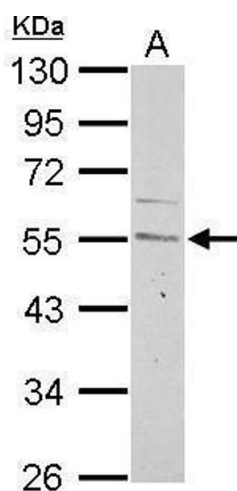
## Handling

Precaution of Use:	This product contains ProClin: a POISONOUS AND HAZARDOUS SUBSTANCE which should be handled by trained staff only.
Storage:	4 °C, -20 °C
Storage Comment:	Store as concentrated solution. Centrifuge briefly prior to opening vial. For short-term storage (1-2 weeks), store at 4°C. For long-term storage, aliquot and store at -20°C or below. Avoid multiple freeze-thaw cycles.

## Publications

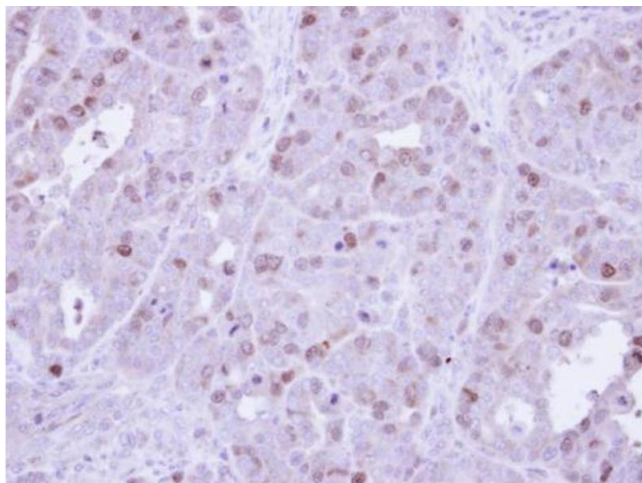
Product cited in:	Shirozu, Iwano, Ogiso, Suzuki, Balboula, Bai, Kawahara, Kimura, Takahashi, Rulan, Kim, Yanagawa, Nagano, Imakawa, Takahashi: "Estrous cycle stage-dependent manner of type I interferon-stimulated genes induction in the bovine endometrium." in: <b>The Journal of reproduction and development</b> , Vol. 63, Issue 3, pp. 211-220, (2018) ( <a href="#">PubMed</a> ).
-------------------	---

## Images



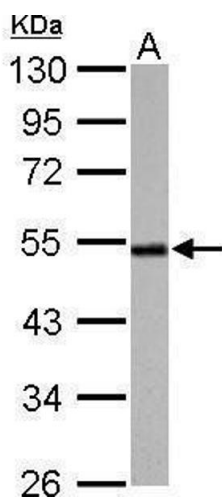
### Western Blotting

**Image 1.** WB Image Cyclin A2 antibody detects CCNA2 protein by Western blot analysis. A. 30 µg Neuro2A whole cell lysate/extract 10 % SDS-PAGE Cyclin A2 antibody , dilution: 1:1000



#### Immunohistochemistry

**Image 2.** IHC-P Image Immunohistochemical analysis of paraffin-embedded NCIN87 Xenograft, using cyclin A , antibody at 1:500 dilution.



#### Western Blotting

**Image 3.** WB Image Cyclin A2 antibody detects CCNA2 protein by Western blot analysis. A. 30 µg PC-12 whole cell lysate/extract 10 % SDS-PAGE Cyclin A2 antibody , dilution: 1:1000

Please check the [product details page](#) for more images. Overall 8 images are available for ABIN2855543.