

Datasheet for ABIN2855544
anti-Cyclin A antibody (C-Term)

3 Images

[Go to Product page](#)

Overview

Quantity:	100 µL
Target:	Cyclin A (CCNA2)
Binding Specificity:	C-Term
Reactivity:	Human, Mouse
Host:	Rabbit
Clonality:	Polyclonal
Conjugate:	This Cyclin A antibody is un-conjugated
Application:	Western Blotting (WB), Immunofluorescence (IF), Immunohistochemistry (Paraffin-embedded Sections) (IHC (p)), Immunocytochemistry (ICC)

Product Details

Immunogen:	Recombinant protein encompassing a sequence within the C-terminus region of human Cyclin A2. The exact sequence is proprietary.
Isotype:	IgG
Cross-Reactivity:	Chicken, Pig (Porcine), Rat (Rattus), Cow (Bovine)
Cross-Reactivity (Details):	Chicken (80 %), Pig (93 %), Rat (95 %), Bovine (94 %)
Characteristics:	Rabbit Polyclonal antibody to Cyclin A2 (cyclin-A2) Cyclin A2 antibody
Purification:	Purified by antigen-affinity chromatography.

Target Details

Target:	Cyclin A (CCNA2)
Alternative Name:	Cyclin A2 (CCNA2 Products)
Background:	<p>The protein encoded by this gene belongs to the highly conserved cyclin family, whose members are characterized by a dramatic periodicity in protein abundance through the cell cycle. Cyclins function as regulators of CDK kinases. Different cyclins exhibit distinct expression and degradation patterns which contribute to the temporal coordination of each mitotic event. In contrast to cyclin A1, which is present only in germ cells, this cyclin is expressed in all tissues tested. This cyclin binds and activates CDC2 or CDK2 kinases, and thus promotes both cell cycle G1/S and G2/M transitions.</p> <p>Cellular Localization: Nucleus , Cytoplasm</p>
Molecular Weight:	49 kDa
Gene ID:	890
Pathways:	PI3K-Akt Signaling , Cell Division Cycle , AMPK Signaling , Mitotic G1-G1/S Phases , DNA Replication , M Phase , Synthesis of DNA

Application Details

Application Notes:	<p>Suggested dilution Reference ICC/IF 1:100-1:1000* IHC (Formalin-fixed paraffin-embedded sections) 1:100-1:1000* Western blot 1:500-1:3000* Not tested in other applications. *Optimal dilutions/concentrations should be determined by the researcher.Suggested dilutionReferenceICC/IF1:100-1:1000* IHC (Formalin-fixed paraffin-embedded sections)1:100-1:1000* Western blot1:500-1:3000*</p>
Comment:	Positive Control: Mouse brain
Restrictions:	For Research Use only

Handling

Format:	Liquid
Concentration:	1 mg/mL
Buffer:	0.1M Tris, 0.1M Glycine, 10 % Glycerol (pH 7). 0.01 % Thimerosal was added as a preservative.
Preservative:	Thimerosal (Merthiolate)
Precaution of Use:	This product contains Thimerosal (Merthiolate): a POISONOUS AND HAZARDOUS SUBSTANCE

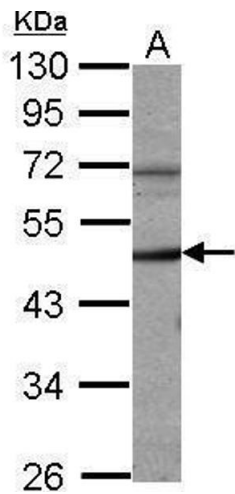
Handling

which should be handled by trained staff only.

Storage: -20 °C

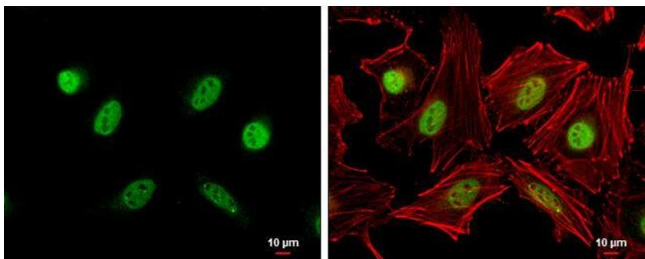
Storage Comment: Keep as concentrated solution. Aliquot and store at -20°C or below. Avoid multiple freeze-thaw cycles.

Validation report #103867 for Immunohistochemistry (IHC)



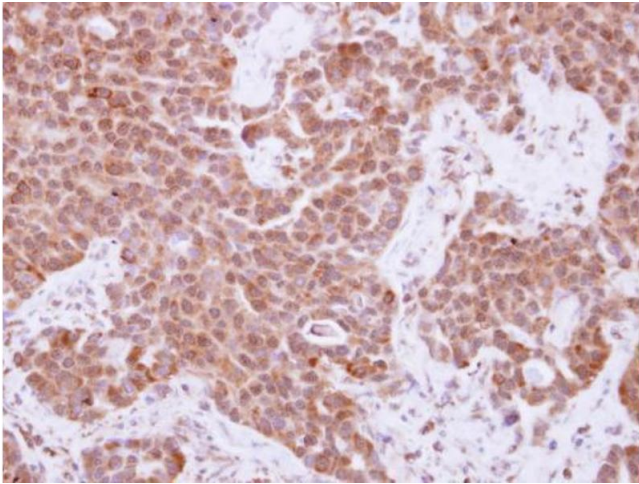
Western Blotting

Image 1. WB Image Sample (50 ug of whole cell lysate) A: Mouse brain 10% SDS PAGE antibody diluted at 1:1000



Immunofluorescence

Image 2. ICC/IF Image Cyclin A2 antibody detects Cyclin A2 protein at nucleus by immunofluorescent analysis. Sample: HeLa cells were fixed in 4% paraformaldehyde at RT for 15 min. Green: Cyclin A2 protein stained by Cyclin A2 antibody, diluted at 1:500. Red: phalloidin, a cytoskeleton marker, diluted at 1:200. Scale bar = 10 µm.



Immunohistochemistry

Image 3. IHC-P Image Immunohistochemical analysis of paraffin-embedded human lung adenocarcinoma, using Cyclin A2, antibody at 1:250 dilution.