

Datasheet for ABIN2855548

**anti-GLMN antibody****3** Images[Go to Product page](#)

## Overview

Quantity:	100 µL
Target:	GLMN
Reactivity:	Human
Host:	Rabbit
Clonality:	Polyclonal
Conjugate:	This GLMN antibody is un-conjugated
Application:	Western Blotting (WB), Immunohistochemistry (Paraffin-embedded Sections) (IHC (p)), Immunofluorescence (IF), Immunocytochemistry (ICC)

## Product Details

Immunogen:	Recombinant protein encompassing a sequence within the center region of human GLMN. The exact sequence is proprietary.
Isotype:	IgG
Cross-Reactivity:	Human, Mouse, Rat
Characteristics:	Rabbit Polyclonal antibody to GLMN (glomulin, FKBP associated protein) GLMN antibody
Purification:	Purified by antigen-affinity chromatography.

## Target Details

Target:	GLMN
Alternative Name:	glomulin, FKBP associated protein ( <a href="#">GLMN Products</a> )

## Target Details

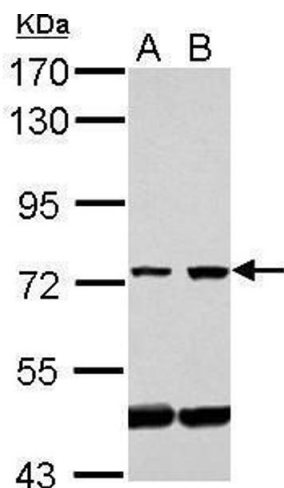
Background:	This gene encodes a phosphorylated protein that is a member of a Skp1-Cullin-F-box-like complex. The protein is essential for normal development of the vasculature and mutations in this gene have been associated with glomuvenous malformations, also called glomangiomas. Alternatively spliced variants that encode different protein isoforms have been described but the full-length nature of only one has been determined.
Molecular Weight:	68 kDa
Gene ID:	11146
UniProt:	<a href="#">Q92990</a>
Pathways:	<a href="#">Tube Formation</a>

## Application Details

Application Notes:	WB: 1:5000-1:20000. ICC/IF: 1:100-1:1000. IHC-P: 1:100-1:1000. Optimal dilutions/concentrations should be determined by the researcher. Not tested in other applications.
Comment:	Positive Control: NIH-3T3 , Jurkat , Raji , NCI-H929
Restrictions:	For Research Use only

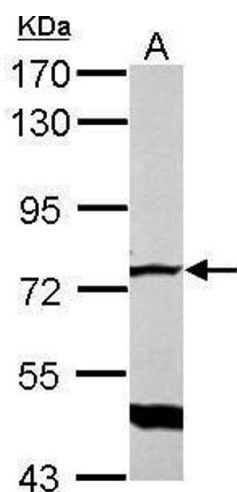
## Handling

Format:	Liquid
Concentration:	0.23 mg/mL
Buffer:	1XPBS ( pH 7), 1 % BSA, 20 % Glycerol, 0.025 % ProClin 300
Preservative:	ProClin
Precaution of Use:	This product contains ProClin: a POISONOUS AND HAZARDOUS SUBSTANCE which should be handled by trained staff only.
Storage:	4 °C,-20 °C
Storage Comment:	Store as concentrated solution. Centrifuge briefly prior to opening vial. For short-term storage (1-2 weeks), store at 4°C. For long-term storage, aliquot and store at -20°C or below. Avoid multiple freeze-thaw cycles.



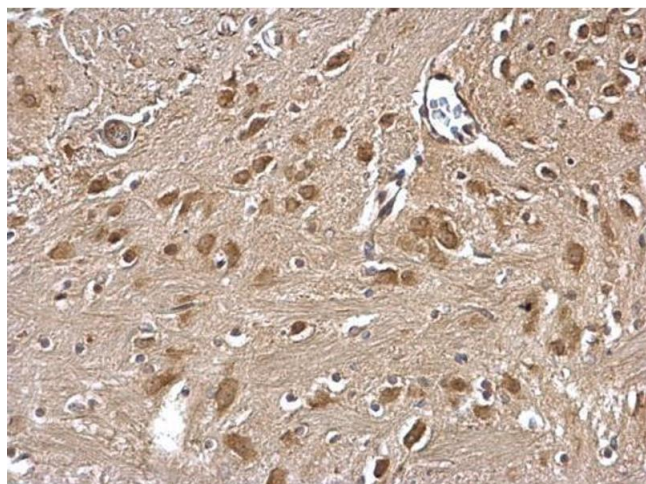
Western Blotting

**Image 1.** WB Image Sample (30 ug of whole cell lysate) A: Jurkat B: Raji 7.5% SDS PAGE antibody diluted at 1:10000



Western Blotting

**Image 2.** WB Image Sample (30 ug of whole cell lysate) A: NIH-3T3 7.5% SDS PAGE antibody diluted at 1:10000



Immunohistochemistry

**Image 3.** IHC-P Image GLMN antibody detects GLMN protein at cytosol on mouse fore brain by immunohistochemical analysis. Sample: Paraffin-embedded mouse fore brain. GLMN antibody , dilution: 1:500.