

Datasheet for ABIN2855549

anti-STIP1 antibody

4 Images

[Go to Product page](#)

Overview

Quantity:	100 µL
Target:	STIP1
Reactivity:	Human
Host:	Rabbit
Clonality:	Polyclonal
Conjugate:	This STIP1 antibody is un-conjugated
Application:	Western Blotting (WB), Immunofluorescence (IF), Immunoprecipitation (IP), Immunohistochemistry (Paraffin-embedded Sections) (IHC (p)), Immunocytochemistry (ICC)

Product Details

Immunogen:	Recombinant protein encompassing a sequence within the center region of human STIP1. The exact sequence is proprietary.
Isotype:	IgG
Cross-Reactivity:	Human, Mouse, Rat
Characteristics:	Rabbit Polyclonal antibody to STIP1 (stress-induced-phosphoprotein 1) STIP1 antibody
Purification:	Purified by antigen-affinity chromatography.

Target Details

Target:	STIP1
Alternative Name:	stress induced phosphoprotein 1 (STIP1 Products)

Target Details

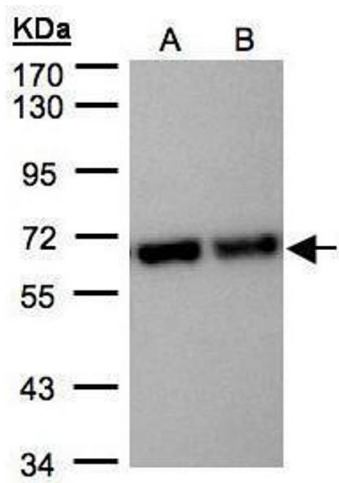
Background:	STIP1 is an adaptor protein that coordinates the functions of HSP70 (see HSPA1A, MIM 140550) and HSP90 (see HSP90AA1, MIM 140571) in protein folding. It is thought to assist in the transfer of proteins from HSP70 to HSP90 by binding both HSP90 and substrate-bound HSP70. STIP1 also stimulates the ATPase activity of HSP70 and inhibits the ATPase activity of HSP90, suggesting that it regulates both the conformations and ATPase cycles of these chaperones (Song and Masison, 2005 [PubMed 16100115]).[supplied by OMIM] Cellular Localization: Cytoplasm (By similarity) , Nucleus
Molecular Weight:	63 kDa
Gene ID:	10963
UniProt:	P31948

Application Details

Application Notes:	WB: 1:1000-1:10000. ICC/IF: 1:100-1:1000. IHC-P: 1:100-1:1000. Optimal dilutions/concentrations should be determined by the researcher. Not tested in other applications.
Comment:	Positive Control: Neuro2A , GL261 , C8D30 , NIH-3T3 , BCL-1 , Raw264.7 , C2C12 , HepG2 , Molt-4
Restrictions:	For Research Use only

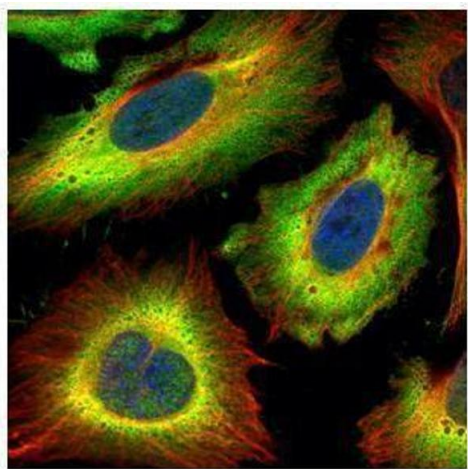
Handling

Format:	Liquid
Concentration:	1 mg/mL
Buffer:	0.1M Tris-Glycine (pH 7), 10 % Glycerol, 0.01 % Thimerosal
Preservative:	Thimerosal (Merthiolate)
Precaution of Use:	This product contains Thimerosal (Merthiolate): a POISONOUS AND HAZARDOUS SUBSTANCE which should be handled by trained staff only.
Storage:	4 °C, -20 °C
Storage Comment:	Store as concentrated solution. Centrifuge briefly prior to opening vial. For short-term storage (1-2 weeks), store at 4°C. For long-term storage, aliquot and store at -20°C or below. Avoid multiple freeze-thaw cycles.



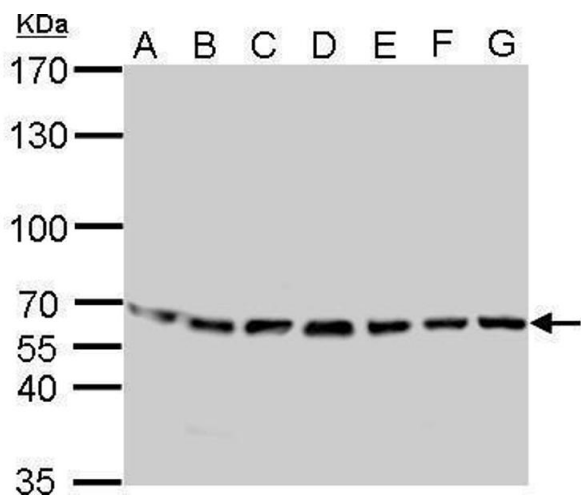
Western Blotting

Image 1. WB Image Sample(30 µg of whole cell lysate)
A:Hep G2, B:MOLT4, 7.5% SDS PAGE antibody diluted at 1:5000



Immunofluorescence

Image 2. ICC/IF Image Confocal immunofluorescence analysis (Olympus FV10i) of paraformaldehyde-fixed HeLa, using STIP1, antibody (Green) at 1:500 dilution. Alpha-tubulin filaments were labeled with (Red) at 1:2000.



Western Blotting

Image 3. WB Image STIP1 antibody detects STIP1 protein by Western blot analysis. A. 30 µg Neuro2A whole cell lysate/extract B. 30 µg GL261 whole cell lysate/extract C. 30 µg C8D30 whole cell lysate/extract D. 30 µg NIH-3T3 whole cell lysate/extract E. 30 µg BCL-1 whole cell lysate/extract F. 30 µg Raw264.7 whole cell lysate/extract G. 30 µg C2C12 whole cell lysate/extract 7.5 % SDS-PAGE STIP1 antibody , dilution: 1:1000

Please check the [product details page](#) for more images. Overall 4 images are available for ABIN2855549.