

Datasheet for ABIN2855550  
**anti-MCM2 antibody (N-Term)**

2 Images



[Go to Product page](#)

## Overview

Quantity:	100 µL
Target:	MCM2
Binding Specificity:	N-Term
Reactivity:	Human
Host:	Rabbit
Clonality:	Polyclonal
Conjugate:	This MCM2 antibody is un-conjugated
Application:	Western Blotting (WB), Immunofluorescence (IF), Immunocytochemistry (ICC), Immunoprecipitation (IP)

## Product Details

Immunogen:	Recombinant protein encompassing a sequence within the N-terminus region of human MCM2. The exact sequence is proprietary.
Isotype:	IgG
Specificity:	IP/MS validation was supported by references (PMID:30377385)
Cross-Reactivity:	Human
Characteristics:	Rabbit Polyclonal antibody to MCM2 (minichromosome maintenance complex component 2) MCM2 antibody [N1N2], N-term
Purification:	Purified by antigen-affinity chromatography.

## Target Details

Target:	MCM2
Alternative Name:	minichromosome maintenance complex component 2 ( <a href="#">MCM2 Products</a> )
Background:	<p>The protein encoded by this gene is one of the highly conserved mini-chromosome maintenance proteins (MCM) that are involved in the initiation of eukaryotic genome replication. The hexameric protein complex formed by MCM proteins is a key component of the pre-replication complex (pre_RC) and may be involved in the formation of replication forks and in the recruitment of other DNA replication related proteins. This protein forms a complex with MCM4, 6, and 7, and has been shown to regulate the helicase activity of the complex. This protein is phosphorylated, and thus regulated by, protein kinases CDC2 and CDC7.</p>
Molecular Weight:	102 kDa
Gene ID:	4171
UniProt:	<a href="#">P49736</a>
Pathways:	<a href="#">DNA Damage Repair</a> , <a href="#">Mitotic G1-G1/S Phases</a> , <a href="#">DNA Replication</a> , <a href="#">Chromatin Binding</a> , <a href="#">Synthesis of DNA</a>

## Application Details

Application Notes:	WB: 1:500-1:3000. ICC/IF: 1:100-1:1000. IP: 1:100-1:500. Optimal dilutions/concentrations should be determined by the researcher. Not tested in other applications.
Comment:	Positive Control: HCT116 Validation: IP/MS
Restrictions:	For Research Use only

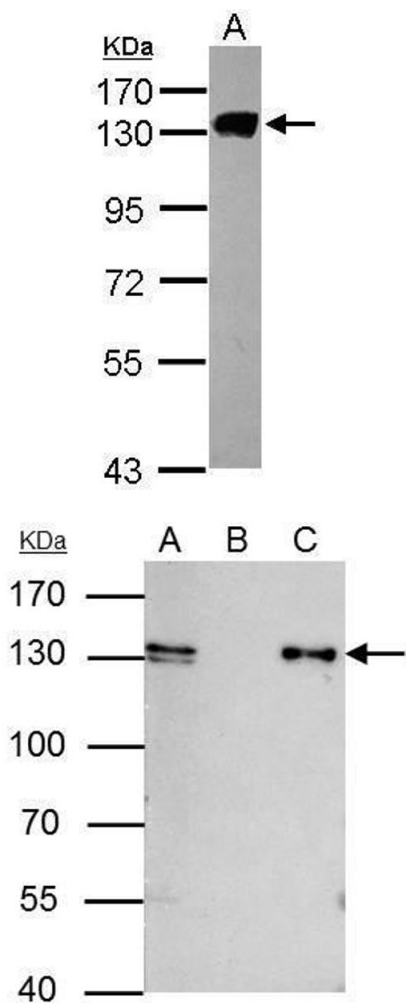
## Handling

Format:	Liquid
Concentration:	1 mg/mL
Buffer:	1XPBS ( pH 7), 1 % BSA, 20 % Glycerol, 0.01 % Thimerosal
Preservative:	Thimerosal (Merthiolate)
Precaution of Use:	This product contains Thimerosal (Merthiolate): a POISONOUS AND HAZARDOUS SUBSTANCE which should be handled by trained staff only.

Handling

Storage:	4 °C,-20 °C
Storage Comment:	Store as concentrated solution. Centrifuge briefly prior to opening vial. For short-term storage (1-2 weeks), store at 4°C. For long-term storage, aliquot and store at -20°C or below. Avoid multiple freeze-thaw cycles.

Images



Western Blotting

**Image 1.** WB Image Sample (30 ug of whole cell lysate) A: HCT116 7.5% SDS PAGE antibody diluted at 1:1000

Immunoprecipitation

**Image 2.** IP Image MCM2 antibody [N1N2], N-term immunoprecipitates MCM2 protein in IP experiments. IP samples: HCT-116 whole cell extract A. 40 µg HCT-116 whole cell extract B. Control with 4 µg of preimmune Rabbit IgG C. Immunoprecipitation of MCM2 protein by 4 µg MCM2 antibody [N1N2], N-term , 7.5 % SDS-PAGE The immunoprecipitated MCM2 protein was detected by MCM2 antibody [N1N2], N-term , diluted at 1:500. [EasyBlot anti-rabbit IgG was used as a secondary reagent]