

Datasheet for ABIN2855551  
**anti-NDUFA10 antibody (Center)**

## 3 Images

[Go to Product page](#)

## Overview

Quantity:	100 µL
Target:	NDUFA10
Binding Specificity:	Center
Reactivity:	Human
Host:	Rabbit
Clonality:	Polyclonal
Conjugate:	This NDUFA10 antibody is un-conjugated
Application:	Western Blotting (WB), Immunohistochemistry (Paraffin-embedded Sections) (IHC (p)), Immunocytochemistry (ICC), Immunofluorescence (IF)

## Product Details

Immunogen:	Recombinant protein encompassing a sequence within the center region of human NDUFA10. The exact sequence is proprietary.
Isotype:	IgG
Cross-Reactivity:	Cow (Bovine)
Cross-Reactivity (Details):	Bovine (82 %)
Characteristics:	Rabbit Polyclonal antibody to NDUFA10 (NADH dehydrogenase (ubiquinone) 1 alpha subcomplex, 10, 42 kDa) NDUFA10 antibody [N1C3]
Purification:	Purified by antigen-affinity chromatography.

## Target Details

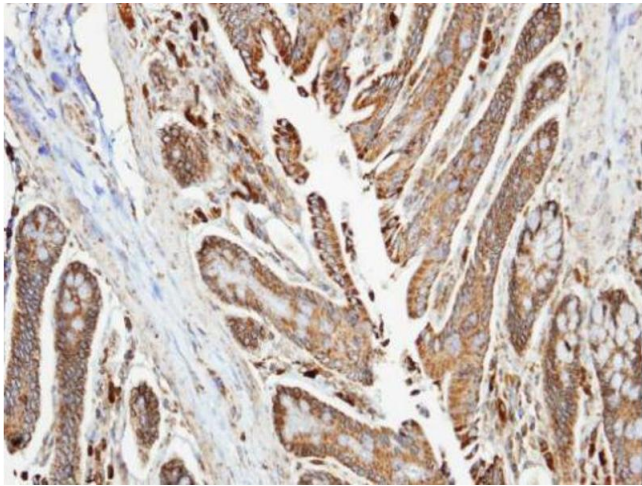
Target:	NDUFA10
Alternative Name:	NDUFA10 ( <a href="#">NDUFA10 Products</a> )
Background:	<p>The protein encoded by this gene belongs to the complex I 42kDA subunit family. Mammalian complex I is the first enzyme complex in the electron transport chain of mitochondria. It is composed of 45 different subunits. This protein is a component of the hydrophobic protein fraction and has NADH dehydrogenase activity and oxidoreductase activity. It transfers electrons from NADH to the respiratory chain.</p> <p>Cellular Localization: Mitochondrion matrix</p>
Molecular Weight:	41 kDa
Gene ID:	4705

## Application Details

Application Notes:	<p>Suggested dilution Reference ICC/IF 1:100-1:1000* IHC (Formalin-fixed paraffin-embedded sections) 1:100-1:1000* Western blot 1:500-1:3000* Not tested in other applications. *Optimal dilutions/concentrations should be determined by the researcher.Suggested dilutionReferenceICC/IF1:100-1:1000* IHC (Formalin-fixed paraffin-embedded sections)1:100-1:1000* Western blot1:500-1:3000*</p>
Comment:	Positive Control: 293T , A431 , H1299 , HeLaS3 , HepG2 , Molt-4 , Raji
Restrictions:	For Research Use only

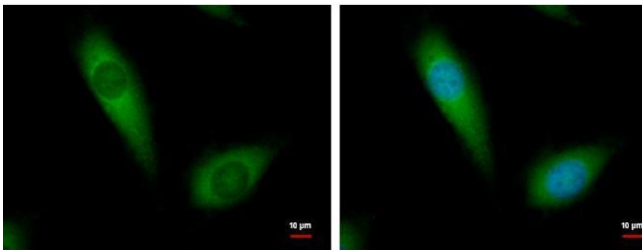
## Handling

Format:	Liquid
Concentration:	0.82 mg/mL
Buffer:	0.1M Tris, 0.1M Glycine, 10 % Glycerol ( pH 7). 0.01 % Thimerosal was added as a preservative.
Preservative:	Thimerosal (Merthiolate)
Precaution of Use:	This product contains Thimerosal (Merthiolate): a POISONOUS AND HAZARDOUS SUBSTANCE which should be handled by trained staff only.
Storage:	-20 °C
Storage Comment:	Keep as concentrated solution. Aliquot and store at -20°C or below. Avoid multiple freeze-thaw cycles.



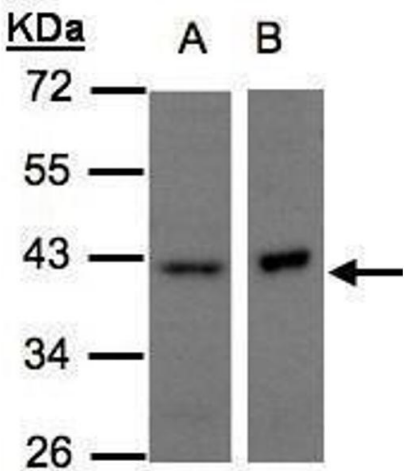
Immunohistochemistry

**Image 1.** IHC-P Image Immunohistochemical analysis of paraffin-embedded human colon , using NDUFA10, antibody at 1:100 dilution.



Immunofluorescence

**Image 2.** ICC/IF Image NDUFA10 antibody [N1C3] detects NDUFA10 protein at cytoplasm by immunofluorescent analysis. Sample: HeLa cells were fixed in 2% paraformaldehyde/culture medium at 37°C for 30 min. *Green: NDUFA10 protein stained by NDUFA10 antibody [N1C3] ,diluted at 1:500. Blue: Hoechst 33342 staining.*



Western Blotting

**Image 3.** WB Image Sample(30 µg of whole cell lysate) A:H1299 B:Raji, 10% SDS PAGE antibody diluted at 1:500