

Datasheet for ABIN2855552

anti-IFNGR1 antibody**2** Images[Go to Product page](#)

Overview

Quantity:	100 µL
Target:	IFNGR1
Reactivity:	Human
Host:	Rabbit
Clonality:	Polyclonal
Conjugate:	This IFNGR1 antibody is un-conjugated
Application:	Western Blotting (WB), Immunofluorescence (IF), Immunohistochemistry (Paraffin-embedded Sections) (IHC (p)), Immunocytochemistry (ICC)

Product Details

Immunogen:	Recombinant protein encompassing a sequence within the center region of human Interferon gamma Receptor 1. The exact sequence is proprietary.
Isotype:	IgG
Cross-Reactivity:	Human
Characteristics:	Rabbit Polyclonal antibody to Interferon gamma Receptor 1 (interferon gamma receptor 1) Interferon gamma Receptor 1 antibody
Purification:	Purified by antigen-affinity chromatography.
Grade:	KO Validated

Target Details

Target:	IFNGR1
---------	--------

Target Details

Alternative Name:	interferon gamma receptor 1 (IFNGR1 Products)
Background:	<p>This gene (IFNGR1) encodes the ligand-binding chain (alpha) of the gamma interferon receptor. Human interferon-gamma receptor is a heterodimer of IFNGR1 and IFNGR2. A genetic variation in IFNGR1 is associated with susceptibility to Helicobacter pylori infection. In addition, defects in IFNGR1 are a cause of mendelian susceptibility to mycobacterial disease, also known as familial disseminated atypical mycobacterial infection.</p> <p>Cellular Localization: Membrane, Single-pass type I membrane protein</p>
Molecular Weight:	54 kDa
Gene ID:	3459
UniProt:	P15260
Pathways:	Interferon-gamma Pathway

Application Details

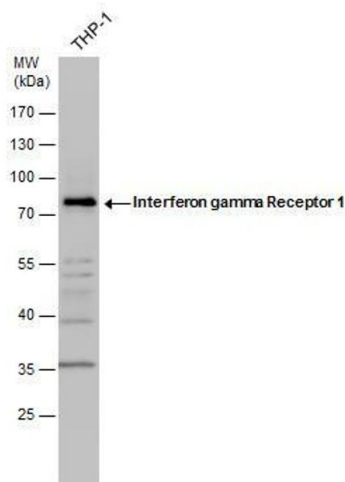
Application Notes:	WB: 1:500-1:3000. IHC-P: 1:100-1:1000. Optimal dilutions/concentrations should be determined by the researcher. Not tested in other applications.
Comment:	Positive Control: THP-1 , HeLa Validation: KO/KD, Orthogonal
Restrictions:	For Research Use only

Handling

Format:	Liquid
Concentration:	0.5 mg/mL
Buffer:	1XPBS (pH 7), 20 % Glycerol, 0.025 % ProClin 300
Preservative:	ProClin
Precaution of Use:	This product contains ProClin: a POISONOUS AND HAZARDOUS SUBSTANCE which should be handled by trained staff only.
Storage:	4 °C,-20 °C
Storage Comment:	Store as concentrated solution. Centrifuge briefly prior to opening vial. For short-term storage (1-2 weeks), store at 4°C. For long-term storage, aliquot and store at -20°C or below. Avoid

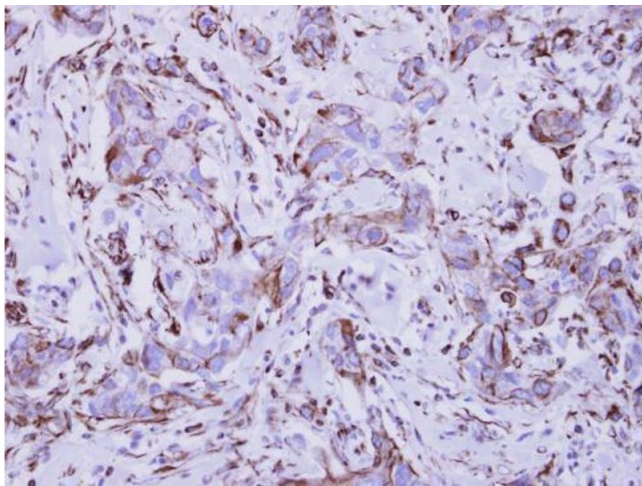
multiple freeze-thaw cycles.

Validation report #104394 for Cleavage Under Targets and Release Using Nuclease (CUT&RUN)



Western Blotting

Image 1. WB Image Interferon gamma Receptor 1 antibody detects Interferon gamma Receptor 1 protein by western blot analysis. Whole cell extracts (30 µg) was separated by 10% SDS-PAGE, and the membrane was blotted with Interferon gamma Receptor 1 antibody , diluted by 1:1000.



Immunohistochemistry

Image 2. IHC-P Image Immunohistochemical analysis of paraffin-embedded human breast cancer, using Interferon gamma Receptor 1, antibody at 1:250 dilution.