

Datasheet for ABIN2855554
anti-LILRA4 antibody (Center)[Go to Product page](#)

1 Image

Overview

Quantity:	100 µL
Target:	LILRA4
Binding Specificity:	Center
Reactivity:	Human
Host:	Rabbit
Clonality:	Polyclonal
Conjugate:	This LILRA4 antibody is un-conjugated
Application:	Western Blotting (WB)

Product Details

Immunogen:	Recombinant protein encompassing a sequence within the center region of human LILRA4. The exact sequence is proprietary.
Isotype:	IgG
Characteristics:	Rabbit polyclonal antibody to ILT7 (leukocyte immunoglobulin-like receptor, subfamily A (with TM domain), member 4) LILRA4 antibody [N3C3]
Purification:	Purified by antigen-affinity chromatography.

Target Details

Target:	LILRA4
Alternative Name:	LILRA4 (LILRA4 Products)

Target Details

Background: This gene encodes an immunoglobulin-like cell surface protein preferentially expressed in plasmacytoid dendritic cells (PDCs). This gene is highly expressed in PDCs, and is found to be rapidly down-regulated by interleukin 3 (IL3). This gene is one of the 19 highly related genes that form a leukocyte receptor gene cluster (LRC) at chromosomal region 19q13.4.

Cellular Localization: Membrane, Single-pass type I membrane protein

Molecular Weight: 55 kDa

Gene ID: 23547

Application Details

Application Notes: Suggested dilution Reference Western blot 1:1000-1:10000* Not tested in other applications.
Optimal dilutions/concentrations should be determined by the researcher.Suggested dilutionReferenceWestern blot1:1000-1:10000

Comment: Positive Control: THP-1

Restrictions: For Research Use only

Handling

Format: Liquid

Concentration: 1 mg/mL

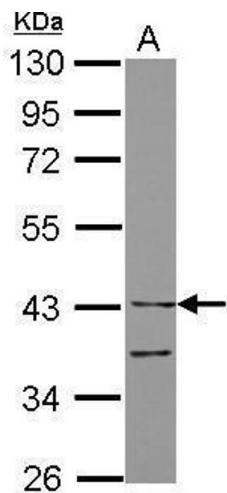
Buffer: 0.1M Tris, 0.1M Glycine, 10 % Glycerol (pH 7). 0.01 % Thimerosal was added as a preservative.

Preservative: Thimerosal (Merthiolate)

Precaution of Use: This product contains Thimerosal (Merthiolate): a POISONOUS AND HAZARDOUS SUBSTANCE which should be handled by trained staff only.

Storage: -20 °C

Storage Comment: Keep as concentrated solution. Aliquot and store at -20°C or below. Avoid multiple freeze-thaw cycles.



Western Blotting

Image 1. WB Image Sample (30 ug of whole cell lysate) A:
THP-1 10% SDS PAGE antibody diluted at 1:10000