

Datasheet for ABIN2855555  
**anti-OCRL antibody (C-Term)**

## 3 Images

[Go to Product page](#)

## Overview

Quantity:	100 µL
Target:	OCRL
Binding Specificity:	C-Term
Reactivity:	Human
Host:	Rabbit
Clonality:	Polyclonal
Conjugate:	This OCRL antibody is un-conjugated
Application:	Western Blotting (WB), Immunohistochemistry (Paraffin-embedded Sections) (IHC (p)), Immunocytochemistry (ICC), Immunofluorescence (IF)

## Product Details

Immunogen:	Recombinant protein encompassing a sequence within the C-terminus region of human INPP5F. The exact sequence is proprietary.
Isotype:	IgG
Cross-Reactivity:	Human
Characteristics:	Rabbit Polyclonal antibody to OCRL (oculocerebrorenal syndrome of Lowe) OCRL antibody
Purification:	Purified by antigen-affinity chromatography.

## Target Details

Target:	OCRL
---------	------

## Target Details

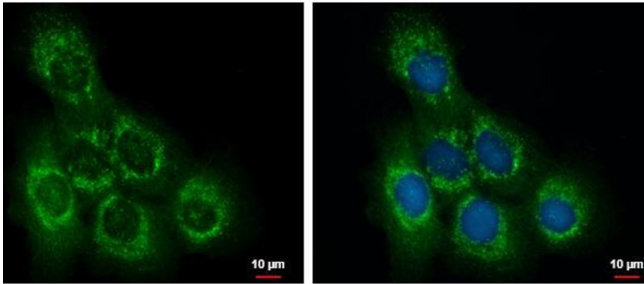
Alternative Name:	OCRL inositol polyphosphate-5-phosphatase ( <a href="#">OCRL Products</a> )
Background:	This gene encodes a phosphatase enzyme that is involved in actin polymerization and is found in the trans-Golgi network. Mutations in this gene cause oculocerebrorenal syndrome of Lowe and also Dent disease.
Molecular Weight:	104 kDa
Gene ID:	4952
UniProt:	<a href="#">Q01968</a>
Pathways:	<a href="#">Inositol Metabolic Process</a>

## Application Details

Application Notes:	WB: 1:500-1:3000. ICC/IF: 1:100-1:1000. IHC-P: 1:100-1:1000. Optimal dilutions/concentrations should be determined by the researcher. Not tested in other applications.
Comment:	Positive Control: 293T, A431
Restrictions:	For Research Use only

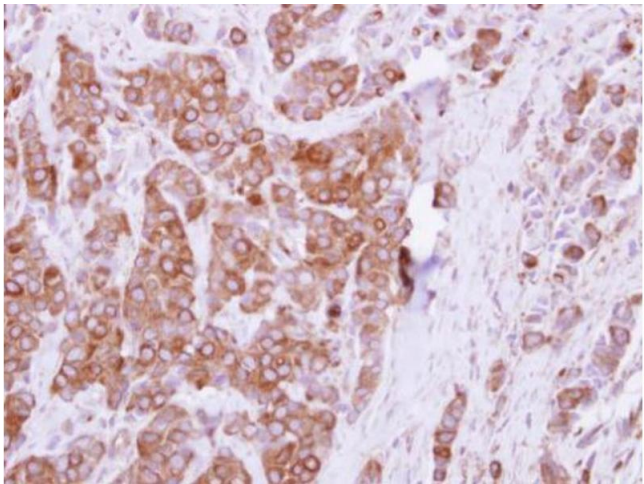
## Handling

Format:	Liquid
Concentration:	1 mg/mL
Buffer:	0.1M Tris-Glycine ( pH 7), 20 % Glycerol, 0.01 % Thimerosal
Preservative:	Thimerosal (Merthiolate)
Precaution of Use:	This product contains Thimerosal (Merthiolate): a POISONOUS AND HAZARDOUS SUBSTANCE which should be handled by trained staff only.
Storage:	4 °C, -20 °C
Storage Comment:	Store as concentrated solution. Centrifuge briefly prior to opening vial. For short-term storage (1-2 weeks), store at 4°C. For long-term storage, aliquot and store at -20°C or below. Avoid multiple freeze-thaw cycles.



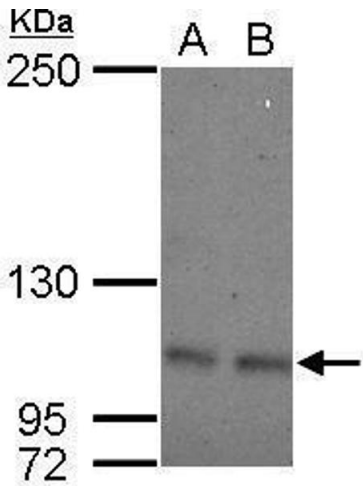
Immunofluorescence

**Image 1.** ICC/IF Image OCRL antibody detects OCRL protein at cytoplasm by immunofluorescent analysis. Sample: A431 cells were fixed in ice-cold MeOH for 5 min. Green: OCRL protein stained by OCRL antibody , diluted at 1:500. Blue: Hoechst 33342 staining.



Immunohistochemistry

**Image 2.** IHC-P Image Immunohistochemical analysis of paraffin-embedded human breast cancer, using OCRL, antibody at 1:250 dilution.



Western Blotting

**Image 3.** WB Image Sample (30 ug of whole cell lysate) A: 293T B: A431 5% SDS PAGE antibody diluted at 1:500