

Datasheet for ABIN2855556

anti-STXBP2 antibody**2** Images[Go to Product page](#)

Overview

Quantity:	100 µL
Target:	STXBP2
Reactivity:	Human
Host:	Rabbit
Clonality:	Polyclonal
Conjugate:	This STXBP2 antibody is un-conjugated
Application:	Western Blotting (WB), Immunofluorescence (IF), Immunocytochemistry (ICC)

Product Details

Immunogen:	Recombinant protein encompassing a sequence within the center region of human STXBP2. The exact sequence is proprietary.
Isotype:	IgG
Cross-Reactivity:	Human
Characteristics:	Rabbit Polyclonal antibody to STXBP2 (syntaxin binding protein 2) STXBP2 antibody [N2C1], Internal
Purification:	Purified by antigen-affinity chromatography.

Target Details

Target:	STXBP2
Alternative Name:	syntaxin binding protein 2 (STXBP2 Products)

Target Details

Background: This gene encodes a member of the STXBP/unc-18/SEC1 family. These genes are conserved across species from yeast to man, and are believed to be involved in protein trafficking from the golgi apparatus to the plasma membrane. Mutations in this gene are associated with familial hemophagocytic lymphohistiocytosis. Alternatively spliced transcript variants encoding different isoforms have been noted for this gene.

Molecular Weight: 66 kDa

Gene ID: 6813

UniProt: [Q15833](#)

Pathways: [Regulation of Leukocyte Mediated Immunity](#), [Positive Regulation of Immune Effector Process](#), [Synaptic Vesicle Exocytosis](#)

Application Details

Application Notes: WB: 1:500-1:3000. ICC/IF: 1:100-1:1000. Optimal dilutions/concentrations should be determined by the researcher. Not tested in other applications.

Comment: Positive Control: HCT116

Restrictions: For Research Use only

Handling

Format: Liquid

Concentration: 0.51 mg/mL

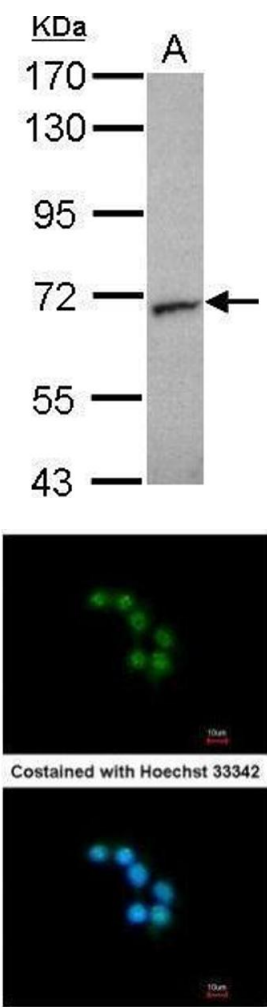
Buffer: 0.1M Tris-Glycine (pH 7), 10 % Glycerol, 0.01 % Thimerosal

Preservative: Thimerosal (Merthiolate)

Precaution of Use: This product contains Thimerosal (Merthiolate): a POISONOUS AND HAZARDOUS SUBSTANCE which should be handled by trained staff only.

Storage: 4 °C,-20 °C

Storage Comment: Store as concentrated solution. Centrifuge briefly prior to opening vial. For short-term storage (1-2 weeks), store at 4°C. For long-term storage, aliquot and store at -20°C or below. Avoid multiple freeze-thaw cycles.



Western Blotting

Image 1. WB Image Sample (30 ug of whole cell lysate) A:
HCT116 7.5% SDS PAGE antibody diluted at 1:1000

Immunofluorescence

Image 2. ICC/IF Image Immunofluorescence analysis of
methanol-fixed HepG2, using STXBP2, antibody at 1:200
dilution.