

Datasheet for ABIN2855557
anti-TAF15 antibody (Center)

4 Images

[Go to Product page](#)

Overview

Quantity:	100 µL
Target:	TAF15
Binding Specificity:	Center
Reactivity:	Human, Mouse
Host:	Rabbit
Clonality:	Polyclonal
Conjugate:	This TAF15 antibody is un-conjugated
Application:	Western Blotting (WB), Immunofluorescence (IF), Immunohistochemistry (Paraffin-embedded Sections) (IHC (p)), Immunocytochemistry (ICC)

Product Details

Immunogen:	Recombinant protein encompassing a sequence within the center region of human TAFII68. The exact sequence is proprietary.
Isotype:	IgG
Cross-Reactivity:	Rat (Rattus)
Cross-Reactivity (Details):	Rat (95 %)
Characteristics:	Rabbit Polyclonal antibody to TAFII68 (TAF15 RNA polymerase II, TATA box binding protein (TBP)-associated factor, 68 kDa) TAFII68 antibody [N1N3]
Purification:	Purified by antigen-affinity chromatography.

Target Details

Target:	TAF15
Alternative Name:	TAFII68 (TAF15 Products)
Background:	Initiation of transcription by RNA polymerase II requires the activities of more than 70 polypeptides. The protein that coordinates these activities is transcription factor IID (TFIID), which binds to the core promoter to position the polymerase properly, serves as the scaffold for assembly of the remainder of the transcription complex, and acts as a channel for regulatory signals. TFIID is composed of the TATA-binding protein (TBP) and a group of evolutionarily conserved proteins known as TBP-associated factors or TAFs. TAFs may participate in basal transcription, serve as coactivators, function in promoter recognition or modify general transcription factors (GTFs) to facilitate complex assembly and transcription initiation. This gene encodes a subunit of TFIID present in a subset of TFIID complexes. Translocations involving chromosome 17 and chromosome 9, where the gene for the nuclear receptor CSMF is located, result in a gene fusion product that is an RNA binding protein associated with a subset of extraskeletal myxoid chondrosarcomas. Two transcripts encoding different isoforms have been identified.
Molecular Weight:	62 kDa
Gene ID:	8148

Application Details

Application Notes:	Suggested dilution Reference ICC/IF 1:100-1:1000* IHC (Formalin-fixed paraffin-embedded sections) 1:100-1:1000* Western blot 1:500-1:3000* Not tested in other applications. *Optimal dilutions/concentrations should be determined by the researcher.Suggested dilutionReference ICC/IF1:100-1:1000* IHC (Formalin-fixed paraffin-embedded sections)1:100-1:1000* Western blot1:500-1:3000*
Comment:	Positive Control: 293T , A431 , H1299 , HeLaS3 , HepG2 , Molt-4 , Raji , NIH-3T3
Restrictions:	For Research Use only

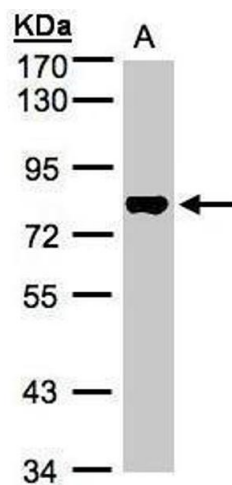
Handling

Format:	Liquid
Concentration:	1 mg/mL
Buffer:	0.1M Tris, 0.1M Glycine, 10 % Glycerol (pH 7). 0.01 % Thimerosal was added as a preservative.

Handling

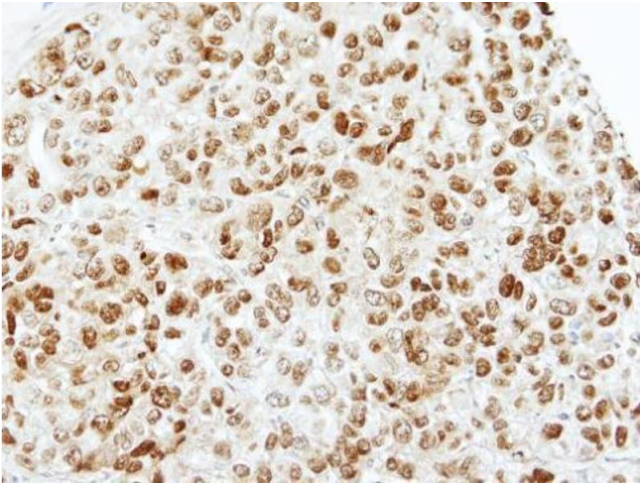
Preservative:	Thimerosal (Merthiolate)
Precaution of Use:	This product contains Thimerosal (Merthiolate): a POISONOUS AND HAZARDOUS SUBSTANCE which should be handled by trained staff only.
Storage:	-20 °C
Storage Comment:	Keep as concentrated solution. Aliquot and store at -20°C or below. Avoid multiple freeze-thaw cycles.

Validation report #104394 for Cleavage Under Targets and Release Using Nuclease (CUT&RUN)



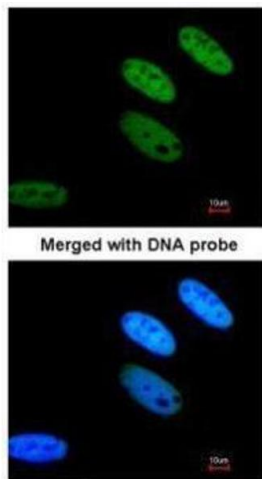
Western Blotting

Image 1. WB Image Sample(30 ug whole cell lysate) A:Raji , 7.5% SDS PAGE antibody diluted at 1:1000



Immunohistochemistry

Image 2. IHC-P Image Immunohistochemical analysis of paraffin-embedded CL1-0 xenograft, using TAFII68, antibody at 1:100 dilution.



Immunofluorescence

Image 3. ICC/IF Image Immunofluorescence analysis of paraformaldehyde-fixed HeLa, using TAFII68 , antibody at 1:200 dilution.

Please check the [product details page](#) for more images. Overall 4 images are available for ABIN2855557.