

Datasheet for ABIN2855558  
**anti-STAT2 antibody (C-Term)**

## 4 Images

[Go to Product page](#)

## Overview

Quantity:	100 µL
Target:	STAT2
Binding Specificity:	C-Term
Reactivity:	Human
Host:	Rabbit
Clonality:	Polyclonal
Conjugate:	This STAT2 antibody is un-conjugated
Application:	Western Blotting (WB), Immunohistochemistry (Paraffin-embedded Sections) (IHC (p)), Immunoprecipitation (IP)

## Product Details

Immunogen:	Recombinant protein encompassing a sequence within the C-terminus region of human STAT2. The exact sequence is proprietary.
Isotype:	IgG
Specificity:	IP/MS validation was supported by references (PMID:30377386)
Cross-Reactivity:	Human, Mouse
Characteristics:	Rabbit Polyclonal antibody to STAT2 (signal transducer and activator of transcription 2, 113 kDa) STAT2 antibody [C2C3], C-term
Purification:	Purified by antigen-affinity chromatography.

## Target Details

Target:	STAT2
Alternative Name:	signal transducer and activator of transcription 2 ( <a href="#">STAT2 Products</a> )
Background:	<p>The protein encoded by this gene is a member of the STAT protein family. In response to cytokines and growth factors, STAT family members are phosphorylated by the receptor associated kinases, and then form homo- or heterodimers that translocate to the cell nucleus where they act as transcription activators. In response to interferon (IFN), this protein forms a complex with STAT1 and IFN regulatory factor family protein p48 (ISGF3G), in which this protein acts as a transactivator, but lacks the ability to bind DNA directly. Transcription adaptor P300/CBP (EP300/CREBBP) has been shown to interact specifically with this protein, which is thought to be involved in the process of blocking IFN-alpha response by adenovirus.</p> <p>Cellular Localization: Cytoplasm , Nucleus</p>
Molecular Weight:	98 kDa
Gene ID:	6773
UniProt:	<a href="#">P52630</a>
Pathways:	<a href="#">JAK-STAT Signaling</a> , <a href="#">Hepatitis C</a> , <a href="#">CXCR4-mediated Signaling Events</a>

## Application Details

Application Notes:	WB: 1:500-1:3000. IHC-P: 1:100-1:1000. IP: 1:100-1:500. Optimal dilutions/concentrations should be determined by the researcher. Not tested in other applications.
Comment:	Positive Control: Jurkat , Raji , K562 , THP-1 Validation: IP/MS, Orthogonal
Restrictions:	For Research Use only

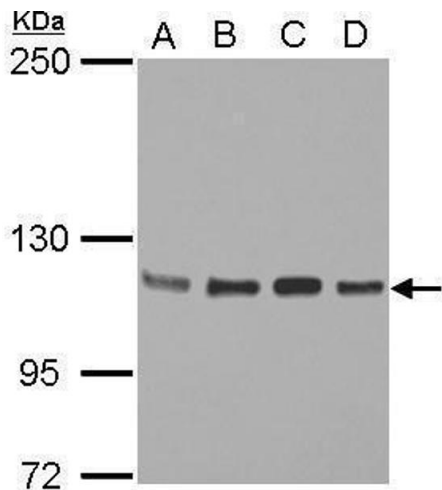
## Handling

Format:	Liquid
Concentration:	1 mg/mL
Buffer:	1XPBS ( pH 7), 1 % BSA, 20 % Glycerol, 0.01 % Thimerosal
Preservative:	Thimerosal (Merthiolate)
Precaution of Use:	This product contains Thimerosal (Merthiolate): a POISONOUS AND HAZARDOUS SUBSTANCE which should be handled by trained staff only.

Handling

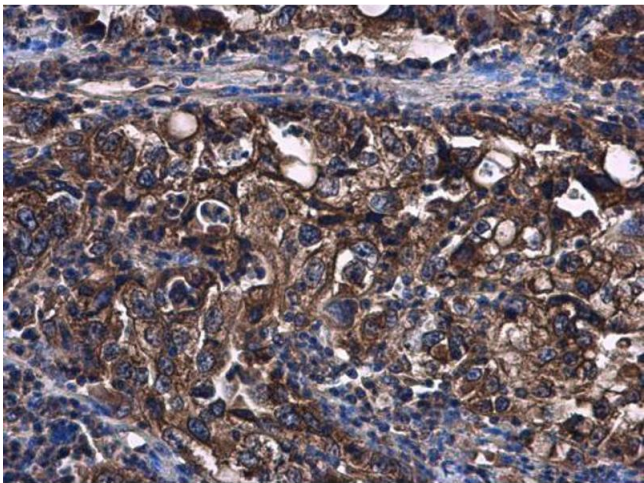
Storage:	4 °C,-20 °C
Storage Comment:	Store as concentrated solution. Centrifuge briefly prior to opening vial. For short-term storage (1-2 weeks), store at 4°C. For long-term storage, aliquot and store at -20°C or below. Avoid multiple freeze-thaw cycles.

Validation report #104394 for Cleavage Under Targets and Release Using Nuclease (CUT&RUN)



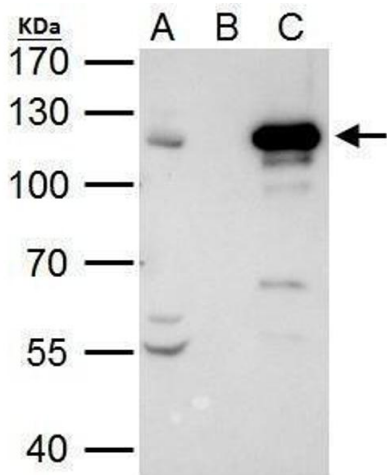
**Western Blotting**

**Image 1.** WB Image Sample (30 ug of whole cell lysate) A: Jurkat B: Raji C: K562 D: THP-1 5% SDS PAGE antibody diluted at 1:2000



**Immunohistochemistry**

**Image 2.** IHC-P Image STAT2 antibody [C2C3], C-term detects STAT2 protein at cytoplasm in human endometrial carcinoma by immunohistochemical analysis. Sample: Paraffin-embedded human endometrial carcinoma. STAT2 antibody [C2C3], C-term , diluted at 1:500.



**Immunoprecipitation**

**Image 3.** IP Image STAT2 antibody immunoprecipitates STAT2 protein in IP experiments. IP Sample: 293T whole cell lysate/extract A. 40 µg 293T whole cell lysate/extract B. Control with 2 µg of preimmune rabbit IgG C. Immunoprecipitation of STAT2 protein by 2 µg of STAT2 antibody , 7.5% SDS-PAGE The immunoprecipitated STAT2 protein was detected by STAT2 antibody , diluted at 1:1000. EasyBlot anti-rabbit IgG was used as a secondary reagent.

Please check the [product details page](#) for more images. Overall 4 images are available for ABIN2855558.