

Datasheet for ABIN2855559

**anti-MANBA antibody**[Go to Product page](#)**1** Image

## Overview

Quantity:	100 µL
Target:	MANBA
Reactivity:	Human
Host:	Rabbit
Clonality:	Polyclonal
Conjugate:	This MANBA antibody is un-conjugated
Application:	Western Blotting (WB)

## Product Details

Immunogen:	Recombinant protein encompassing a sequence within the center region of human MANBA. The exact sequence is proprietary.
Isotype:	IgG
Cross-Reactivity:	Human
Characteristics:	Rabbit polyclonal antibody to MANBA (mannosidase, beta A, lysosomal) MANBA antibody [N3C2], Internal
Purification:	Purified by antigen-affinity chromatography.

## Target Details

Target:	MANBA
Alternative Name:	mannosidase beta ( <a href="#">MANBA Products</a> )

## Target Details

**Background:** This gene encodes a member of the glycosyl hydrolase 2 family. The encoded protein localizes to the lysosome where it is the final exoglycosidase in the pathway for N-linked glycoprotein oligosaccharide catabolism. Mutations in this gene are associated with beta-mannosidosis, a lysosomal storage disease that has a wide spectrum of neurological involvement.

Cellular Localization: Lysosome

**Molecular Weight:** 101 kDa

**Gene ID:** 4126

**UniProt:** [O00462](#)

## Application Details

**Application Notes:** WB: 1:500-1:3000. Optimal dilutions/concentrations should be determined by the researcher.  
Not tested in other applications.

**Comment:** Positive Control: HepG2

**Restrictions:** For Research Use only

## Handling

**Format:** Liquid

**Concentration:** 1 mg/mL

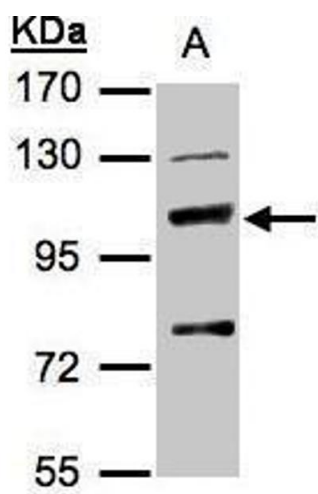
**Buffer:** 0.1M Tris-Glycine ( pH 7), 10 % Glycerol, 0.01 % Thimerosal

**Preservative:** Thimerosal (Merthiolate)

**Precaution of Use:** This product contains Thimerosal (Merthiolate): a POISONOUS AND HAZARDOUS SUBSTANCE which should be handled by trained staff only.

**Storage:** 4 °C,-20 °C

**Storage Comment:** Store as concentrated solution. Centrifuge briefly prior to opening vial. For short-term storage (1-2 weeks), store at 4°C. For long-term storage, aliquot and store at -20°C or below. Avoid multiple freeze-thaw cycles.



**Western Blotting**

**Image 1.** WB Image Sample(30 µg of whole cell lysate)  
A:Hep G2, 7.5% SDS PAGE antibody diluted at 1:500