



Datasheet for ABIN2855560
anti-BBOX1 antibody (Center)



[Go to Product page](#)

5 Images

Overview

Quantity:	100 µL
Target:	BBOX1
Binding Specificity:	Center
Reactivity:	Human, Mouse
Host:	Rabbit
Clonality:	Polyclonal
Conjugate:	This BBOX1 antibody is un-conjugated
Application:	Western Blotting (WB), Immunohistochemistry (Paraffin-embedded Sections) (IHC (p)), Immunofluorescence (IF), Immunocytochemistry (ICC)

Product Details

Immunogen:	Recombinant protein encompassing a sequence within the center region of human BBOX1. The exact sequence is proprietary.
Isotype:	IgG
Characteristics:	Rabbit Polyclonal antibody to BBOX1 (butyrobetaine (gamma), 2-oxoglutarate dioxygenase (gamma-butyrobetaine hydroxylase) 1) BBOX1 antibody
Purification:	Purified by antigen-affinity chromatography.

Target Details

Target:	BBOX1
---------	-------

Target Details

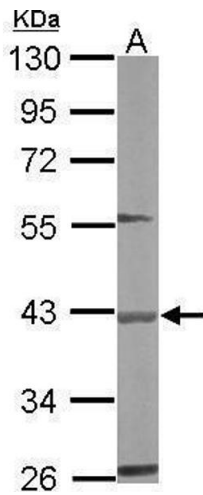
Alternative Name:	BBOX1 (BBOX1 Products)
Background:	<p>This gene encodes gamma butyrobetaine hydroxylase which catalyzes the formation of L-carnitine from gamma-butyrobetaine, the last step in the L-carnitine biosynthetic pathway. Carnitine is essential for the transport of activated fatty acids across the mitochondrial membrane during mitochondrial beta-oxidation.</p> <p>Cellular Localization: Cytoplasm</p>
Molecular Weight:	45 kDa
Gene ID:	8424

Application Details

Application Notes:	<p>Suggested dilution Reference ICC/IF 1:100-1:1000* IHC (Formalin-fixed paraffin-embedded sections) 1:100-1:1000* Western blot 1:500-1:3000* Not tested in other applications. *Optimal dilutions/concentrations should be determined by the researcher.Suggested dilutionReferenceICC/IF1:100-1:1000* IHC (Formalin-fixed paraffin-embedded sections)1:100-1:1000* Western blot1:500-1:3000*</p>
Comment:	Positive Control: Molt-4 , mouse liver
Restrictions:	For Research Use only

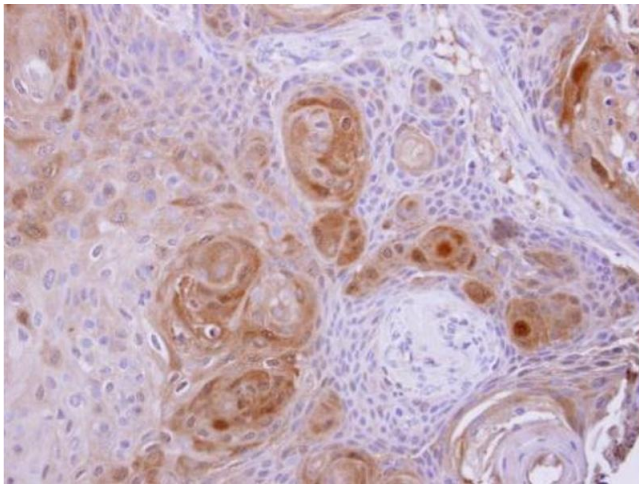
Handling

Format:	Liquid
Concentration:	0.76 mg/mL
Buffer:	0.1M Tris, 0.1M Glycine, 10 % Glycerol (pH 7). 0.01 % Thimerosal was added as a preservative.
Preservative:	Thimerosal (Merthiolate)
Precaution of Use:	This product contains Thimerosal (Merthiolate): a POISONOUS AND HAZARDOUS SUBSTANCE which should be handled by trained staff only.
Storage:	-20 °C
Storage Comment:	Keep as concentrated solution. Aliquot and store at -20°C or below. Avoid multiple freeze-thaw cycles.



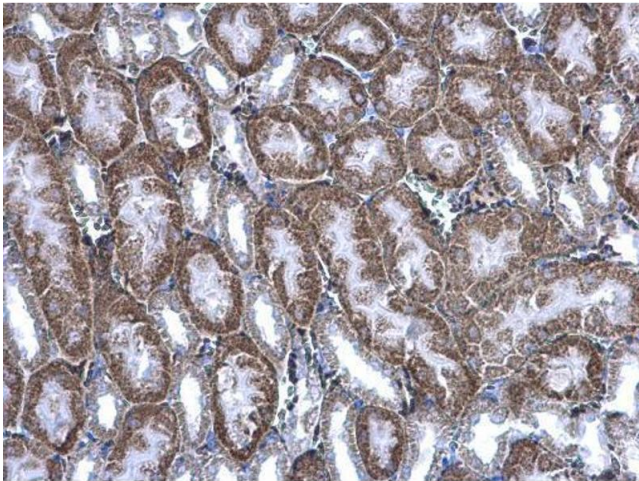
Western Blotting

Image 1. WB Image Sample (50 ug of whole cell lysate) A: mouse liver 10% SDS PAGE antibody diluted at 1:500



Immunohistochemistry

Image 2. IHC-P Image BBOX1 antibody detects BBOX1 protein at cytosol on Ca922 xenograft by immunohistochemical analysis. Sample: Paraffin-embedded Ca922 xenograft. BBOX1 antibody, dilution: 1:500.



Immunohistochemistry

Image 3. IHC-P Image BBOX1 antibody detects BBOX1 protein at cytoplasm on mouse kidney by immunohistochemical analysis. Sample: Paraffin-embedded mouse kidney. BBOX1 antibody, diluted at 1:500.

Please check the [product details page](#) for more images. Overall 5 images are available for ABIN2855560.