

Datasheet for ABIN2855561

anti-TJP2 antibody[Go to Product page](#)**1** Image

Overview

Quantity:	100 µL
Target:	TJP2
Reactivity:	Human
Host:	Rabbit
Clonality:	Polyclonal
Conjugate:	This TJP2 antibody is un-conjugated
Application:	Western Blotting (WB)

Product Details

Immunogen:	Recombinant protein encompassing a sequence within the center region of human TJP2. The exact sequence is proprietary.
Isotype:	IgG
Cross-Reactivity:	Human
Characteristics:	Rabbit Polyclonal antibody to TJP2 (tight junction protein 2 (zona occludens 2)) TJP2 antibody [N2N3]
Purification:	Purified by antigen-affinity chromatography.

Target Details

Target:	TJP2
Alternative Name:	tight junction protein 2 (TJP2 Products)

Target Details

Background: Tight junction proteins (TJPs) belong to a family of membrane-associated guanylate kinase (MAGUK) homologs that are involved in the organization of epithelial and endothelial intercellular junctions. TJPs bind to the cytoplasmic C termini of junctional transmembrane proteins and link them to the actin cytoskeleton.[supplied by OMIM]

Cellular Localization: Cell junction , adherens junction , Cell membrane, Peripheral membrane protein, Cytoplasmic side (By similarity) , tight junction (By similarity) , Nucleus (By similarity)

Molecular Weight: 134 kDa

Gene ID: 9414

UniProt: [Q9UDY2](#)

Application Details

Application Notes: WB: 1:500-1:3000. Optimal dilutions/concentrations should be determined by the researcher.
Not tested in other applications.

Comment: Positive Control: U87-MG

Restrictions: For Research Use only

Handling

Format: Liquid

Concentration: 1 mg/mL

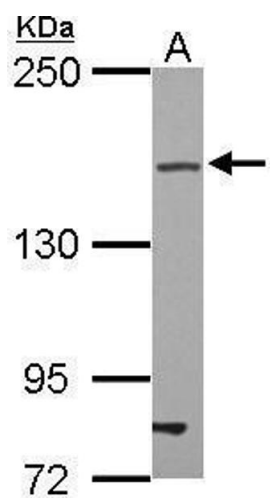
Buffer: 1XPBS (pH 7), 1 % BSA, 20 % Glycerol, 0.01 % Thimerosal

Preservative: Thimerosal (Merthiolate)

Precaution of Use: This product contains Thimerosal (Merthiolate): a POISONOUS AND HAZARDOUS SUBSTANCE which should be handled by trained staff only.

Storage: 4 °C, -20 °C

Storage Comment: Store as concentrated solution. Centrifuge briefly prior to opening vial. For short-term storage (1-2 weeks), store at 4°C. For long-term storage, aliquot and store at -20°C or below. Avoid multiple freeze-thaw cycles.



Western Blotting

Image 1. WB Image Sample (30 ug of whole cell lysate) A:
U87-MG 5% SDS PAGE antibody diluted at 1:500