

Datasheet for ABIN2855562

anti-IFIH1 antibody**2** Images[Go to Product page](#)

Overview

Quantity:	100 µL
Target:	IFIH1
Reactivity:	Human
Host:	Rabbit
Clonality:	Polyclonal
Conjugate:	This IFIH1 antibody is un-conjugated
Application:	Western Blotting (WB), Immunohistochemistry (Paraffin-embedded Sections) (IHC (p))

Product Details

Immunogen:	Recombinant protein encompassing a sequence within the center region of human MDA5. The exact sequence is proprietary.
Isotype:	IgG
Cross-Reactivity:	Human
Characteristics:	Rabbit Polyclonal antibody to MDA5 (interferon induced with helicase C domain 1) MDA5 antibody [N2C1], Internal
Purification:	Purified by antigen-affinity chromatography.

Target Details

Target:	IFIH1
Alternative Name:	interferon induced with helicase C domain 1 (IFIH1 Products)

Target Details

Background: DEAD box proteins, characterized by the conserved motif Asp-Glu-Ala-Asp (DEAD), are putative RNA helicases. They are implicated in a number of cellular processes involving alteration of RNA secondary structure such as translation initiation, nuclear and mitochondrial splicing, and ribosome and spliceosome assembly. Based on their distribution patterns, some members of this family are believed to be involved in embryogenesis, spermatogenesis, and cellular growth and division. This gene encodes a DEAD box protein that is upregulated in response to treatment with beta-interferon (IFNB) and a protein kinase C-activating compound, mezerein (MEZ). Irreversible reprogramming of melanomas can be achieved by treatment with both these agents, treatment with either agent alone only achieves reversible differentiation.

Cellular Localization: Cytoplasm , Nucleus (Potential)

Molecular Weight: 117 kDa

Gene ID: 64135

UniProt: [Q9BYX4](#)

Pathways: [Activation of Innate immune Response](#)

Application Details

Application Notes: WB: 1:500-1:3000. IHC-P: 1:100-1:1000. Optimal dilutions/concentrations should be determined by the researcher. Not tested in other applications.

Comment: Positive Control: THP-1 (100 ng/ml PMA treatment for 16 hr and 1000 ng/ml LPS treatment for 24 hr)
Validation: Orthogonal

Restrictions: For Research Use only

Handling

Format: Liquid

Concentration: 1 mg/mL

Buffer: 1XPBS (pH 7), 1 % BSA, 20 % Glycerol, 0.01 % Thimerosal

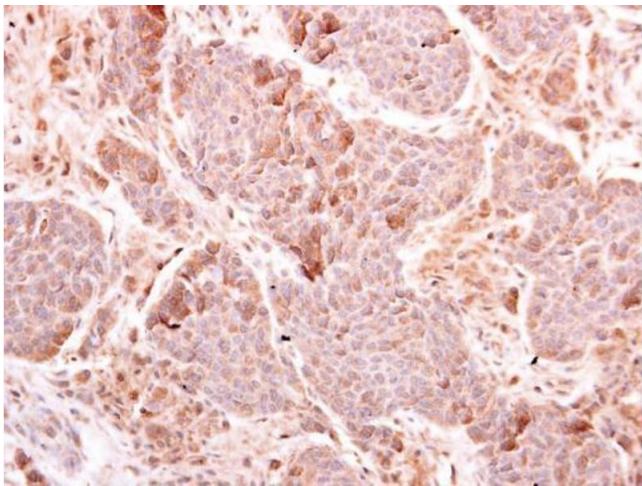
Preservative: Thimerosal (Merthiolate)

Precaution of Use: This product contains Thimerosal (Merthiolate): a POISONOUS AND HAZARDOUS SUBSTANCE which should be handled by trained staff only.

Handling

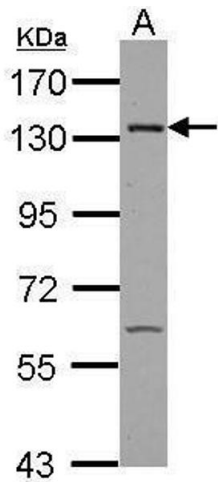
Storage:	4 °C,-20 °C
Storage Comment:	Store as concentrated solution. Centrifuge briefly prior to opening vial. For short-term storage (1-2 weeks), store at 4°C. For long-term storage, aliquot and store at -20°C or below. Avoid multiple freeze-thaw cycles.

Validation report #104394 for Cleavage Under Targets and Release Using Nuclease (CUT&RUN)



Immunohistochemistry

Image 1. IHC-P Image MDA5 antibody [N2C1], Internal detects MDA5 protein at cytoplasm on human breast carcinoma by immunohistochemical analysis. Sample: Paraffin-embedded human breast carcinoma. MDA5 antibody [N2C1], Internal , diluted at 1:500.



Western Blotting

Image 2. WB Image Sample (30 ug of whole cell lysate) A: Raji 7.5% SDS PAGE antibody diluted at 1:1000