

Datasheet for ABIN2855567

anti-LIG3 antibody

3 Images

[Go to Product page](#)

Overview

Quantity:	100 µL
Target:	LIG3
Reactivity:	Human
Host:	Rabbit
Clonality:	Polyclonal
Conjugate:	This LIG3 antibody is un-conjugated
Application:	Western Blotting (WB), Immunofluorescence (IF), Immunocytochemistry (ICC), Immunohistochemistry (Paraffin-embedded Sections) (IHC (p))

Product Details

Immunogen:	Recombinant protein encompassing a sequence within the center region of human DNA ligase III. The exact sequence is proprietary.
Isotype:	IgG
Cross-Reactivity:	Human, Mouse
Characteristics:	Rabbit Polyclonal antibody to DNA ligase III (ligase III, DNA, ATP-dependent) DNA ligase III antibody
Purification:	Purified by antigen-affinity chromatography.
Grade:	KO Validated

Target Details

Target:	LIG3
---------	------

Target Details

Alternative Name:	DNA ligase 3 (LIG3 Products)
Background:	<p>This gene is a member of the DNA ligase family. Each member of this family encodes a protein that catalyzes the joining of DNA ends but they each have a distinct role in DNA metabolism.</p> <p>The protein encoded by this gene is involved in excision repair and is located in both the mitochondria and nucleus, with translation initiation from the upstream start codon allowing for transport to the mitochondria and translation initiation from a downstream start codon allowing for transport to the nucleus. Additionally, alternate transcriptional splice variants, encoding different isoforms, have been characterized.</p> <p>Cellular Localization: Nucleus</p>
Molecular Weight:	113 kDa
Gene ID:	3980
UniProt:	P49916
Pathways:	DNA Damage Repair

Application Details

Application Notes:	WB: 1:500-1:3000. ICC/IF: 1:100-1:1000. IHC-P: 1:100-1:1000. Optimal dilutions/concentrations should be determined by the researcher. Not tested in other applications.
Comment:	<p>Positive Control: 293T , A431 , HeLa , HepG2</p> <p>Validation: KO/KD, Orthogonal</p>
Restrictions:	For Research Use only

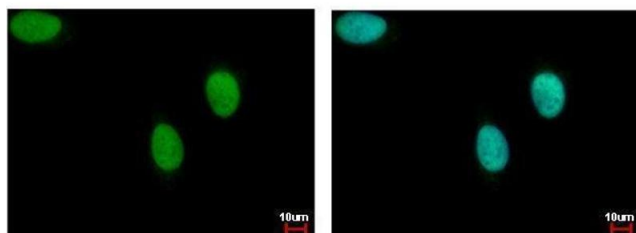
Handling

Format:	Liquid
Concentration:	0.81 mg/mL
Buffer:	1XPBS (pH 7), 20 % Glycerol, 0.025 % ProClin 300
Preservative:	ProClin
Precaution of Use:	This product contains ProClin: a POISONOUS AND HAZARDOUS SUBSTANCE which should be handled by trained staff only.
Storage:	4 °C,-20 °C

Handling

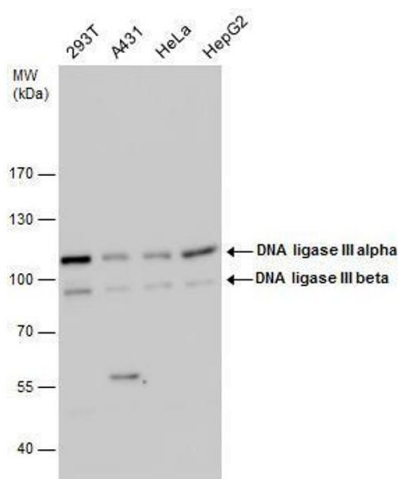
Storage Comment: Store as concentrated solution. Centrifuge briefly prior to opening vial. For short-term storage (1-2 weeks), store at 4°C. For long-term storage, aliquot and store at -20°C or below. Avoid multiple freeze-thaw cycles.

Validation report #103867 for Immunohistochemistry (IHC)



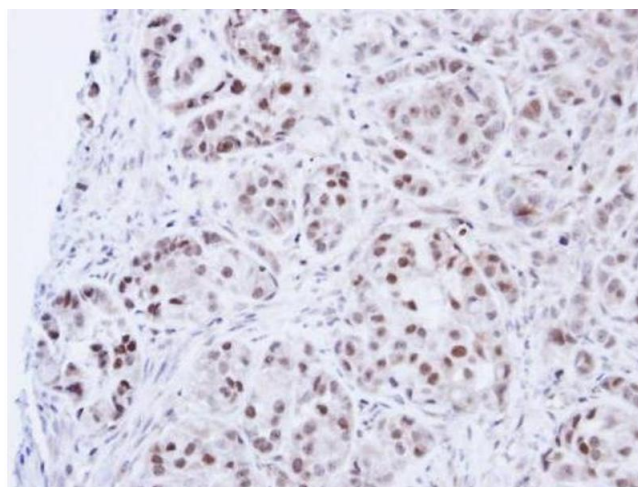
Immunofluorescence

Image 1. ICC/IF Image DNA ligase III antibody detects LIG3 protein at nucleus by immunofluorescent analysis. Sample: HeLa cells were fixed in 4% paraformaldehyde at RT for 15 min. Green: LIG3 protein stained by DNA ligase III antibody , diluted at 1:500. Blue: Hoechst 33342 staining.



Western Blotting

Image 2. WB Image DNA ligase III antibody detects DNA ligase III protein by western blot analysis. Various whole cell extracts (30 µg) were separated by 7.5% SDS-PAGE, and the membrane was blotted with DNA ligase III antibody , diluted by 1:1000.



Immunohistochemistry

Image 3. IHC-P Image Immunohistochemical analysis of paraffin-embedded A549 Xenograft, using DNA ligase 3, antibody at 1:100 dilution.