

Datasheet for ABIN2855569

anti-NRF1 antibody

8 Images

2 Publications

[Go to Product page](#)

Overview

Quantity:	100 µL
Target:	NRF1
Reactivity:	Human
Host:	Rabbit
Clonality:	Polyclonal
Conjugate:	This NRF1 antibody is un-conjugated
Application:	Western Blotting (WB), Immunohistochemistry (Paraffin-embedded Sections) (IHC (p)), Immunofluorescence (IF), Immunocytochemistry (ICC), Immunoprecipitation (IP)

Product Details

Immunogen:	Recombinant protein encompassing a sequence within the center region of human NRF1. The exact sequence is proprietary.
Isotype:	IgG
Cross-Reactivity:	Human, Mouse, Rat
Characteristics:	Rabbit Polyclonal antibody to NRF1 (nuclear respiratory factor 1) NRF1 antibody
Purification:	Purified by antigen-affinity chromatography.

Target Details

Target:	NRF1
Alternative Name:	nuclear respiratory factor 1 (NRF1 Products)

Target Details

Background:	<p>This gene encodes a protein that homodimerizes and functions as a transcription factor which activates the expression of some key metabolic genes regulating cellular growth and nuclear genes required for respiration, heme biosynthesis, and mitochondrial DNA transcription and replication. The protein has also been associated with the regulation of neurite outgrowth. Alternate transcriptional splice variants, which encode the same protein, have been characterized. Additional variants encoding different protein isoforms have been described but they have not been fully characterized. Confusion has occurred in bibliographic databases due to the shared symbol of NRF1 for this gene and for "nuclear factor (erythroid-derived 2)-like 1" which has an official symbol of NFE2L1.</p> <p>Cellular Localization: Nucleus</p>
Molecular Weight:	54 kDa
Gene ID:	4899
UniProt:	Q16656
Pathways:	Regulation of Lipid Metabolism by PPARalpha

Application Details

Application Notes:	WB: 1:500-1:3000. ICC/IF: 1:100-1:1000. IHC-P: 1:100-1:1000. IP: 1:100-1:500. Optimal dilutions/concentrations should be determined by the researcher. Not tested in other applications.
Comment:	Positive Control: 293T nuclear , A431 nuclear , HeLa nuclear , HepG2 nuclear Validation: Orthogonal
Restrictions:	For Research Use only

Handling

Format:	Liquid
Concentration:	1.32 mg/mL
Buffer:	1XPBS pH 7, 20 % Glycerol, 0.025 % ProClin 300
Preservative:	ProClin
Precaution of Use:	This product contains ProClin: a POISONOUS AND HAZARDOUS SUBSTANCE which should be handled by trained staff only.

Handling

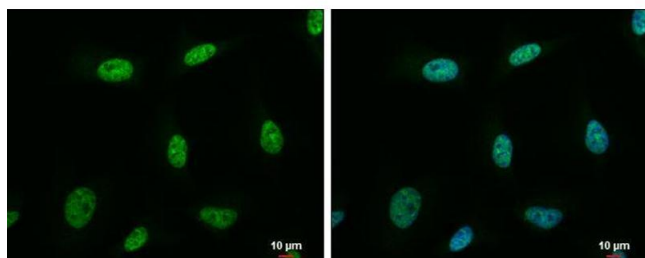
Storage: 4 °C, -20 °C

Storage Comment: Store as concentrated solution. Centrifuge briefly prior to opening vial. For short-term storage (1-2 weeks), store at 4°C. For long-term storage, aliquot and store at -20°C or below. Avoid multiple freeze-thaw cycles.

Publications

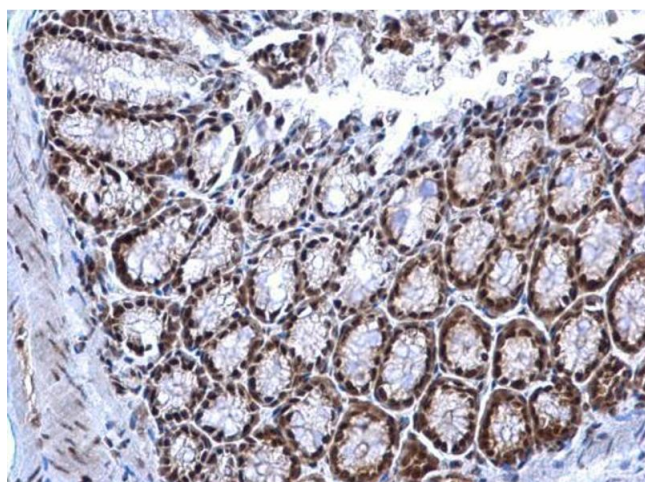
Product cited in: Chao, Wroblewski, Ilkayeva, Stevens, Bain, Meyer, Schenk, Martinez, Vergnes, Narkar, Drew, Hong, Boyadjian, Hevener, Evans, Reue, Spencer, Newgard, Tontonoz: "Skeletal muscle Nur77 expression enhances oxidative metabolism and substrate utilization." in: **Journal of lipid research**, Vol. 53, Issue 12, pp. 2610-9, (2012) ([PubMed](#)).

Images



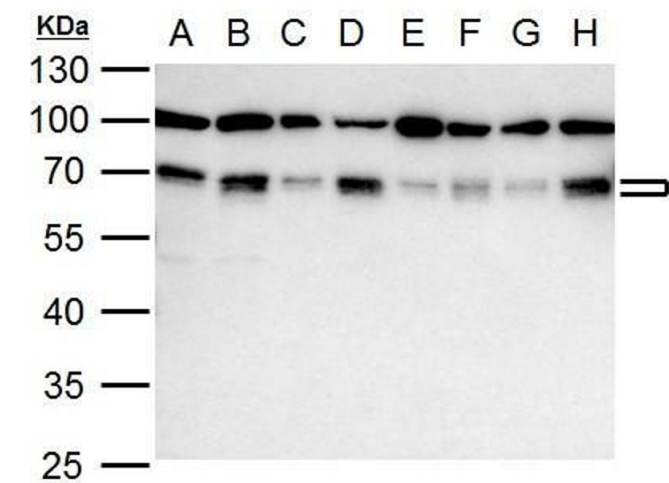
Immunofluorescence

Image 1. ICC/IF Image NRF1 antibody detects NRF1 protein at nucleus by immunofluorescent analysis. Sample: HeLa cells were fixed in 4% paraformaldehyde at RT for 15 min. Green: NRF1 protein stained by NRF1 antibody , diluted at 1:500. Blue: Hoechst 33342 staining. Scale bar = 10 μm.



Immunohistochemistry

Image 2. IHC-P Image NRF1 antibody detects NRF1 protein at nucleus on mouse colon by immunohistochemical analysis. Sample: Paraffin-embedded mouse colon. NRF1 antibody , dilution: 1:500.



Western Blotting

Image 3. WB Image NRF1 antibody detects NRF1 protein by western blot analysis. A. 30 µg 293T whole cell lysate/extract B. 30 µg 293T nuclear lysate/extract C. 30 µg A431 whole cell lysate/extract | D. 30 µg A431 nuclear lysate/extract E. 30 µg HeLa whole cell lysate/extract F. 30 µg HeLa nuclear lysate/extract G. 30 µg HepG2 whole cell lysate/extract H. 30 µg HepG2 nuclear lysate/extract 10 % SDS-PAGE NRF1 antibody , dilution: 1:1000

Please check the [product details page](#) for more images. Overall 8 images are available for ABIN2855569.