

Datasheet for ABIN2855570

**anti-Nth Endonuclease III-Like 1 (NTHL1) (Center) antibody**[Go to Product page](#)**1** Image

## Overview

Quantity:	100 µL
Target:	Nth Endonuclease III-Like 1 (NTHL1)
Binding Specificity:	Center
Reactivity:	Human
Host:	Rabbit
Clonality:	Polyclonal
Conjugate:	Un-conjugated
Application:	Immunofluorescence (IF), Immunocytochemistry (ICC)

## Product Details

Immunogen:	Recombinant protein encompassing a sequence within the center region of human NTH1. The exact sequence is proprietary.
Isotype:	IgG
Characteristics:	Rabbit Polyclonal antibody to NTH1 (nth endonuclease III-like 1 (E. coli)) NTH1 antibody
Purification:	Purified by antigen-affinity chromatography.

## Target Details

Target:	Nth Endonuclease III-Like 1 (NTHL1)
Alternative Name:	NTH1 ( <a href="#">NTHL1 Products</a> )

## Target Details

**Background:** The protein encoded by this gene is a DNA N-glycosylase of the endonuclease III family. Like a similar protein in *E. coli*, the encoded protein has DNA glycosylase activity on DNA substrates containing oxidized pyrimidine residues and has apurinic/apyrimidinic lyase activity.

Cellular Localization: Nucleus

**Molecular Weight:** 34 kDa

**Gene ID:** 4913

## Application Details

**Application Notes:** Suggested dilution Reference ICC/IF 1:100-1:1000\* Not tested in other applications. \*Optimal dilutions/concentrations should be determined by the researcher. Suggested dilution Reference ICC/IF 1:100-1:1000\*

**Restrictions:** For Research Use only

## Handling

**Format:** Liquid

**Concentration:** 0.78 mg/mL

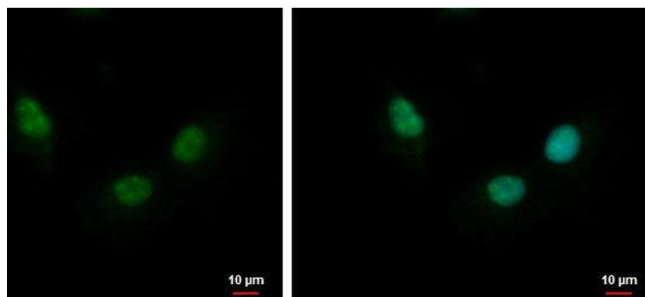
**Buffer:** 0.1M Tris, 0.1M Glycine, 20 % Glycerol ( pH 7). 0.17 % Thimerosal was added as a preservative.

**Preservative:** Thimerosal (Merthiolate)

**Precaution of Use:** This product contains Thimerosal (Merthiolate): a POISONOUS AND HAZARDOUS SUBSTANCE which should be handled by trained staff only.

**Storage:** -20 °C

**Storage Comment:** Keep as concentrated solution. Aliquot and store at -20°C or below. Avoid multiple freeze-thaw cycles.



#### Immunofluorescence

**Image 1.** ICC/IF Image NTH1 antibody detects NTH1 protein at nucleus by immunofluorescent analysis. Sample: A549 cells were fixed in 4% paraformaldehyde at RT for 15 min. Green: NTH1 protein stained by NTH1 antibody , diluted at 1:1000. Blue: Hoechst 33342 staining.