

Datasheet for ABIN2855572

anti-RANBP1 antibody

3 Images

1 Publication

[Go to Product page](#)

Overview

Quantity:	100 µL
Target:	RANBP1
Reactivity:	Human
Host:	Rabbit
Clonality:	Polyclonal
Conjugate:	This RANBP1 antibody is un-conjugated
Application:	Western Blotting (WB), Immunofluorescence (IF), Immunocytochemistry (ICC)

Product Details

Immunogen:	Recombinant protein encompassing a sequence within the center region of human RanBP1. The exact sequence is proprietary.
Isotype:	IgG
Cross-Reactivity:	Human, Mouse
Characteristics:	Rabbit Polyclonal antibody to Ran BP1 (RAN binding protein 1) Ran BP1 antibody [N1C3]
Purification:	Purified by antigen-affinity chromatography.
Grade:	KO Validated

Target Details

Target:	RANBP1
---------	--------

Target Details

Alternative Name:	RAN binding protein 1 (RANBP1 Products)
Background:	Ran/TC4-binding protein, RanBP1, interacts specifically with GTP-charged RAN. RANBP1 encodes a 23-kD protein that binds to RAN complexed with GTP but not GDP. RANBP1 does not activate GTPase activity of RAN but does markedly increase GTP hydrolysis by the RanGTPase-activating protein (RanGAP1). The RANBP1 cDNA encodes a 201-amino acid protein that is 92 % similar to its mouse homolog. In both mammalian cells and in yeast, RANBP1 acts as a negative regulator of RCC1 by inhibiting RCC1-stimulated guanine nucleotide release from RAN.
Molecular Weight:	23 kDa
Gene ID:	5902
UniProt:	P43487

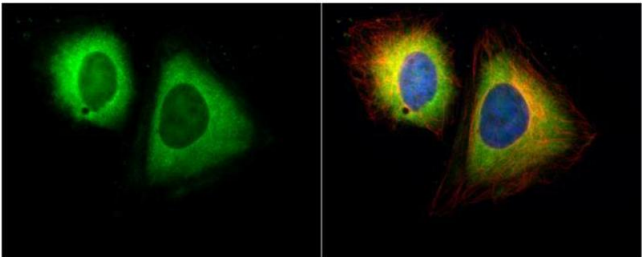
Application Details

Application Notes:	WB: 1:500-1:3000. ICC/IF: 1:100-1:1000. Optimal dilutions/concentrations should be determined by the researcher. Not tested in other applications.
Comment:	Positive Control: Mouse brain , HeLaS3 , 293T Validation: KO/KD
Restrictions:	For Research Use only

Handling

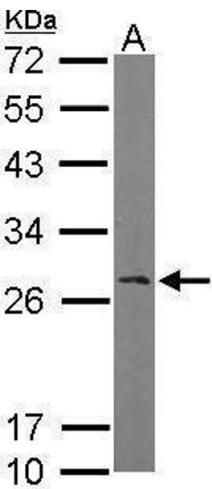
Format:	Liquid
Concentration:	1 mg/mL
Buffer:	0.1M Tris-Glycine (pH 7), 10 % Glycerol, 0.01 % Thimerosal
Preservative:	Thimerosal (Merthiolate)
Precaution of Use:	This product contains Thimerosal (Merthiolate): a POISONOUS AND HAZARDOUS SUBSTANCE which should be handled by trained staff only.
Storage:	4 °C, -20 °C
Storage Comment:	Store as concentrated solution. Centrifuge briefly prior to opening vial. For short-term storage (1-2 weeks), store at 4°C. For long-term storage, aliquot and store at -20°C or below. Avoid multiple freeze-thaw cycles.

Product cited in: Kitano, Kino, Yamamoto, Takitani, Miyoshi, Ishida, Saito, Arima, Satoh: "Bioinformatics Data Mining Approach Suggests Coexpression of AGTPBP1 with an ALS-linked Gene C9orf72." in: **Journal of central nervous system disease**, Vol. 7, pp. 15-26, (2015) ([PubMed](#)).



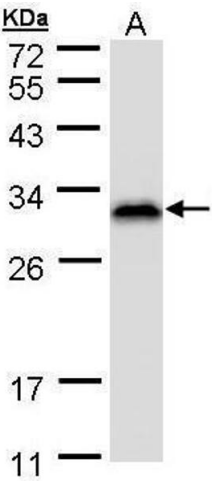
Immunofluorescence

Image 1. ICC/IF Image Ran BP1 antibody [N1C3] detects Ran BP1 protein at cytoplasm by immunofluorescent analysis. Sample: HeLa cells were fixed in 4% paraformaldehyde at RT for 15 min. Green: Ran BP1 protein stained by Ran BP1 antibody [N1C3] , diluted at 1:500. Red: alpha Tubulin, a cytoskeleton marker, stained by alpha Tubulin antibody [B-5-1-2] , diluted at 1:10000. Blue: Hoechst 33342 staining.



Western Blotting

Image 2. WB Image Sample (50 ug of whole cell lysate) A: Mouse brain 12% SDS PAGE antibody diluted at 1:1000



Western Blotting

Image 3. WB Image Sample (30 ug of whole cell lysate) A: HeLa S3 , 12% SDS PAGE antibody diluted at 1:1000