

Datasheet for ABIN2855573

**anti-RRM2 antibody (Regulatory Subunit)****3** Images**1** Publication[Go to Product page](#)

## Overview

Quantity:	100 µL
Target:	RRM2
Binding Specificity:	Regulatory Subunit
Reactivity:	Human
Host:	Rabbit
Clonality:	Polyclonal
Conjugate:	This RRM2 antibody is un-conjugated
Application:	Western Blotting (WB), Immunofluorescence (IF), Immunohistochemistry (Paraffin-embedded Sections) (IHC (p)), Immunocytochemistry (ICC)

## Product Details

Immunogen:	Recombinant protein encompassing a sequence within the center region of human RRM2. The exact sequence is proprietary.
Isotype:	IgG
Cross-Reactivity:	Human, Mouse, Rat, Zebrafish (Danio rerio)
Characteristics:	Rabbit Polyclonal antibody to RRM2 (ribonucleotide reductase M2) RRM2 antibody [N1C1]
Purification:	Purified by antigen-affinity chromatography.
Grade:	KO Validated

## Target Details

Target:	RRM2
Alternative Name:	ribonucleotide reductase M2 ( <a href="#">RRM2 Products</a> )
Background:	<p>This gene encodes one of two non-identical subunits for ribonucleotide reductase. This reductase catalyzes the formation of deoxyribonucleotides from ribonucleotides. Synthesis of the encoded protein (M2) is regulated in a cell-cycle dependent fashion.</p> <p>Cellular Localization: Cytoplasm</p>
Molecular Weight:	45 kDa
Gene ID:	6241
UniProt:	<a href="#">P31350</a>
Pathways:	<a href="#">Mitotic G1-G1/S Phases</a>

## Application Details

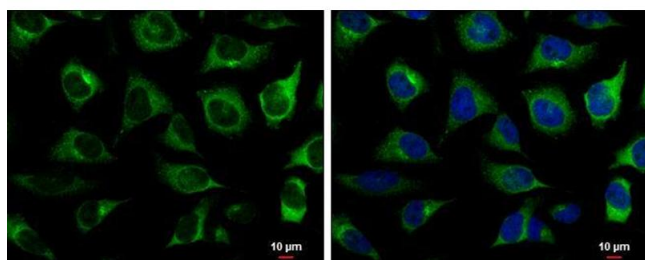
Application Notes:	ICC/IF: 1:100-1:1000. IHC-P: 1:100-1:1000. Optimal dilutions/concentrations should be determined by the researcher. Not tested in other applications.
Comment:	Validatio: KO/KD, Orthogonal
Restrictions:	For Research Use only

## Handling

Format:	Liquid
Concentration:	1.18 mg/mL
Buffer:	1XPBS ( pH 7), 20 % Glycerol, 0.025 % ProClin 300
Preservative:	ProClin
Precaution of Use:	This product contains ProClin: a POISONOUS AND HAZARDOUS SUBSTANCE which should be handled by trained staff only.
Storage:	4 °C,-20 °C
Storage Comment:	Store as concentrated solution. Centrifuge briefly prior to opening vial. For short-term storage (1-2 weeks), store at 4°C. For long-term storage, aliquot and store at -20°C or below. Avoid multiple freeze-thaw cycles.

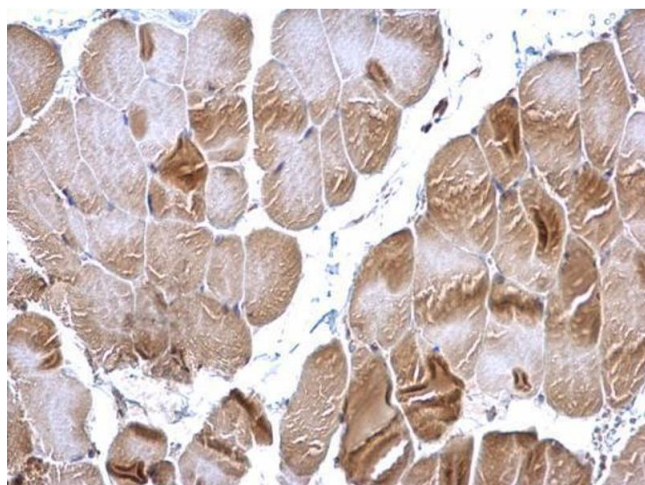
Product cited in: Piquet, Le Parc, Bai, Chevallier, Adam, Polo: "The Histone Chaperone FACT Coordinates H2A.X-Dependent Signaling and Repair of DNA Damage." in: **Molecular cell**, Vol. 72, Issue 5, pp. 888-901.e7, (2018) ([PubMed](#)).

### Validation report #104383 for Cleavage Under Targets and Release Using Nuclease (CUT&RUN)



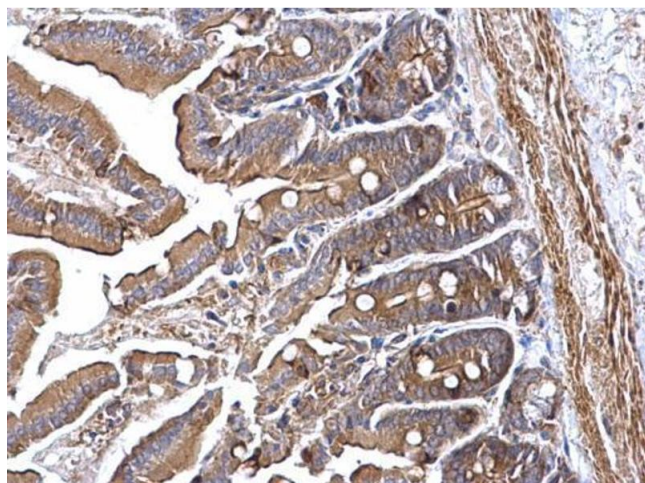
#### Immunofluorescence

**Image 1.** ICC/IF Image RRM2 antibody [N1C1] detects RRM2 protein at cytoplasm by immunofluorescent analysis. Sample: HeLa cells were fixed in 4% paraformaldehyde at RT for 15 min. Green: RRM2 protein stained by RRM2 antibody [N1C1] , diluted at 1:500. Blue: Hoechst 33342 staining. Scale bar = 10 µm.



#### Immunohistochemistry

**Image 2.** IHC-P Image RRM2 antibody [N1C1] detects RRM2 protein at cytoplasm on mouse muscle by immunohistochemical analysis. Sample: Paraffin-embedded mouse muscle. RRM2 antibody [N1C1] , diluted at 1:500.



#### Immunohistochemistry

**Image 3.** IHC-P Image RRM2 antibody [N1C1] detects RRM2 protein at cytoplasm on mouse intestine by immunohistochemical analysis. Sample: Paraffin-embedded mouse intestine. RRM2 antibody [N1C1] , diluted at 1:500.