

Datasheet for ABIN2855574
anti-SERPINB2 antibody (Center)

6 Images

[Go to Product page](#)

Overview

Quantity:	100 µL
Target:	SERPINB2
Binding Specificity:	Center
Reactivity:	Human, Mouse
Host:	Rabbit
Clonality:	Polyclonal
Conjugate:	This SERPINB2 antibody is un-conjugated
Application:	Western Blotting (WB), Immunoprecipitation (IP), Immunohistochemistry (Paraffin-embedded Sections) (IHC (p)), Immunocytochemistry (ICC), Immunofluorescence (IF)

Product Details

Immunogen:	Recombinant protein encompassing a sequence within the center region of human PAI2. The exact sequence is proprietary.
Isotype:	IgG
Characteristics:	Rabbit Polyclonal antibody to PAI2 (serpin peptidase inhibitor, clade B (ovalbumin), member 2) PAI2 antibody
Purification:	Purified by antigen-affinity chromatography.

Target Details

Target:	SERPINB2
Alternative Name:	PAI2 (SERPINB2 Products)

Target Details

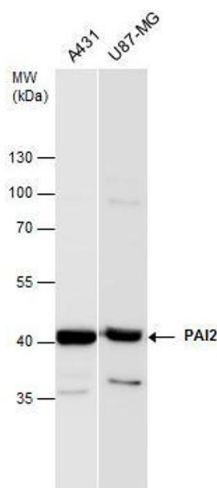
Target Type:	Amino Acid
Background:	Inhibits urokinase-type plasminogen activator. The monocyte derived PAI-2 is distinct from the endothelial cell-derived PAI-1. Cellular Localization: Cytoplasm , Secreted , extracellular space
Molecular Weight:	47 kDa
Gene ID:	5055
Pathways:	Autophagy

Application Details

Application Notes:	Suggested dilution Reference ICC/IF 1:100-1:1000* IHC (Formalin-fixed paraffin-embedded sections) 1:100-1:1000* Immunoprecipitation 1:100-1:500* Western blot 1:500-1:20000* Not tested in other applications. *Optimal dilutions/concentrations should be determined by the researcher.Suggested dilutionReferenceICC/IF1:100-1:1000* IHC (Formalin-fixed paraffin-embedded sections)1:100-1:1000* Immunoprecipitation1:100-1:500* Western blot1:500-1:20000*
Comment:	Positive Control: A431 , JC , U87-MG
Restrictions:	For Research Use only

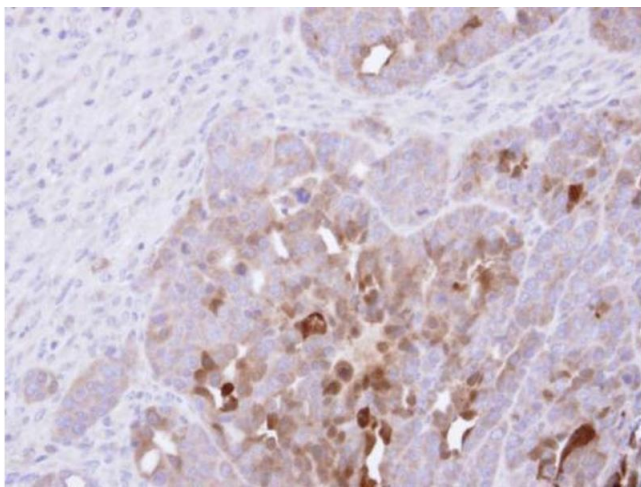
Handling

Format:	Liquid
Concentration:	0.39 mg/mL
Buffer:	1XPBS, 20 % Glycerol (pH 7). 0.025 % ProClin 300 was added as a preservative.
Preservative:	Thimerosal (Merthiolate)
Precaution of Use:	This product contains Thimerosal (Merthiolate): a POISONOUS AND HAZARDOUS SUBSTANCE which should be handled by trained staff only.
Storage:	-20 °C
Storage Comment:	Keep as concentrated solution. Aliquot and store at -20°C or below. Avoid multiple freeze-thaw cycles.



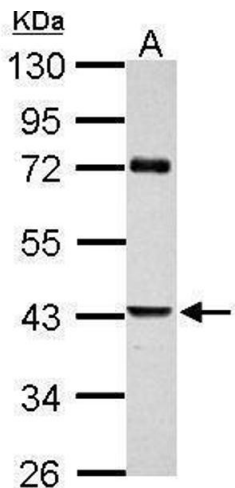
Western Blotting

Image 1. WB Image PAI2 antibody detects PAI2 protein by western blot analysis. Various whole cell extracts (30 µg) were separated by 10% SDS-PAGE, and the membrane was blotted with PAI2 antibody, diluted at a dilution of 1:1000.



Immunohistochemistry

Image 2. IHC-P Image Immunohistochemical analysis of paraffin-embedded NCIN87 xenograft, using PAI-2, antibody at 1:500 dilution.



Western Blotting

Image 3. WB Image Sample (30 ug of whole cell lysate) A: JC 10% SDS PAGE antibody diluted at 1:1000

Please check the [product details page](#) for more images. Overall 6 images are available for ABIN2855574.